

Port to REZ construction update

Construction commencing

August 2025

EnergyCo is commencing construction on the Port to REZ project, at the intersection of Golden Highway and Saxa Road, Elong Elong.

EnergyCo is delivering upgrades along the State Road network to enable the transportation of oversize over mass (OSOM) equipment needed to build renewable energy zones (REZs) across NSW. BMD Constructions will carry out the first stage of road upgrades, under the Port to REZ project, from the Port of Newcastle to the Central-West Orana REZ.

What are we doing?

From the end April 2025 for around 12 months, we will be working at multiple locations along the Port to REZ route.

Work will start at the intersection of **Golden Highway and Saxa Road, Elong Elong** from **Monday 1 September 2025**, and will include:

- Geotechnical investigations and surveying
- Vegetation pruning
- Laying new asphalt at the southeast corner of the intersection and the western verge of Saxa Road
- New road line marking and adjusting guideposts
- Extending the existing culvert approximately 2.4m on Saxa Road, and replacing a head wall

- Constructing a new vegetated open drain on the southeast corner of the intersection
- Removing and relocating signage
- Tightening electricity conductors between poles and replacing poles and conductors.

Work hours and timing

Standard daytime work hours are **7am and 6pm, Monday to Friday**, and **8am to 1pm, Saturdays**.

To ensure the safety of our crews and motorists, some nighttime work may also occur. **If required, nighttime hours will be from 6pm to 7am, Sunday to Thursday.**

Any affected residents will be contacted directly.

What will this mean for you?

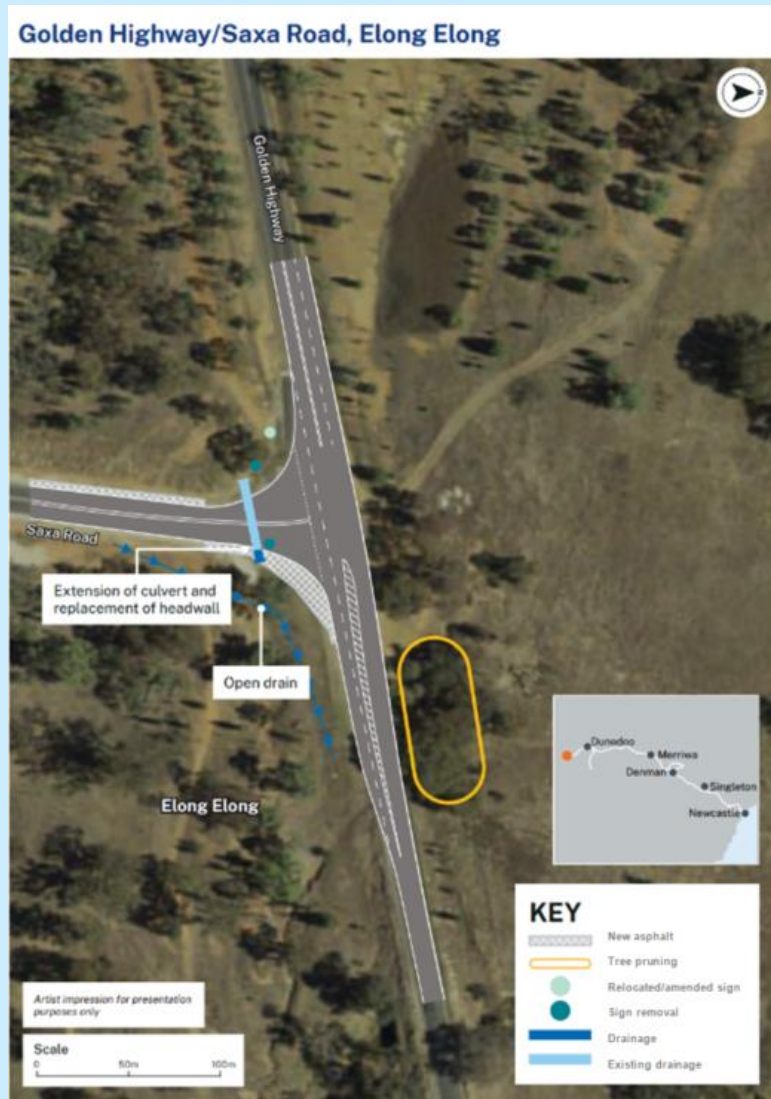
During the works there will be traffic control, temporary lane closures and machinery operating adjacent to, or on the road. Lane closures will vary as the works progress. Access for road users will be maintained.

Please take care, keep to the signposted speed limits and follow the direction of traffic controllers.

We will make every effort to minimise noise and vibration impacts by turning off equipment when not in use and monitoring noise.

Thank you for your patience during this important work.

Location of the work



Contact us

For more information, get in touch with our team:

📞 1800 807 561
(9am to 5pm, Monday to Friday)

✉ Port2REZCommunity@BMD.com.au

Visit our website to read our work notifications or view our interactive map:

🌐 www.energyco.nsw.gov.au/port2rez

📍 <https://caportal.com.au/energyco/rez>



If you need the Translating and Interpreting Service call 131 450 and ask them to call us on 1800 807 561.