

Central-West Orana Renewable Energy Zone Transmission project

Amendment Report

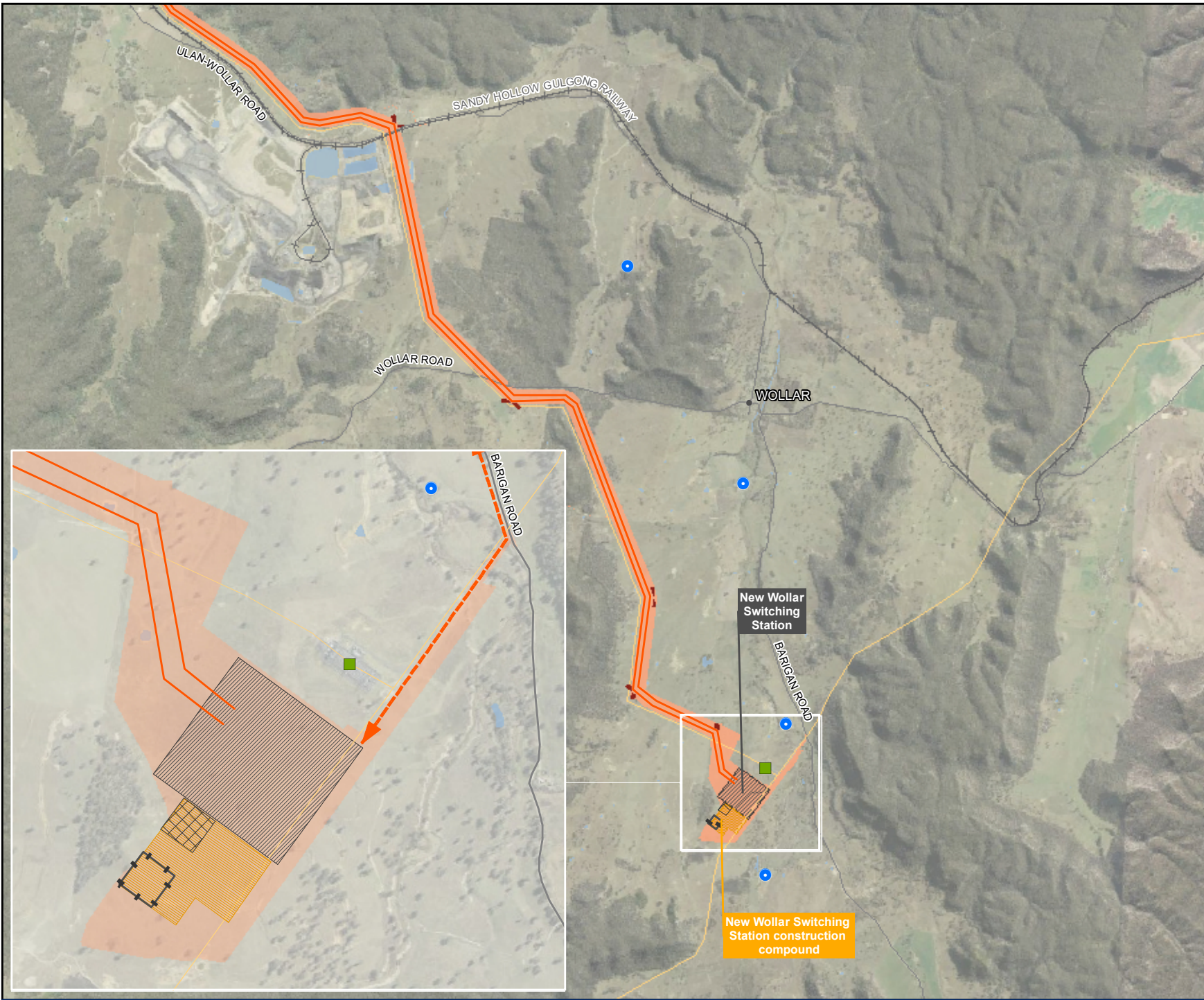
Appendix B: Updated project description mapping

March 2024

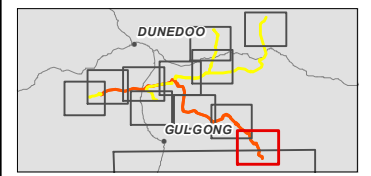
www.energyco.nsw.gov.au



Figure B-1
The project - construction features
Map 1 of 12



- Legend**
- Construction**
- Amended construction area
 - Construction compound
 - Brake and winch site
 - Helipad
 - Concrete batch plant
 - Access in/out
- Note: Location of construction features are indicative and would be confirmed during detailed design*
- Operation**
- Energy hub / 500 kV switching station
 - 500 kV transmission line
- Other features**
- Existing Transgrid Wollar Substation
 - Existing transmission line
 - Road
 - Railway
 - Water body
- Sensitive receivers**
- House



0 1 2 km
Coordinate system: GDA2020 MGA Zone 55
Scale ratio correct when printed at A4
1:80,000
Data sources: WSP, NSWSS, EnergyCo

Figure B-1
The project - construction features
Map 2 of 12



Legend

Construction

- Amended construction area
- Brake and winch site

Note: Location of construction features are indicative and would be confirmed during detailed design

Operation

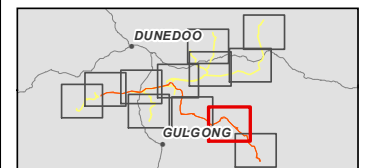
- 500 kV transmission line

Other features

- Existing transmission line
- Road
- Watercourse
- Water body

Sensitive receivers

- House
- School



0 1 2 km
Coordinate system: GDA2020 MGA Zone 55
Scale ratio correct when printed at A4



1:80,000
Data sources: WSP, NSWSS, EnergyCo

Figure B-1
The project - construction features
Map 3 of 12

Legend

Construction

- Amended construction area
- Brake and winch site

Note: Location of construction features are indicative and would be confirmed during detailed design

Operation

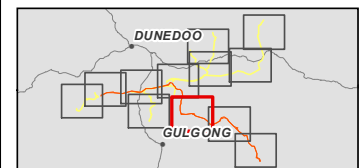
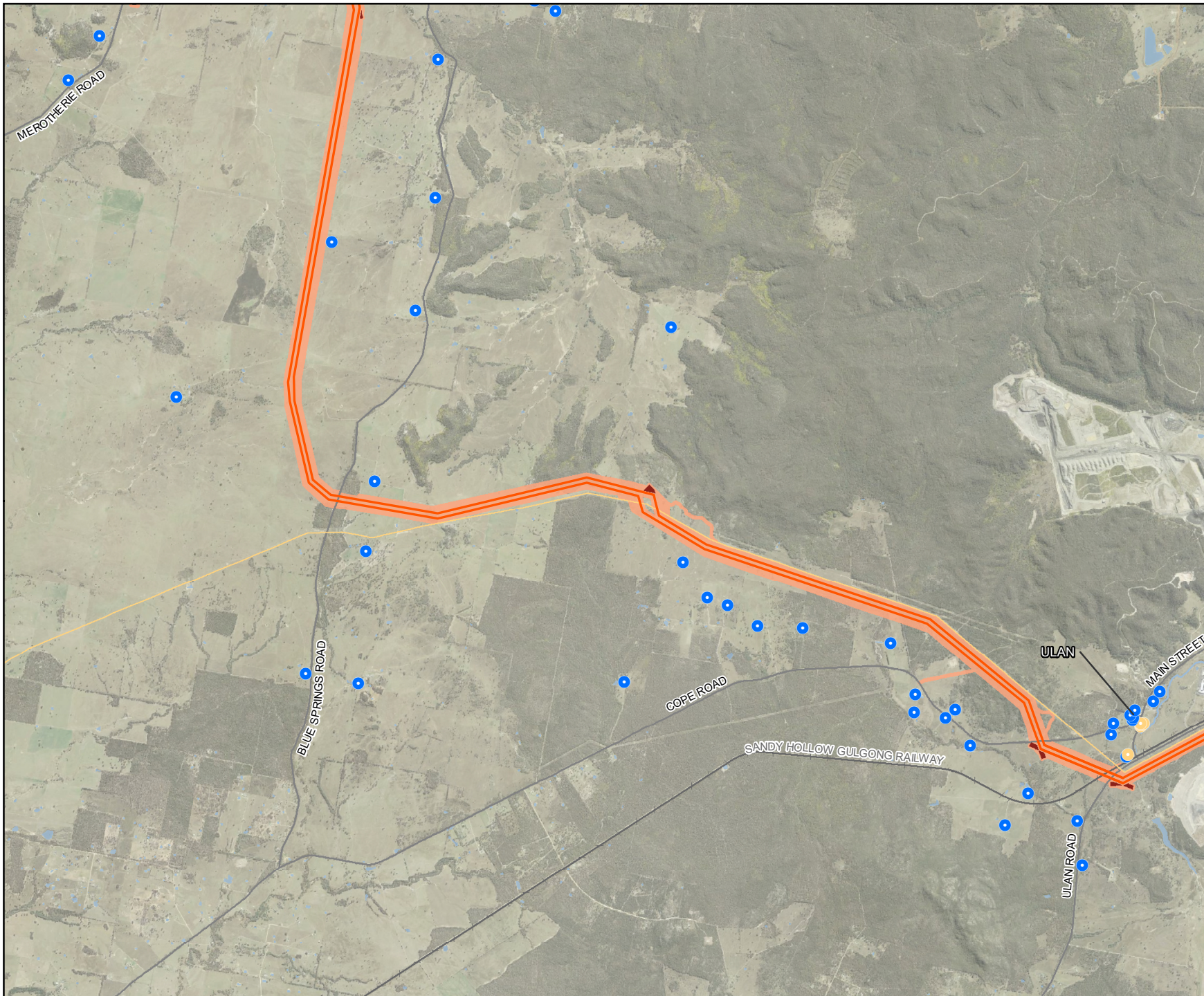
- 330 kV switching station
- 500 kV transmission line

Other features

- Existing transmission line
- Road
- Watercourse
- Water body

Sensitive receivers

- House
- School

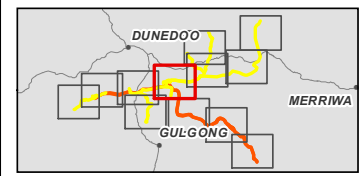
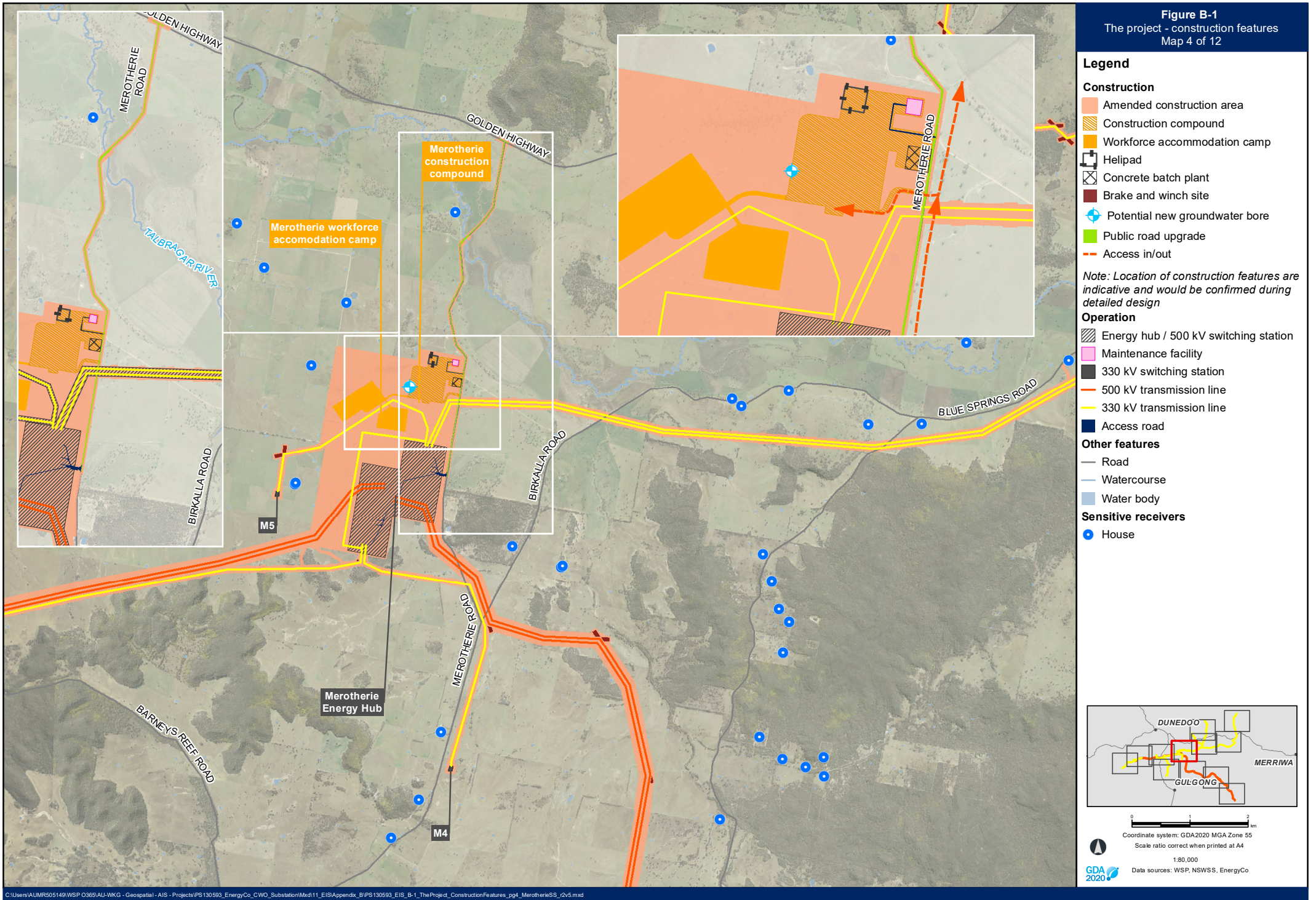


0 1 2 km
Coordinate system: GDA2020 MGA Zone 55
Scale ratio correct when printed at A4



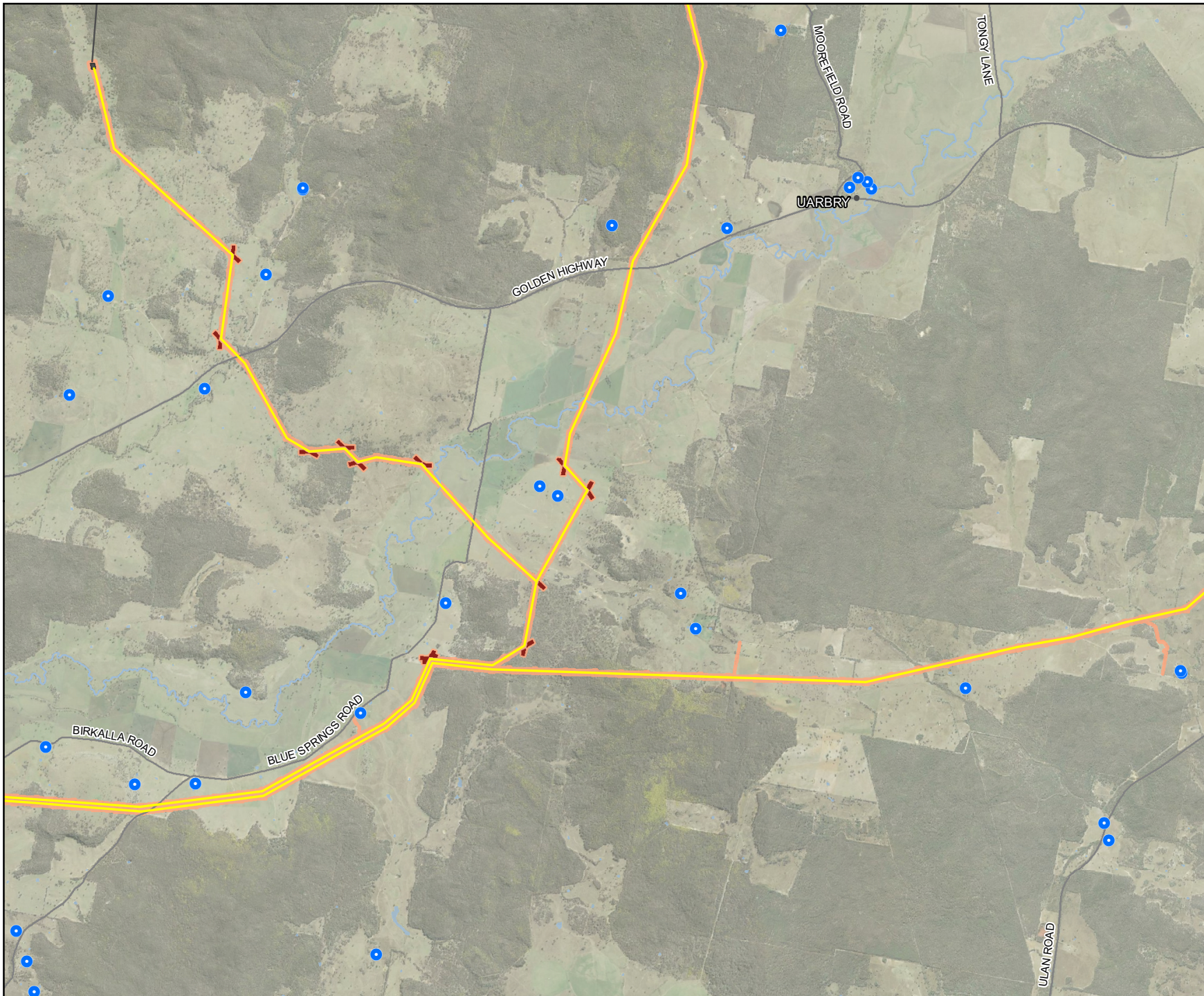
1:80,000
Data sources: WSP, NSWSS, EnergyCo

Figure B-1
The project - construction features
Map 4 of 12

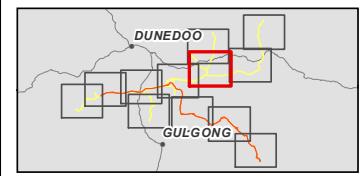


0 1 2 km
Coordinate system: GDA2020 MGA Zone 55
Scale ratio correct when printed at A4
1:80,000
Data sources: WSP, NSWSS, EnergyCo

Figure B-1
The project - construction features
Map 5 of 12



- Legend**
- Construction**
- Amended construction area
 - Brake and winch site
- Note: Location of construction features are indicative and would be confirmed during detailed design*
- Operation**
- 330 kV switching station
 - 330 kV transmission line
- Other features**
- Road
 - Watercourse
 - Water body
- Sensitive receivers**
- House



0 1 2 km

Coordinate system: GDA2020 MGA Zone 55
Scale ratio correct when printed at A4

1:80,000

Data sources: WSP, NSWSS, EnergyCo


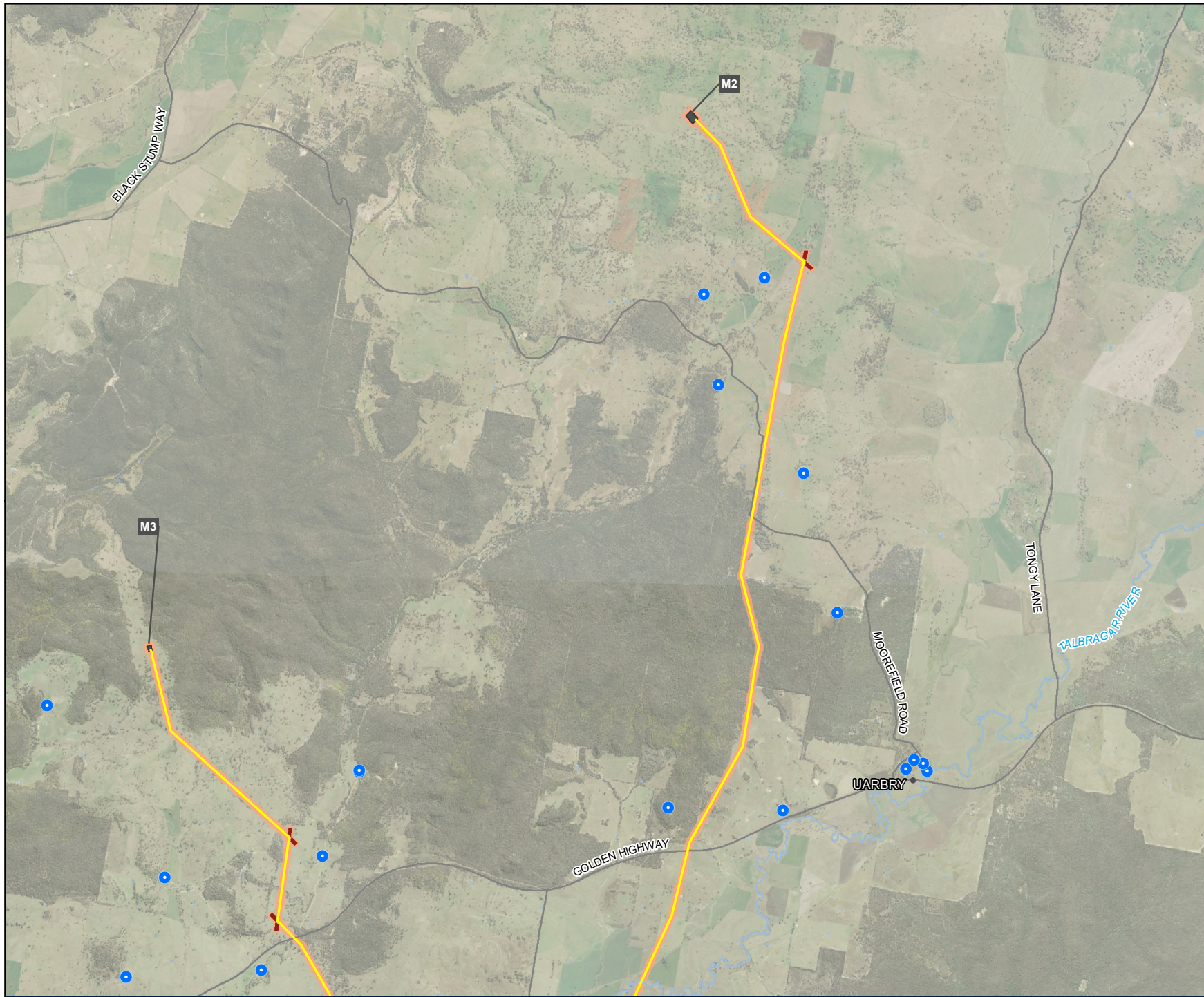


Figure B-1
The project - construction features
Map 6 of 12



Legend

Construction

- Amended construction area
- Brake and winch site

Note: Location of construction features are indicative and would be confirmed during detailed design

Operation

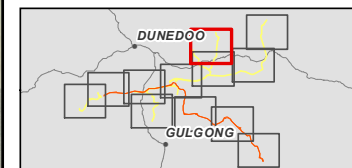
- 330 kV switching station
- 330 kV transmission line

Other features

- Road
- Watercourse
- Water body

Sensitive receivers

- House



0 1 2 km
Coordinate system: GDA2020 MGA Zone 55
Scale ratio correct when printed at A4








1:80,000
Data sources: WSP, NSWSS, EnergyCo

Figure B-1

The project - construction features
Map 7 of 12

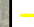
Legend

Construction




-  Amended construction area
-  Construction compound
-  Workforce accommodation camp
-  Brake and winch site
-  Public road upgrade

Note: Location of construction features are indicative and would be confirmed during detailed design

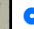
Operation

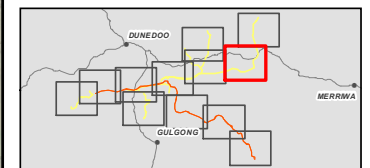
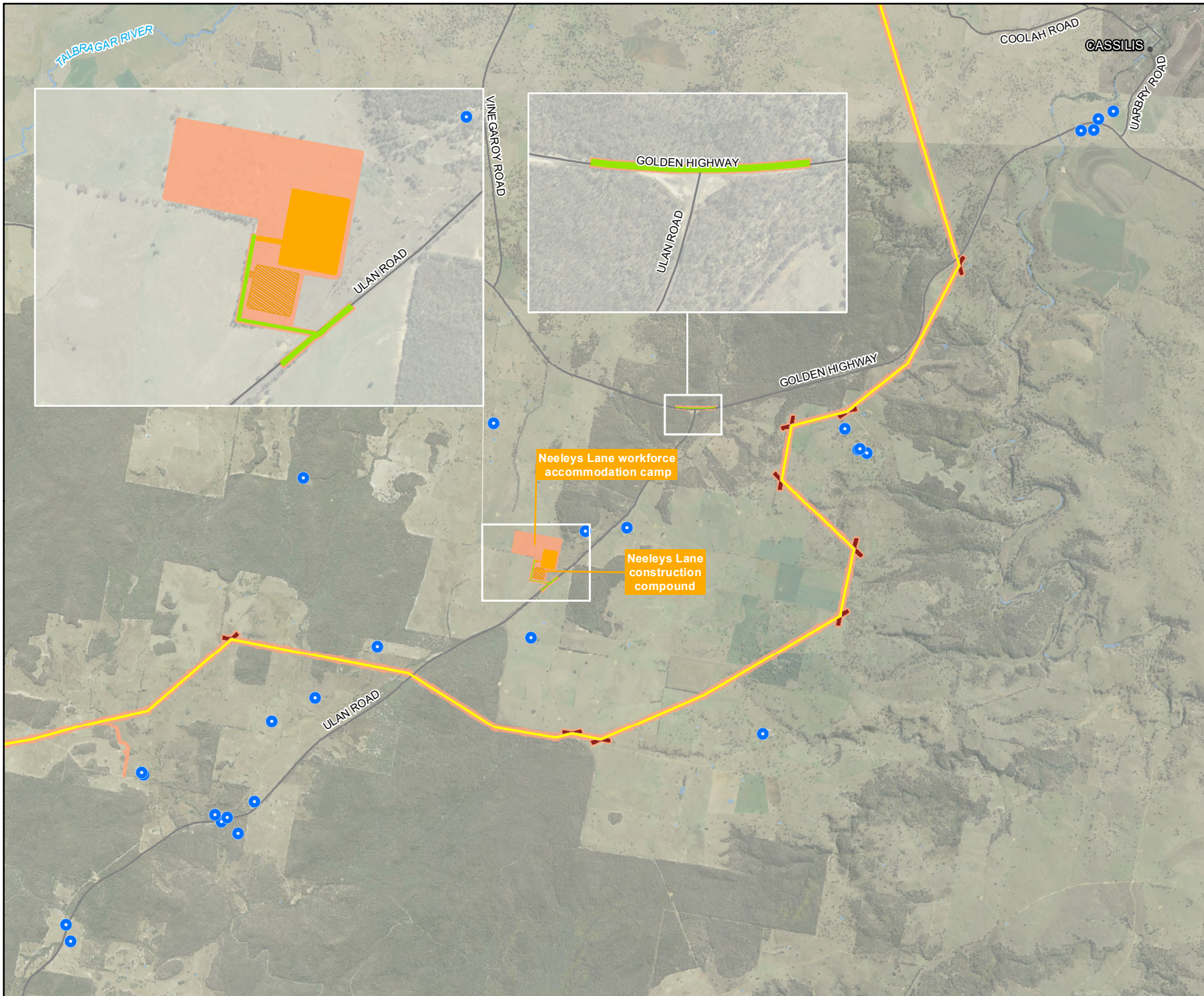
-  330 kV transmission line

Other features

-  Road
-  Watercourse
-  Water body

Sensitive receivers

-  House

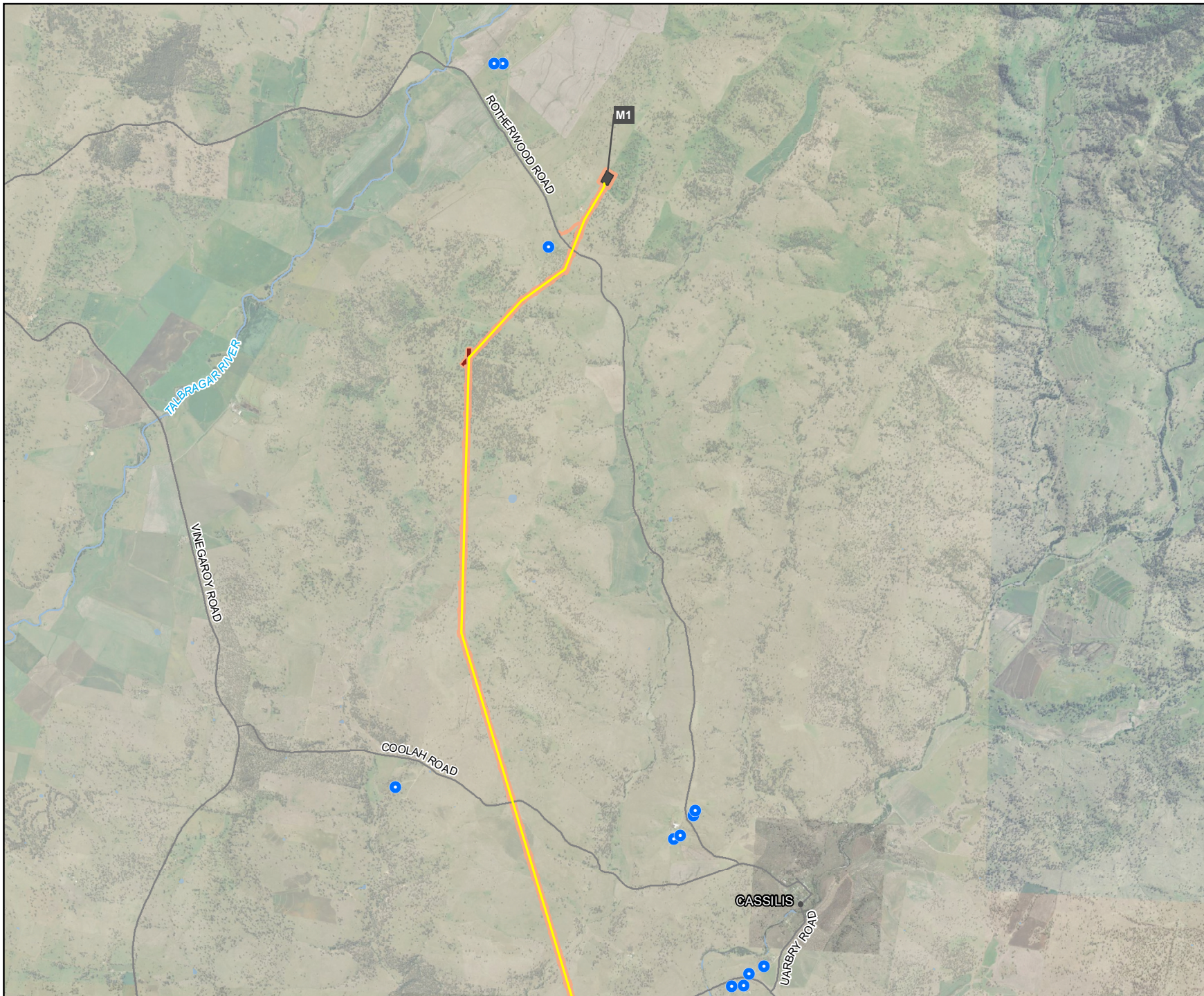


0 1 2 km
Coordinate system: GDA2020 MGA Zone 55
Scale ratio correct when printed at A4



1:80,000
Data sources: WSP, NSWSS, EnergyCo

Figure B-1
The project - construction features
Map 8 of 12



Legend

Construction

- Amended construction area
- Brake and winch site

Note: Location of construction features are indicative and would be confirmed during detailed design

Operation

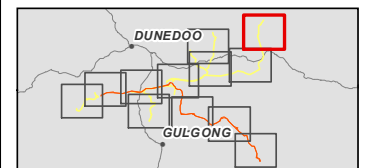
- 330 kV switching station

Other features

- Road
- Watercourse
- Water body

Sensitive receivers

- House



0 1 2 km
Coordinate system: GDA2020 MGA Zone 55
Scale ratio correct when printed at A4



1:80,000
Data sources: WSP, NSWSS, EnergyCo

Figure B-1
The project - construction features
Map 9 of 12

Legend

Construction

Amended construction area

Brake and winch site

Note: Location of construction features are indicative and would be confirmed during detailed design

Operation

330 kV switching station

500 kV transmission line

330 kV transmission line

Other features

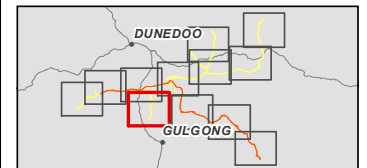
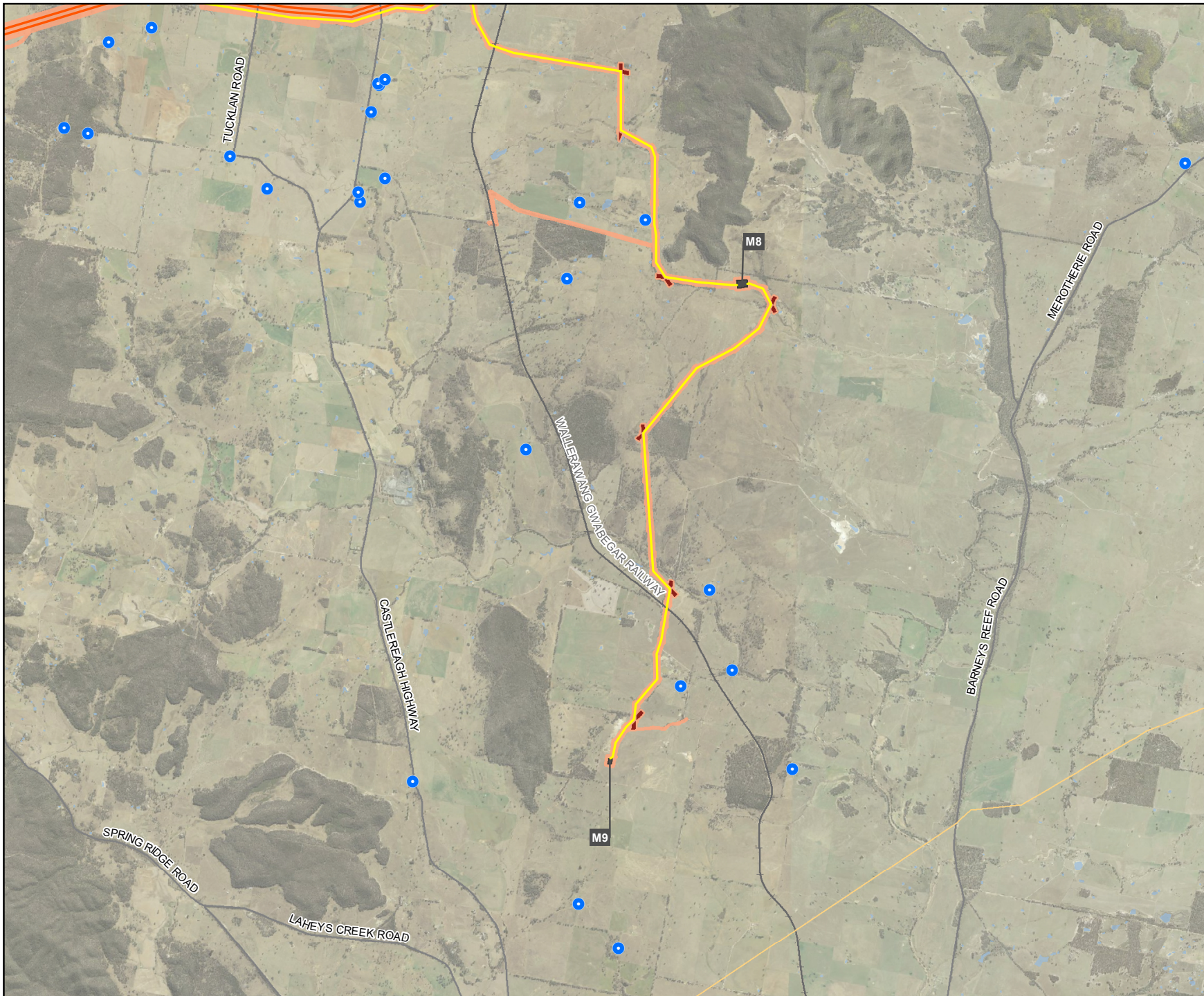
Existing transmission line

Road

Water body

Sensitive receivers

House



0 1 2 km
Coordinate system: GDA2020 MGA Zone 55
Scale ratio correct when printed at A4



1:80,000
Data sources: WSP, NSWSS, EnergyCo

Figure B-1
The project - construction features
Map 10 of 12

Legend

Construction

- Amended construction area
- Brake and winch site

Note: Location of construction features are indicative and would be confirmed during detailed design

Operation

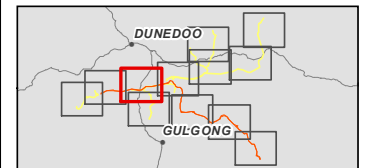
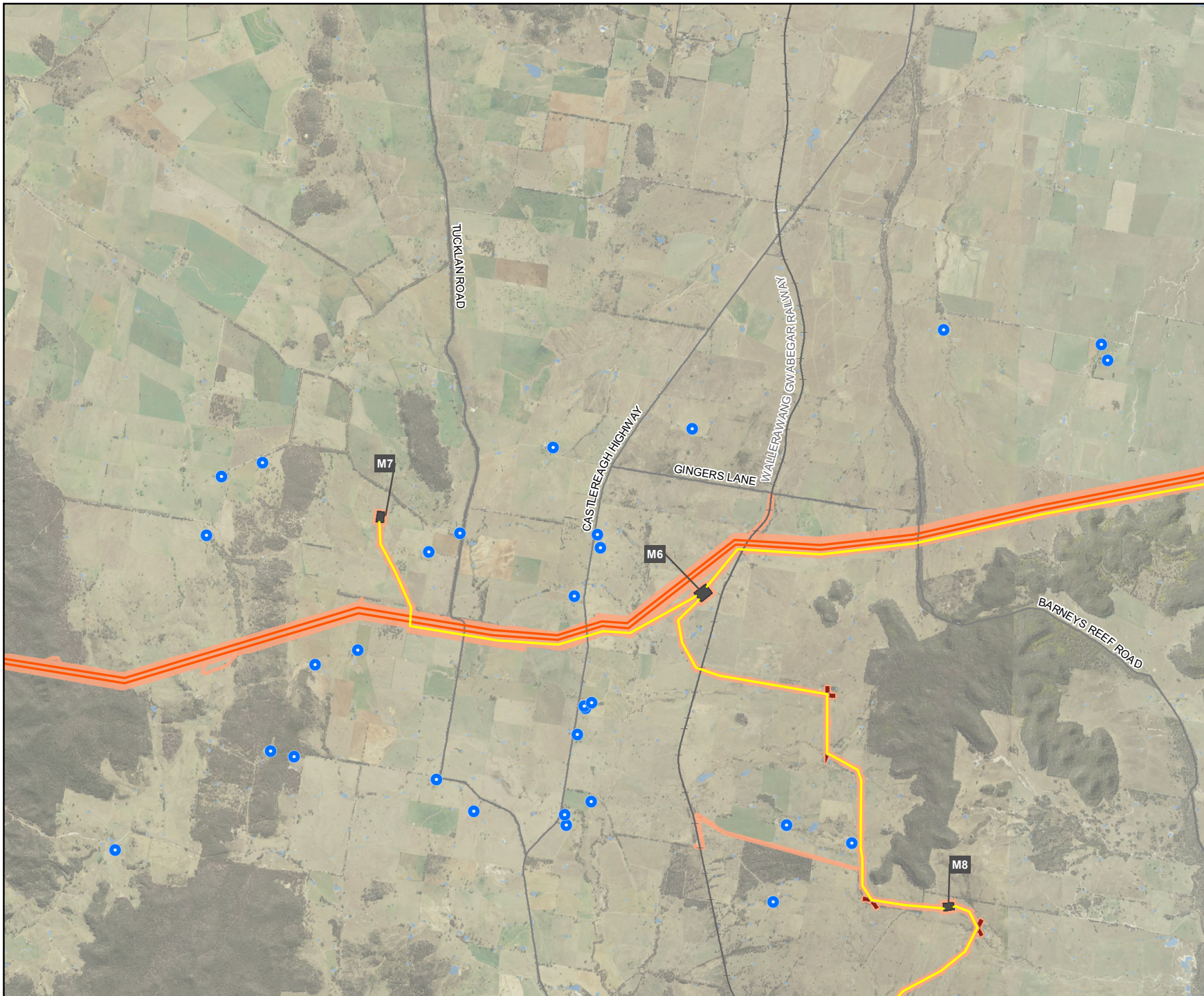
- 330 kV switching station
- 500 kV transmission line
- 330 kV transmission line

Other features

- Road
- Watercourse
- Water body

Sensitive receivers

- House



0 1 2 km
Coordinate system: GDA2020 MGA Zone 55
Scale ratio correct when printed at A4



1:80,000
Data sources: WSP, NSWSS, EnergyCo

GOLDEN HIGHWAY

SPRING RIDGE ROAD

Elong Elong construction compound

E1

E2

E3

DAPPER ROAD

Elong Elong Energy Hub

E5

DAPPER ROAD









SPRING RIDGE ROAD

Figure B-1

The project - construction features
Map 11 of 12




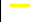

Legend

Construction




-  Amended construction area
-  Construction compound
-  Workforce accommodation camp
-  Helipad
-  Concrete batch plant
-  Potential new groundwater bore
-  Public road upgrade
-  Access in/out

Note: Location of construction features are indicative and would be confirmed during detailed design


Operation

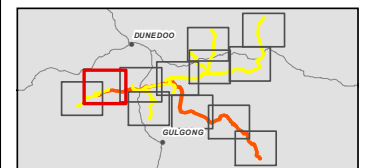
-  Energy hub / 500 kV switching station
-  330 kV switching station
-  500 kV transmission line
-  330 kV transmission line
-  Access road

Other features

-  Road
-  Watercourse
-  Water body

Sensitive receivers

-  House

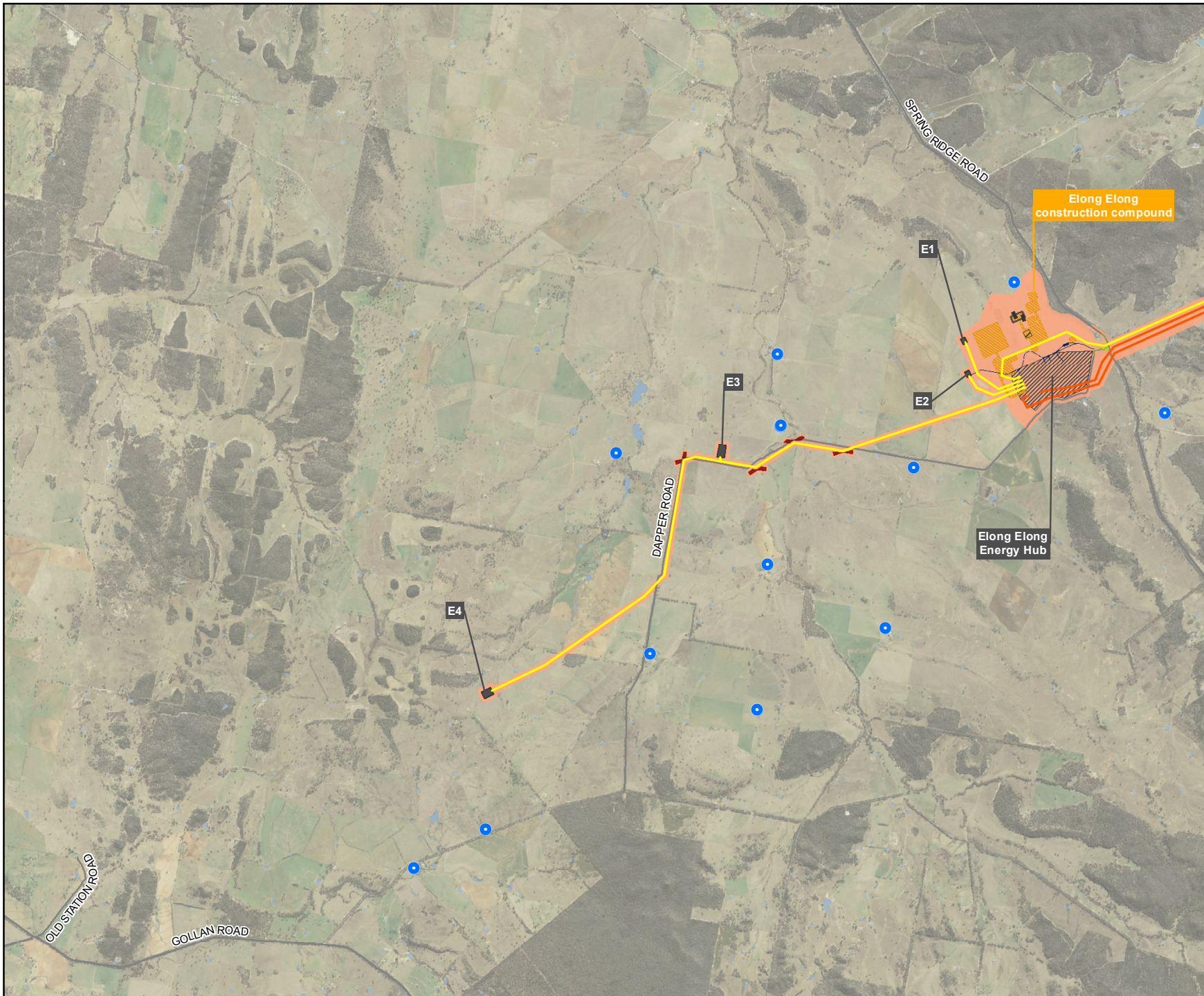


0 1 2 km
 Coordinate system: GDA2020 MGA Zone 55
 Scale ratio correct when printed at A4

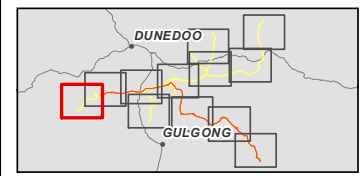


1:80,000
 Data sources: WSP, NSWSS, EnergyCo

Figure B-1
The project - construction features
Map 12 of 12

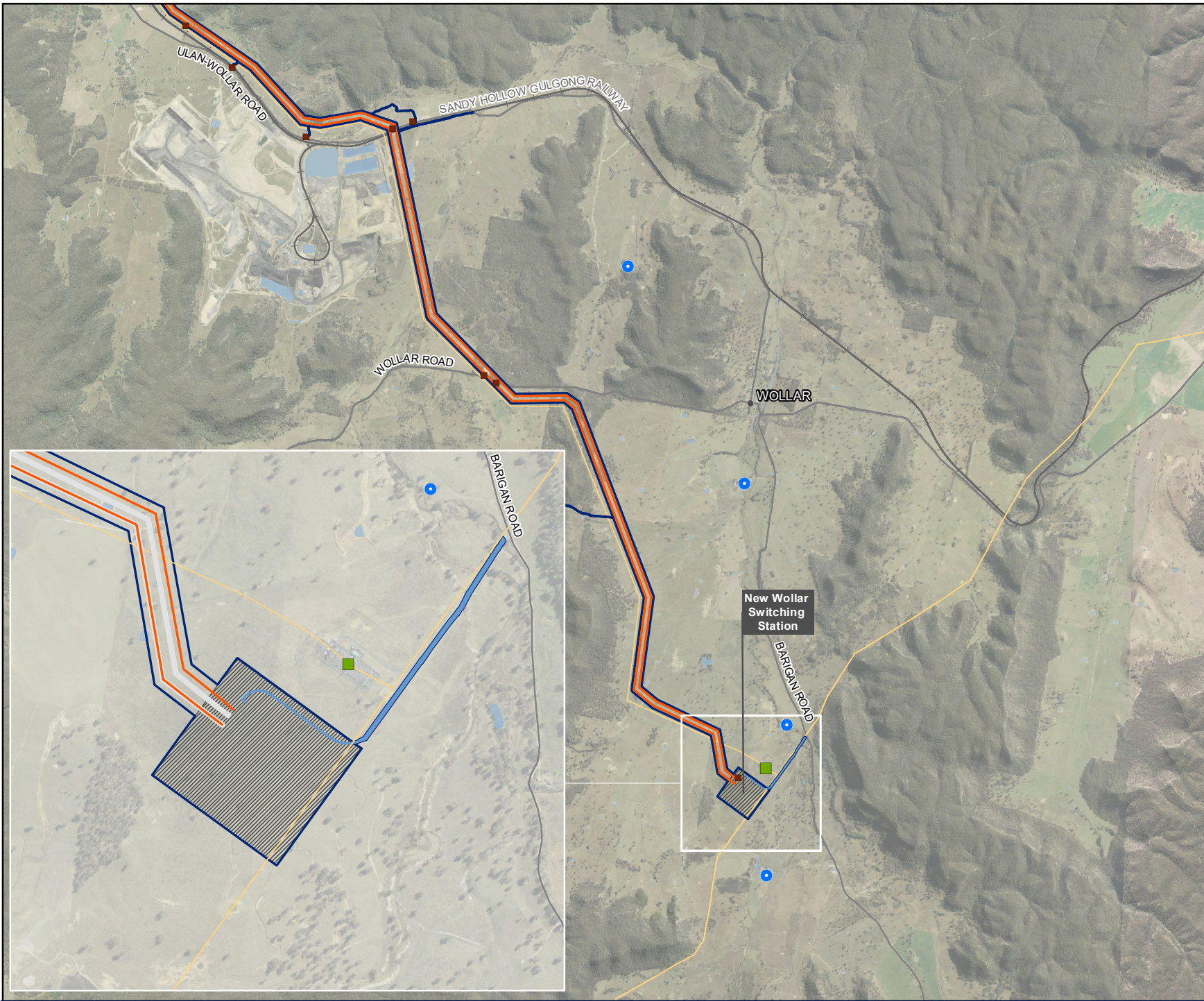


- Legend**
- Construction**
- Amended construction area
 - Construction compound
 - Helipad
 - Concrete batch plant
 - Brake and winch site
 - Public road upgrade
- Note: Location of construction features are indicative and would be confirmed during detailed design*
- Operation**
- Energy hub / 500 kV switching station
 - 330 kV switching station
 - 500 kV transmission line
 - 330 kV transmission line
 - Access road
- Other features**
- Road
 - Water body
- Sensitive receivers**
- House

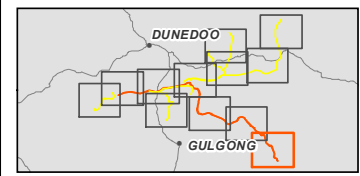


0 1 2 km
Coordinate system: GDA2020 MGA Zone 55
Scale ratio correct when printed at A4
1:80,000
Data sources: WSP, NSWSS, EnergyCo

Figure B-2
The project - operational features
Map 1 of 12

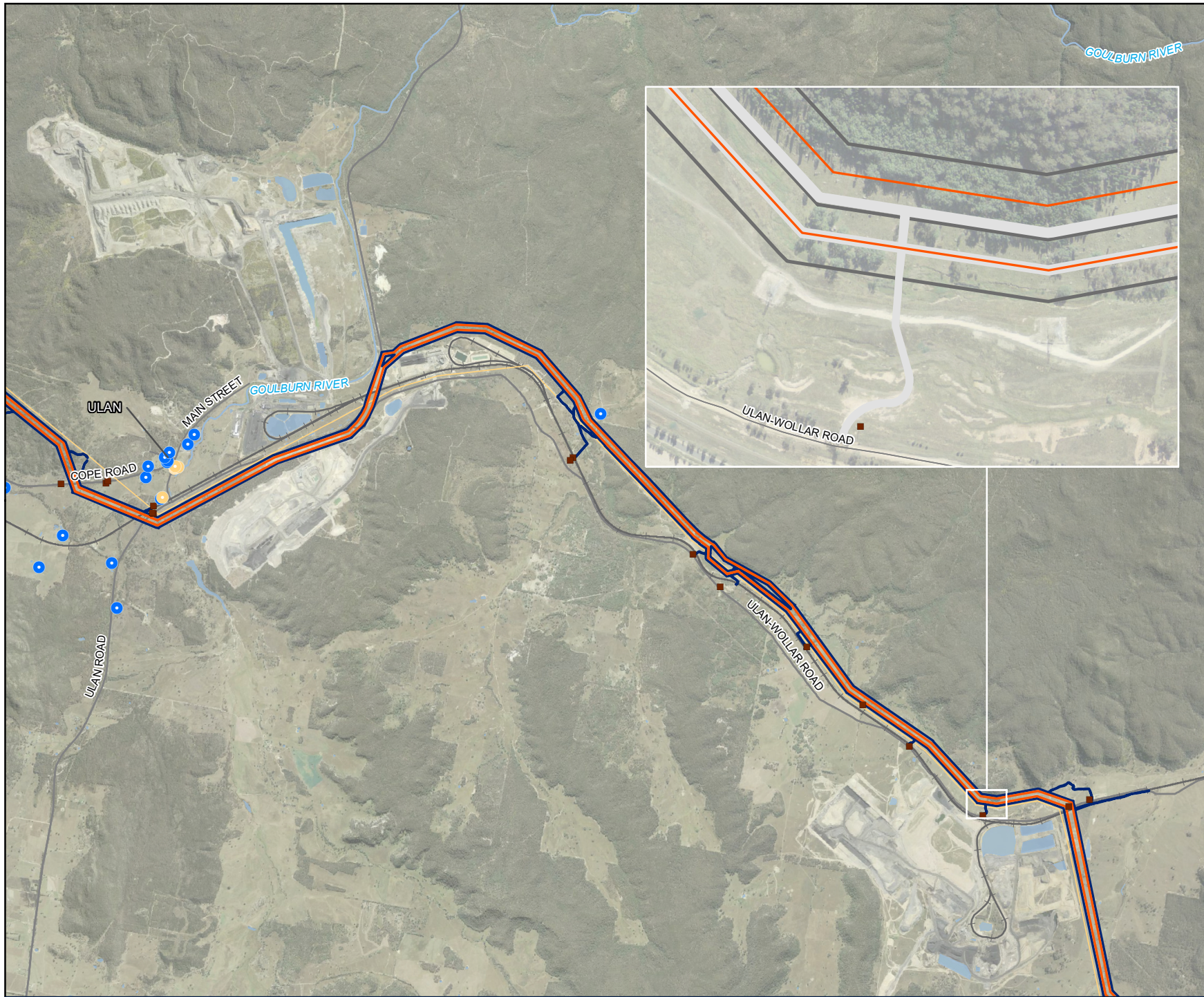


- Legend**
- Amended operation area
 - Energy hub / 500 kV switching station
 - 500 kV transmission line
 - Access road
 - Access track
 - Access gate
 - Sensitive receiver**
 - House
 - Other features**
 - Existing Transgrid Wollar Substation
 - Existing transmission line
 - Railway
 - Road
 - Water body

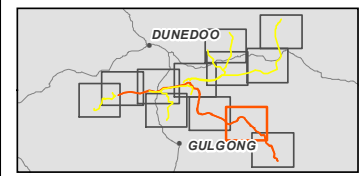


0 1 2 km
Coordinate system: GDA2020 MGA Zone 55
Scale ratio correct when printed at A4
1:80,000
Data sources: WSP, NSWSS, EnergyCo

Figure B-2
The project - operational features
Map 2 of 12



- Legend**
- Amended operation area
 - 500 kV transmission line
 - Easement
 - Access track
 - Access gate
- Sensitive receivers**
- House
 - School
- Other features**
- Existing transmission line
 - Railway
 - Road
 - Watercourse
 - Water body



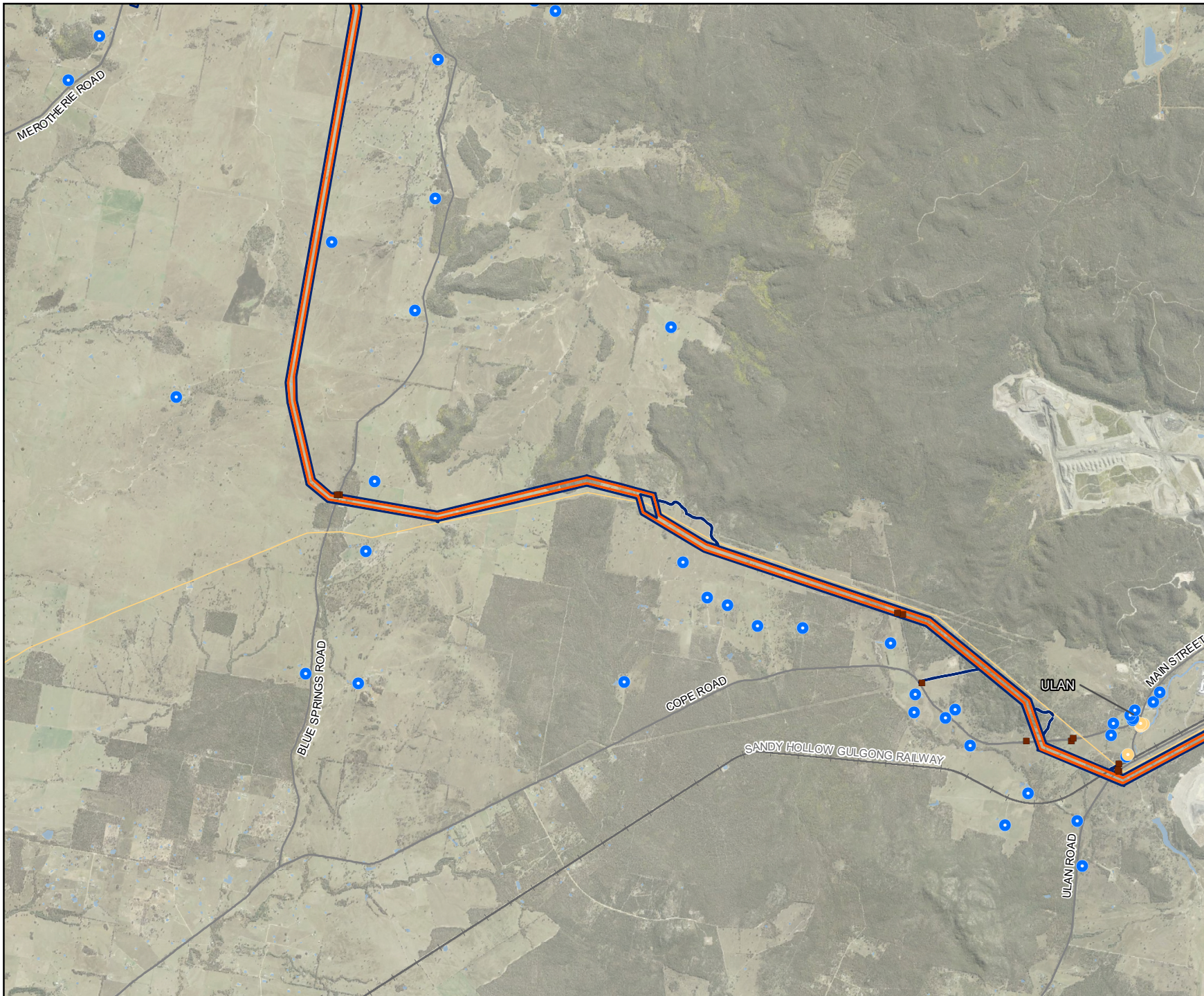
0 1 2 km

Coordinate system: GDA2020 MGA Zone 55
Scale ratio correct when printed at A4

1:80,000

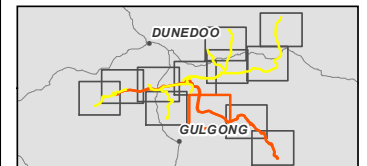
Data sources: WSP, NSWSS, EnergyCo

Figure B-2
The project - operational features
Map 3 of 12



Legend

- Amended operation area
- 330 kV switching station
- 500 kV transmission line
- Access track
- Access gate
- Sensitive receivers**
- House
- School
- Other features**
- Existing transmission line
- Railway
- Road
- Watercourse
- Water body



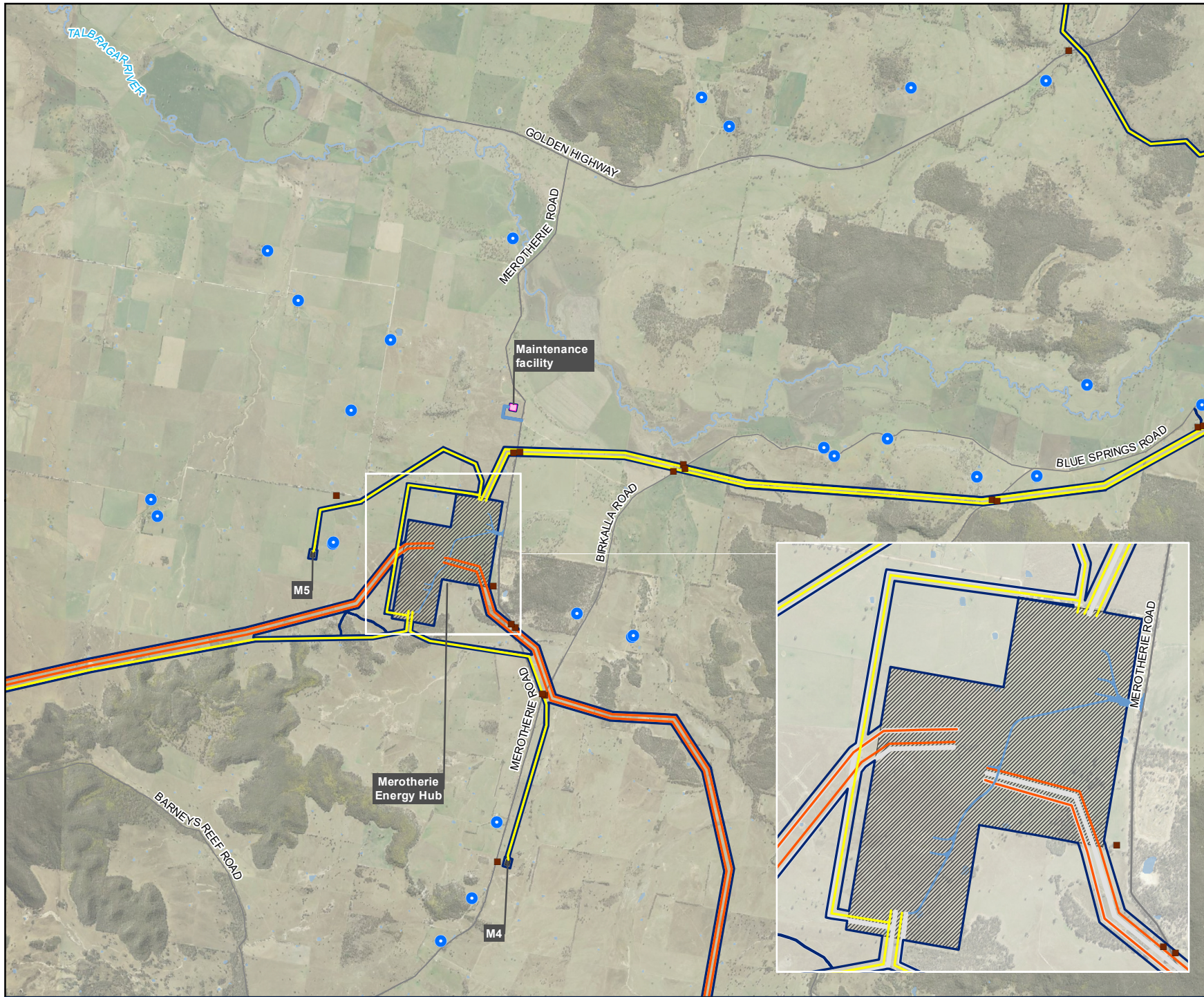
0 1 2 km

Coordinate system: GDA2020 MGA Zone 55
Scale ratio correct when printed at A4

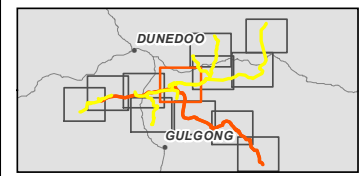
1:80,000
Data sources: WSP, NSWSS, EnergyCo



Figure B-2
The project - operational features
Map 4 of 12



- Legend**
- Amended operation area
 - Energy hub / 500 kV switching station
 - 330 kV switching station
 - 500 kV transmission line
 - 330 kV transmission line
 - Maintenance facility
 - Easement
 - Access road
 - Access track
 - Access gate
- Sensitive receivers**
- House
- Other features**
- Road
 - Watercourse
 - Water body



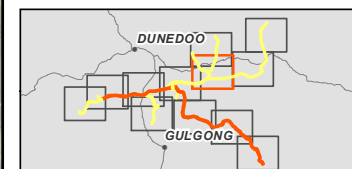
0 1 2 km

Coordinate system: GDA2020 MGA Zone 55
Scale ratio correct when printed at A4
1:80,000
Data sources: WSP, NSWSS, EnergyCo

Figure B-2
The project - operational features
Map 5 of 12



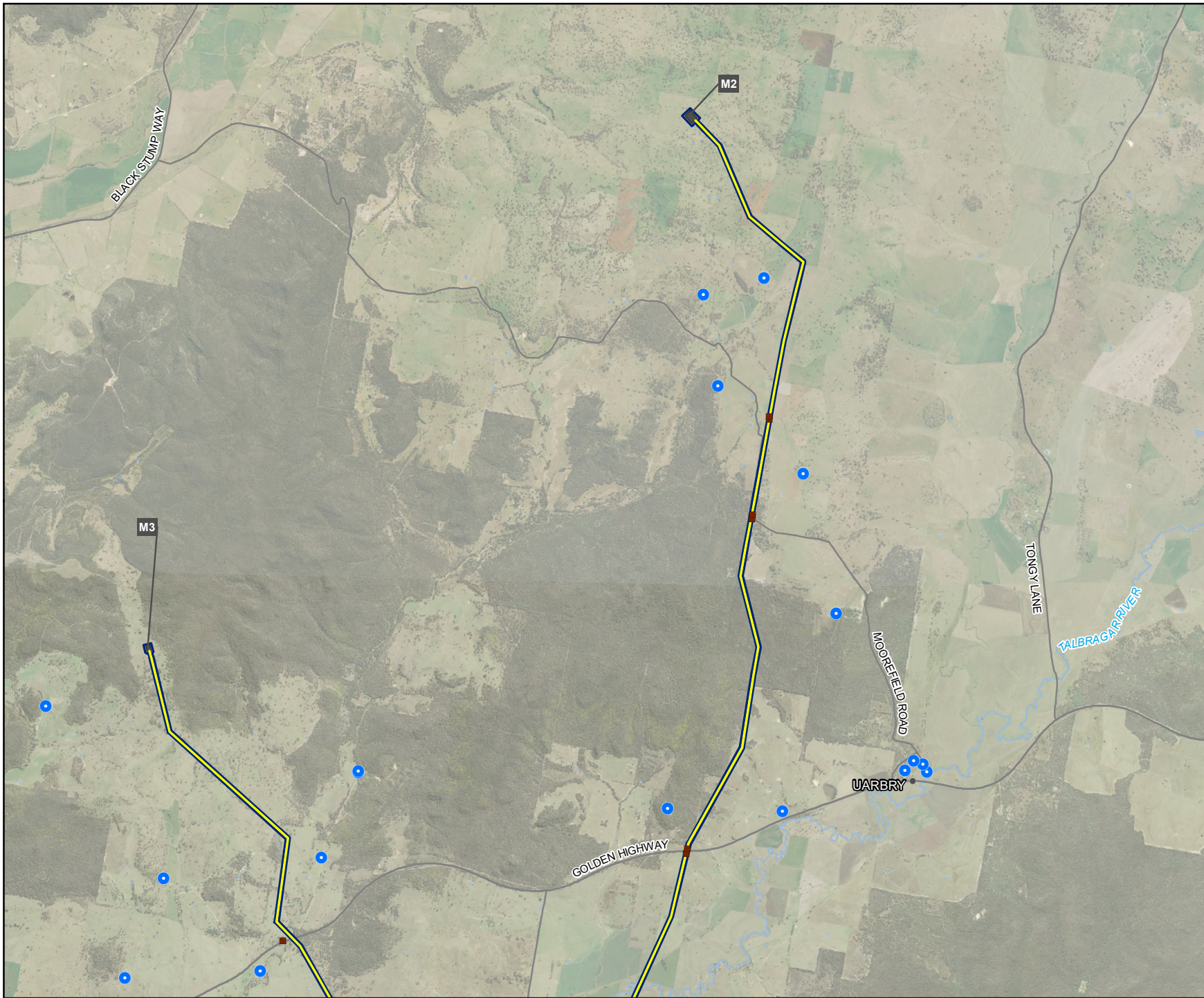
- Legend**
- Amended operation area
 - 330 kV switching station
 - 330 kV transmission line
 - Easement
 - Access track
 - Access gate
- Sensitive receivers**
- House
- Other features**
- Road
 - Watercourse
 - Water body



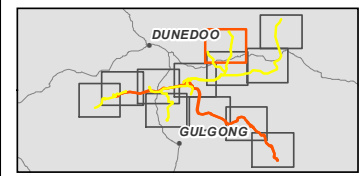
0 1 2 km
Coordinate system: GDA2020 MGA Zone 55
Scale ratio correct when printed at A4
1:80,000
Data sources: WSP, NSWSS, EnergyCo



Figure B-2
The project - operational features
Map 6 of 12



- Legend**
- Amended operation area
 - 330 kV switching station
 - 330 kV transmission line
 - Access track
 - Access gate
 - Sensitive receivers**
 - House
 - Other features**
 - Road
 - Watercourse
 - Water body



0 1 2 km

Coordinate system: GDA2020 MGA Zone 55
Scale ratio correct when printed at A4
1:80,000
Data sources: WSP, NSWSS, EnergyCo


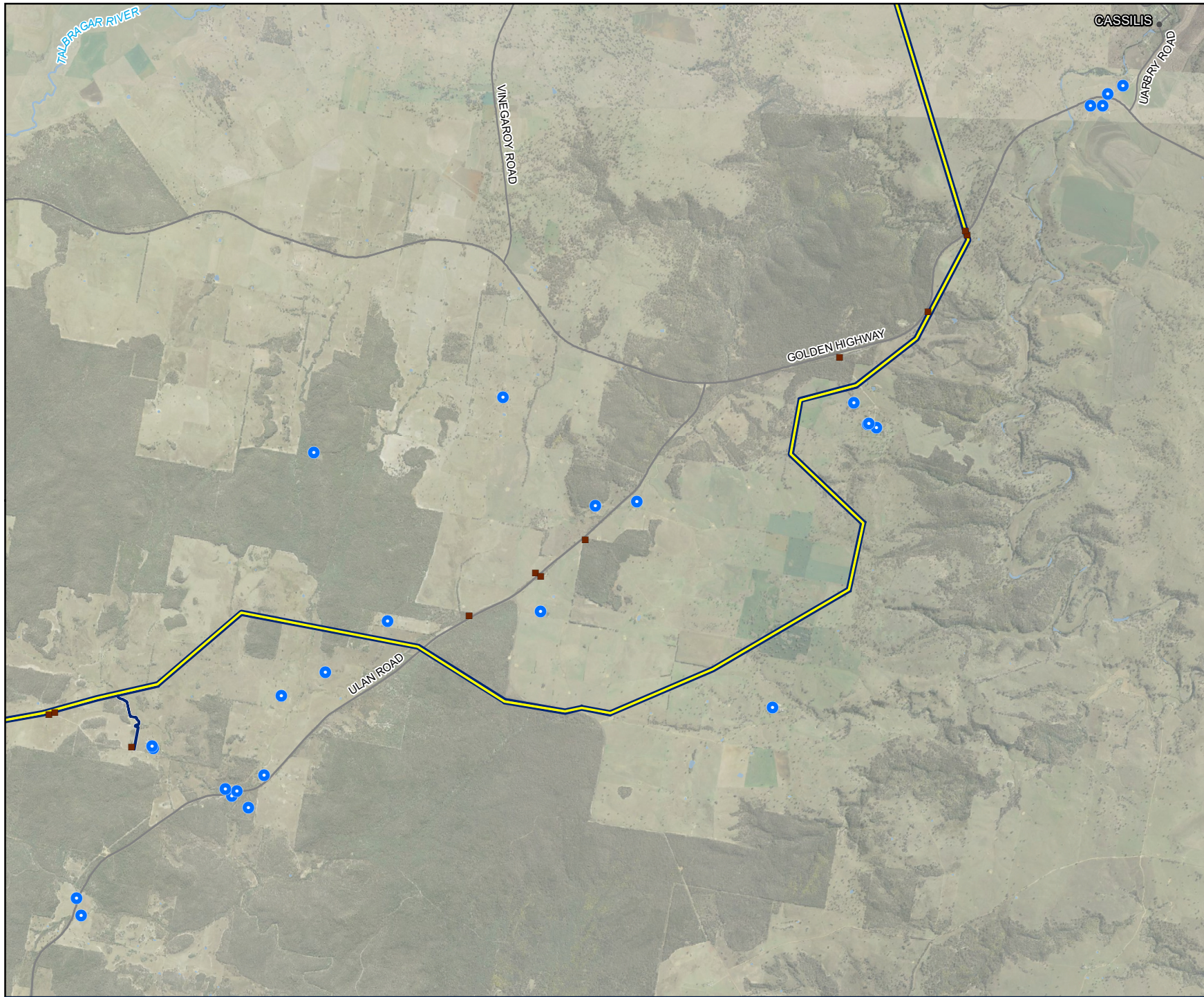
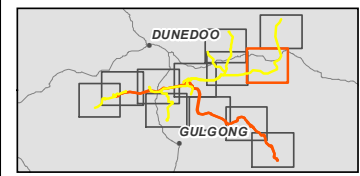


Figure B-2
The project - operational features
Map 7 of 12



- Legend**
- Amended operation area
 - 330 kV transmission line
 - Access track
 - Access gate
 - Sensitive receivers**
 - House
 - Other features**
 - Road
 - Watercourse
 - Water body



0 1 2 km

Coordinate system: GDA2020 MGA Zone 55
Scale ratio correct when printed at A4
1:80,000
Data sources: WSP, NSWSS, EnergyCo

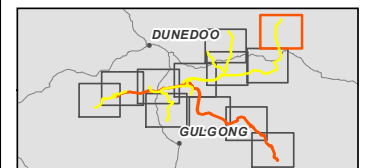


Figure B-2
The project - operational features
Map 8 of 12



Legend

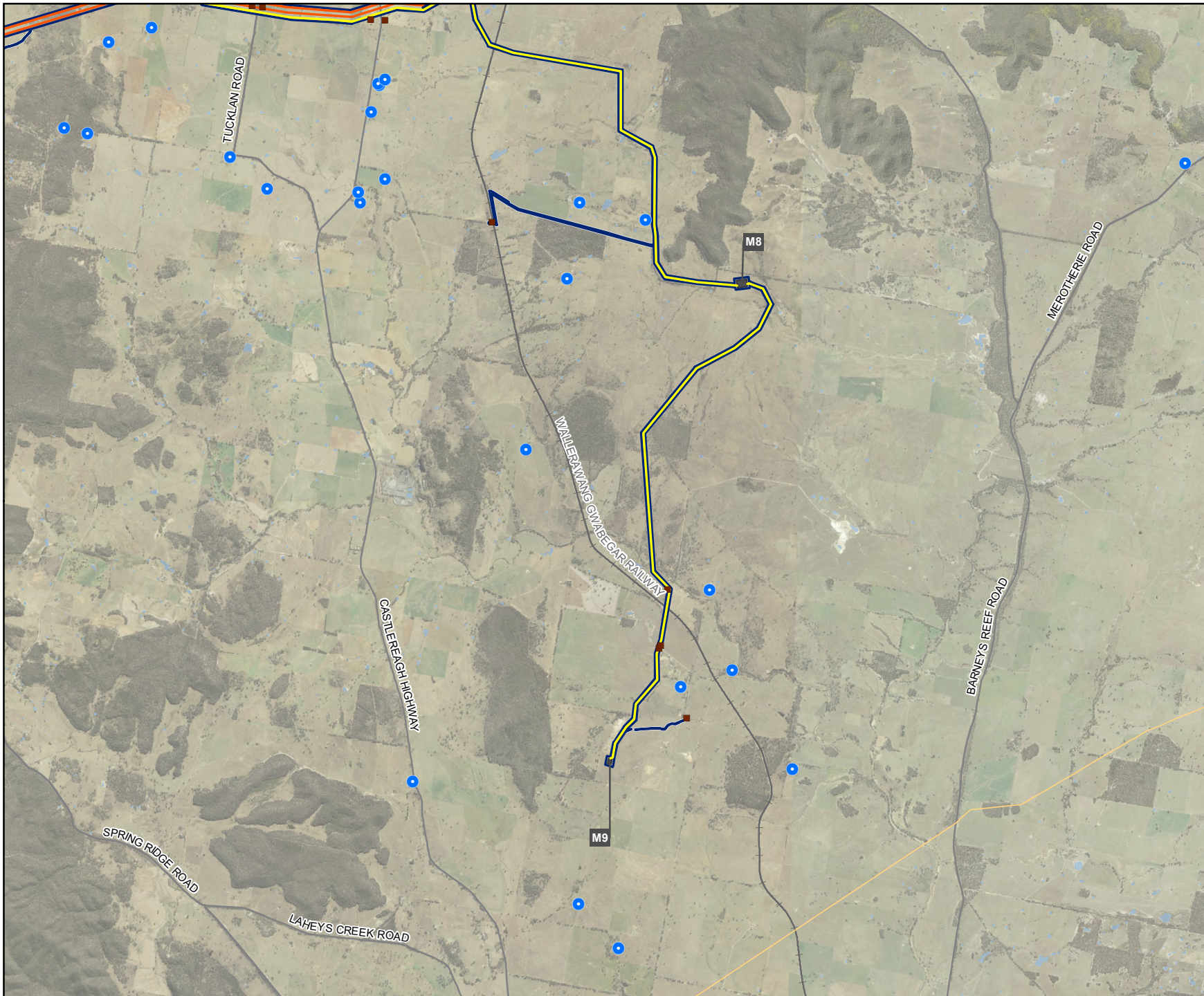
- Amended operation area
- 330 kV switching station
- 330 kV transmission line
- Access track
- Access gate
- Sensitive receivers**
- House
- Other features**
- Road
- Watercourse
- Water body



0 1 2 km
 Coordinate system: GDA2020 MGA Zone 55
 Scale ratio correct when printed at A4
 1:80,000
 Data sources: WSP, NSWSS, EnergyCo

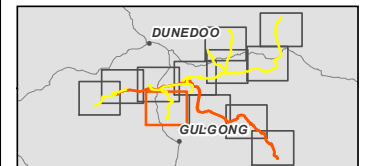


Figure B-2
The project - operational features
Map 9 of 12



Legend

- Amended operation area
- 330 kV switching station
- 500 kV transmission line
- 330 kV transmission line
- Access track
- Access gate
- Sensitive receivers**
- House
- Other features**
- Existing transmission line
- Railway
- Road
- Water body



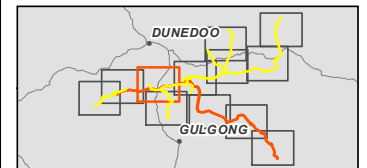
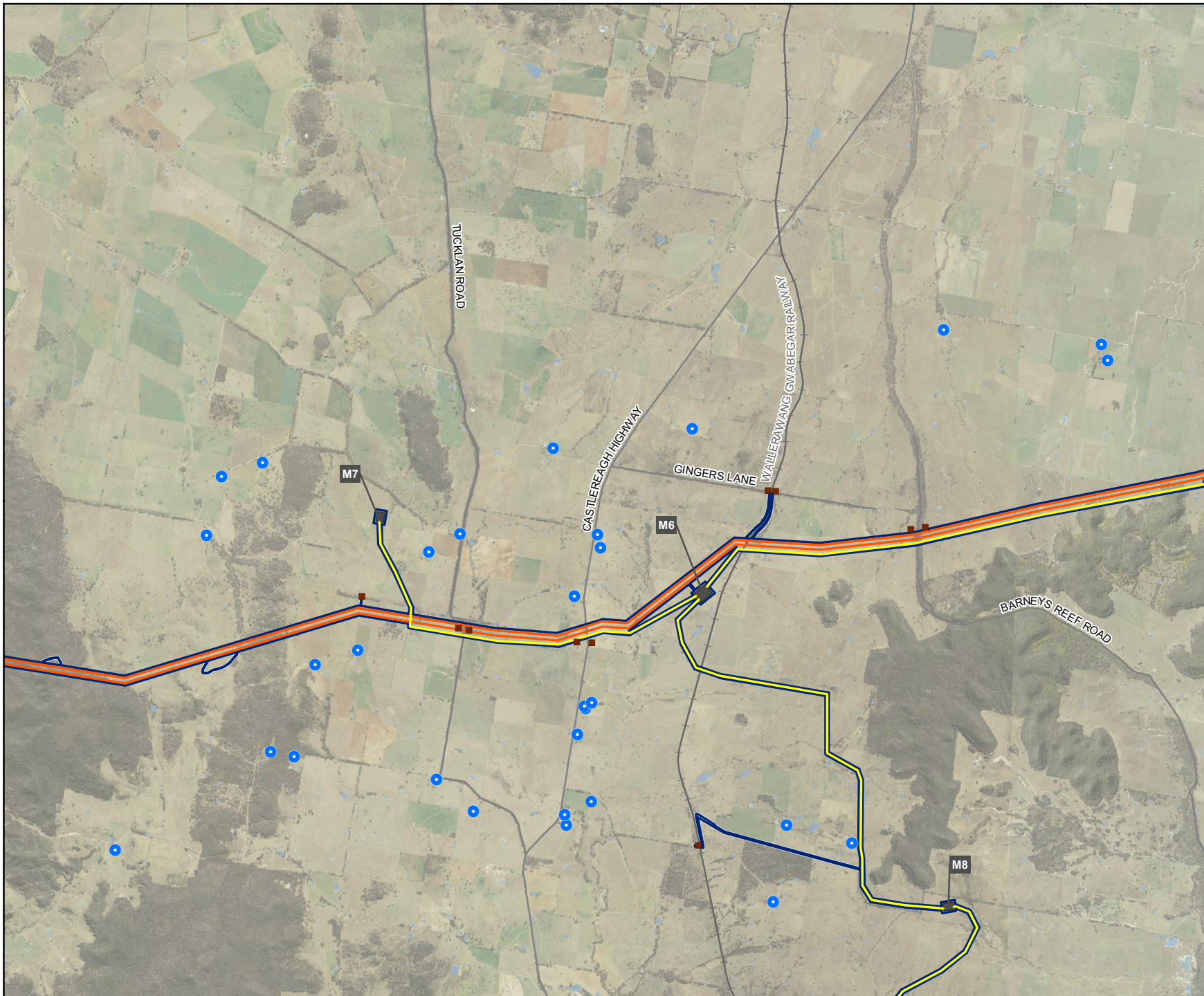
0 1 2 km
 Coordinate system: GDA2020 MGA Zone 55
 Scale ratio correct when printed at A4
 1:80,000
 Data sources: WSP, NSWSS, EnergyCo



Figure B-2
The project - operational features
Map 10 of 12

Legend

- Amended operation area
- 330 kV switching station
- 500 kV transmission line
- 330 kV transmission line
- Access track
- Access gate
- Sensitive receivers**
- House
- Other features**
- Railway
- Road
- Watercourse
- Water body

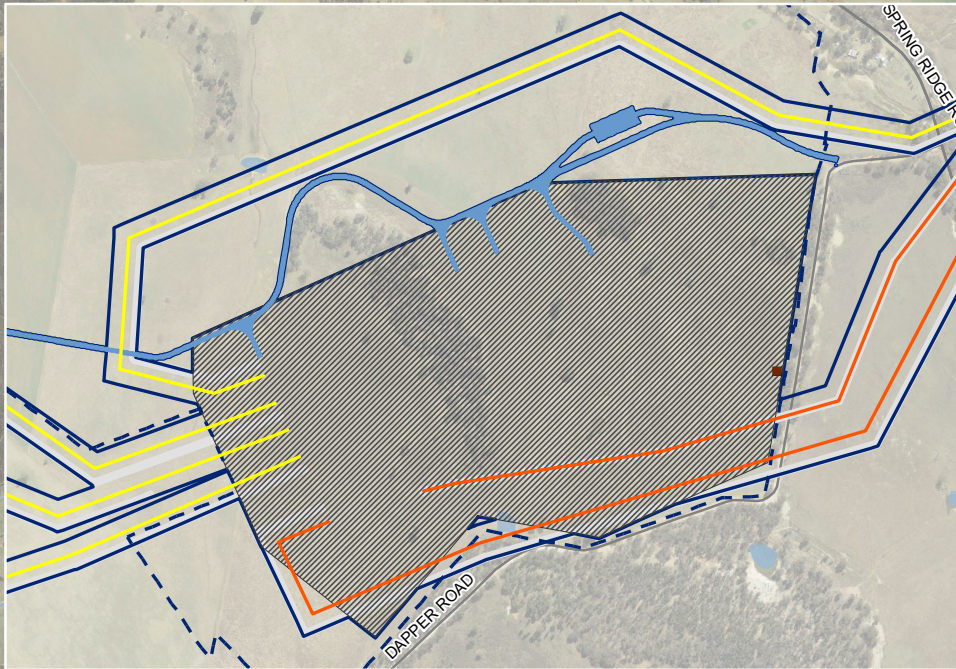
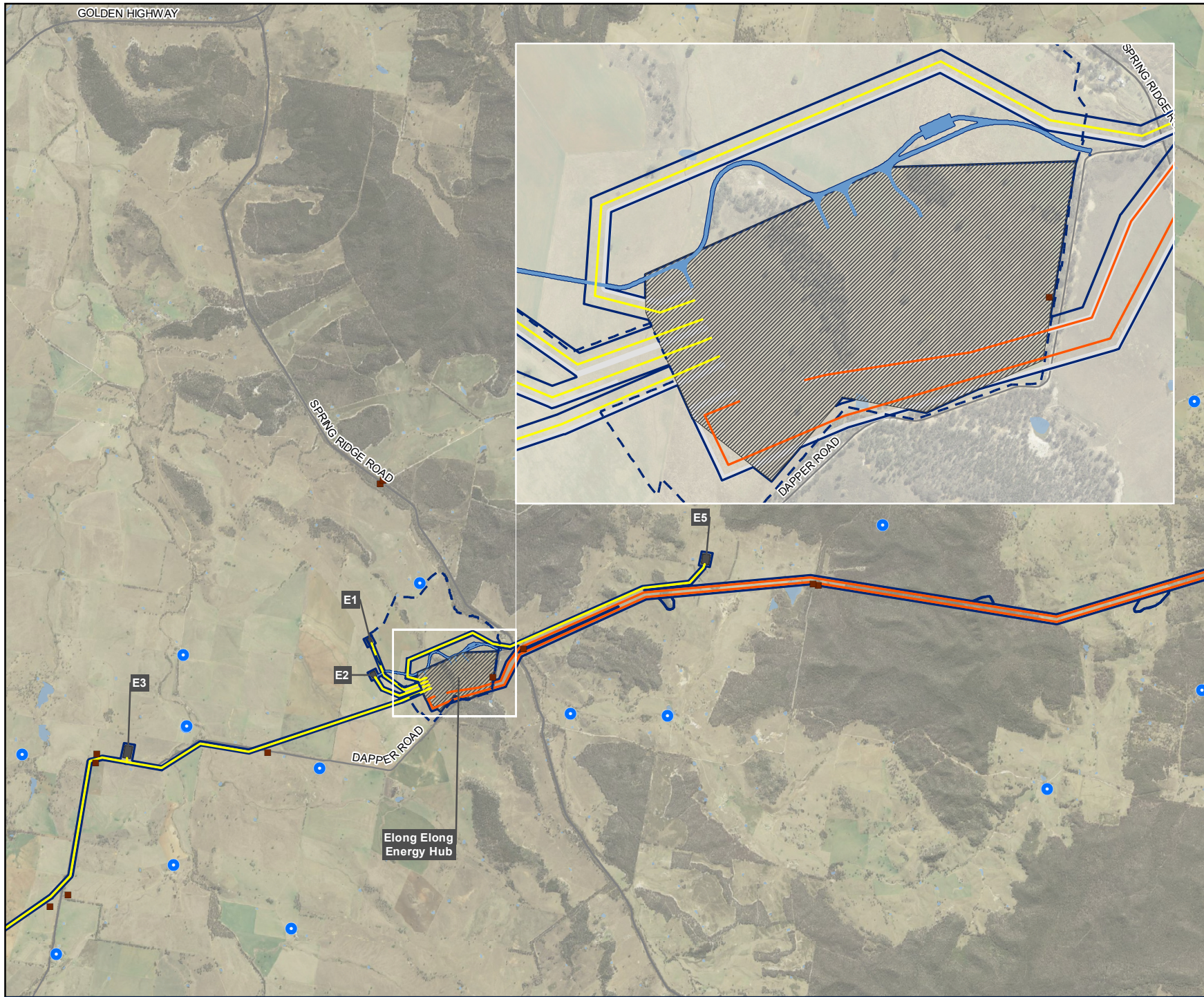


0 1 2 km
Coordinate system: GDA2020 MGA Zone 55
Scale ratio correct when printed at A4
1:80,000
Data sources: WSP, NSWSS, EnergyCo

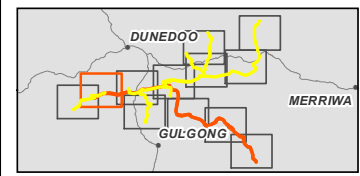


GOLDEN HIGHWAY

Figure B-2
The project - operational features
Map 11 of 12

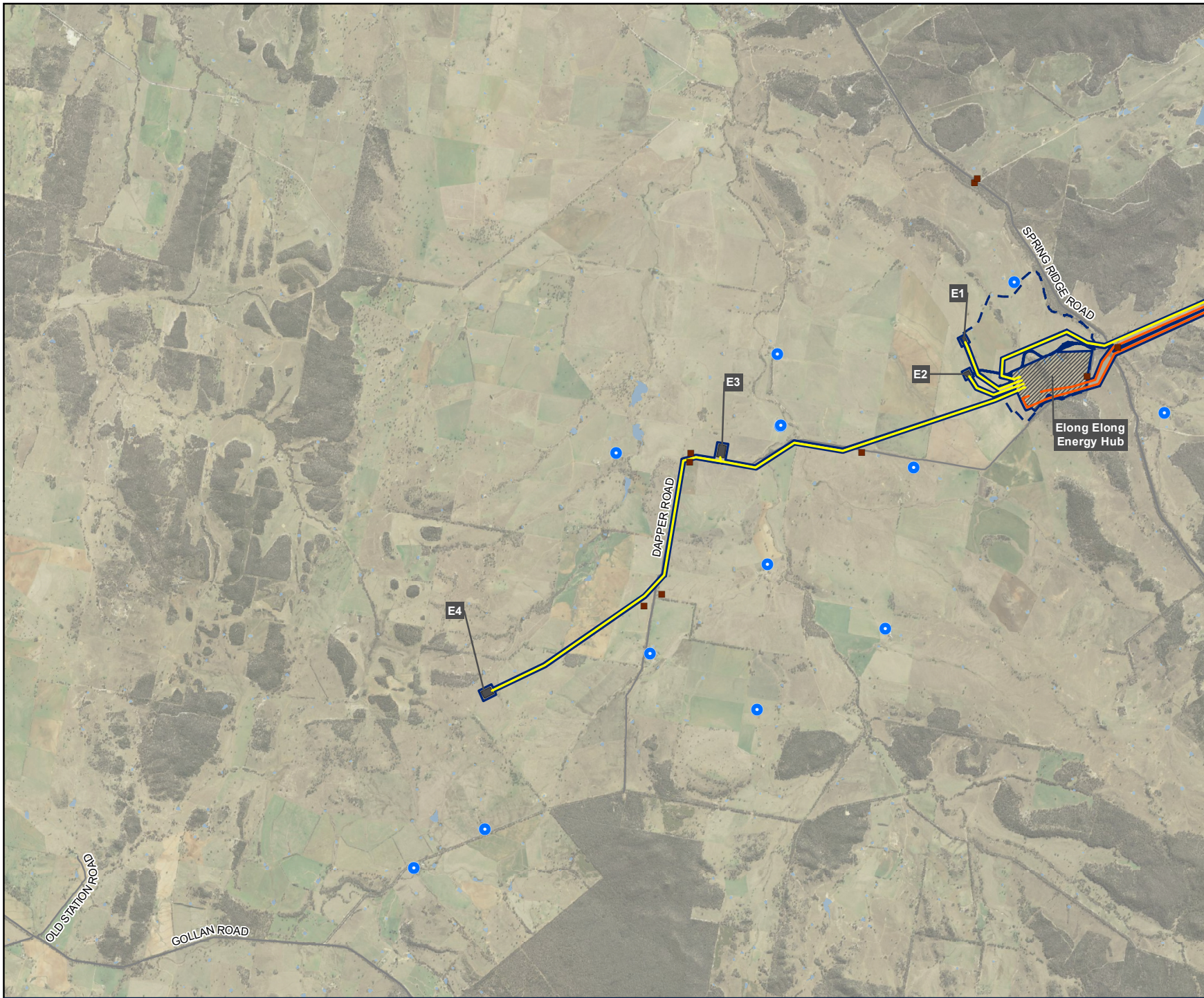


- Legend**
- Amended operation area
 - Potential future expansion
 - Energy hub / 500 kV switching station
 - 330 kV switching station
 - 500 kV transmission line
 - 330 kV transmission line
 - Access road
 - Access track
 - Access gate
- Sensitive receivers**
- House
- Other features**
- Road
 - Watercourse
 - Water body

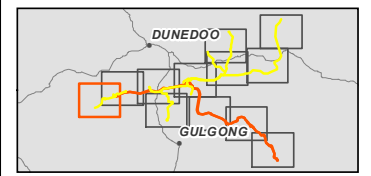


0 1 2 km
 Coordinate system: GDA2020 MGA Zone 55
 Scale ratio correct when printed at A4
 1:80,000
 Data sources: WSP, NSWSS, EnergyCo

Figure B-2
The project - operational features
Map 12 of 12



- Legend**
- Amended operation area
 - Potential future expansion
 - Energy hub / 500 kV switching station
 - 330 kV switching station
 - 500 kV transmission line
 - 330 kV transmission line
 - Access road
 - Access track
 - Access gate
- Sensitive receivers**
- House
- Other features**
- Road
 - Water body



0 1 2 km

Coordinate system: GDA2020 MGA Zone 55
Scale ratio correct when printed at A4
1:80,000
Data sources: WSP, NSWSS, EnergyCo


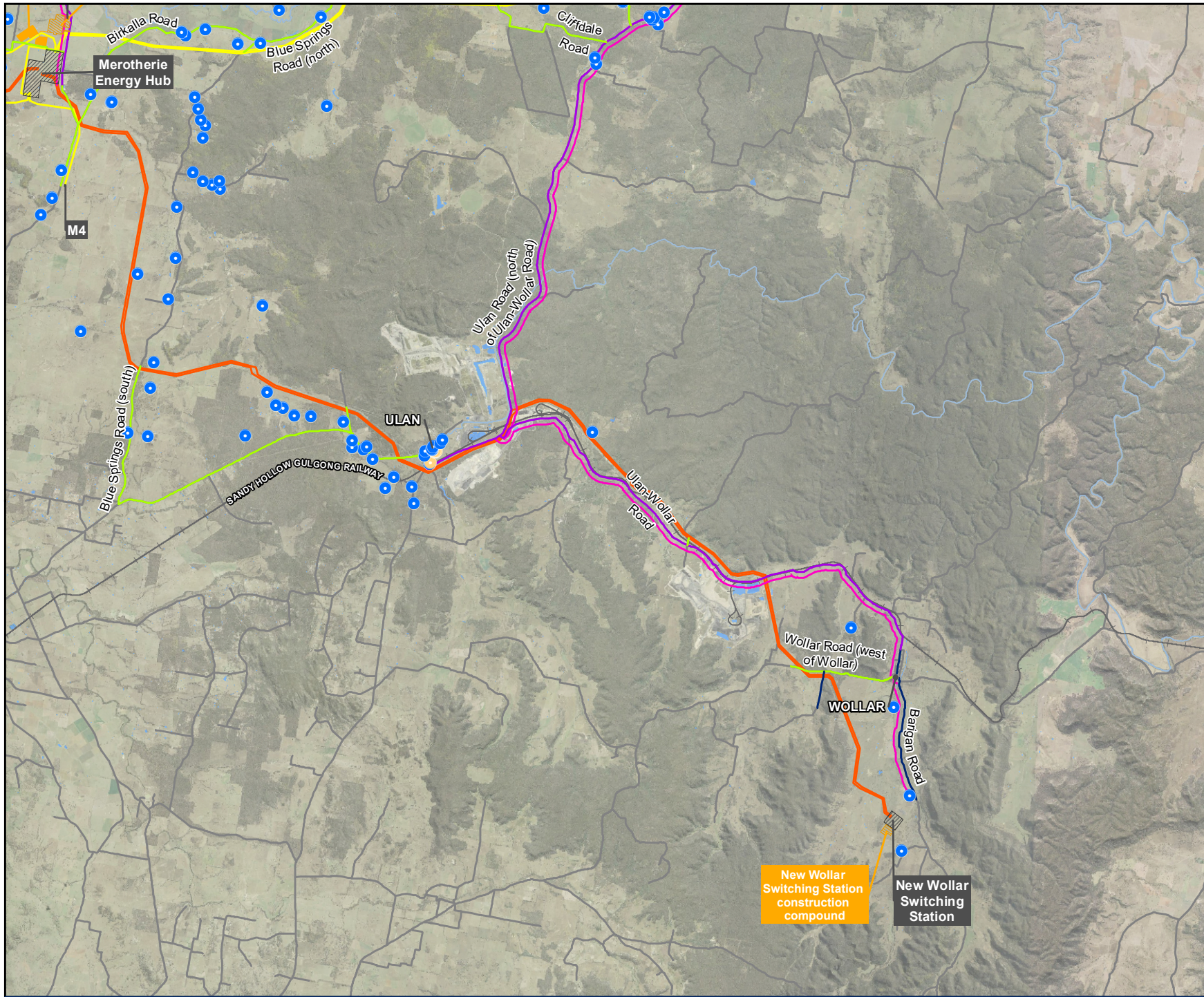
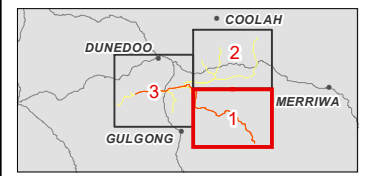


Figure B-3
 Construction routes and
 peak construction volumes
 Map 1 of 3

















- Legend**
- Energy hub / 500 kV switching station
 - 330 kV switching station
 - 500 kV transmission line
 - 330 kV transmission line
 - Construction compound
 - Workforce accommodation camp
 - Road
 - Railway
 - Watercourse
 - Water body
 - OSOM construction route
- General construction routes**
Vehicle movements per hour (light and heavy vehicles)
- 25
 - 50
 - 75
- Sensitive receivers**
- House
 - School

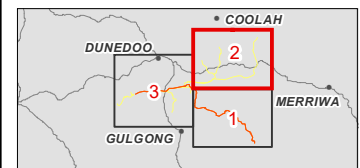
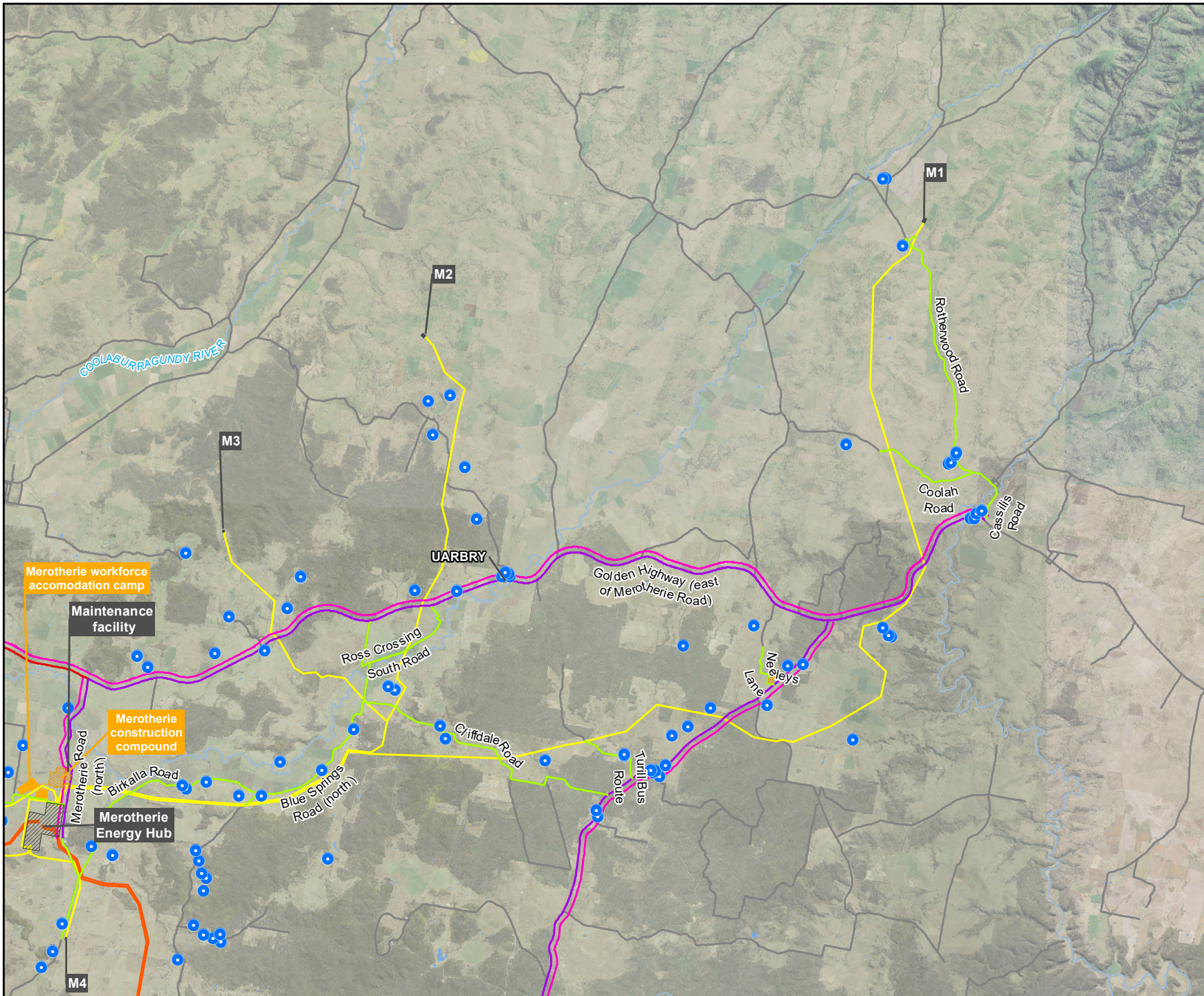


0 2 4 km
 Coordinate system: GDA2020 MGA Zone 55
 Scale ratio correct when printed at A4
 1:217,230
 Data sources: WSP, EnergyCo, NSWSS

Figure B-3
Construction routes and
peak construction volumes
Map 2 of 3

Legend

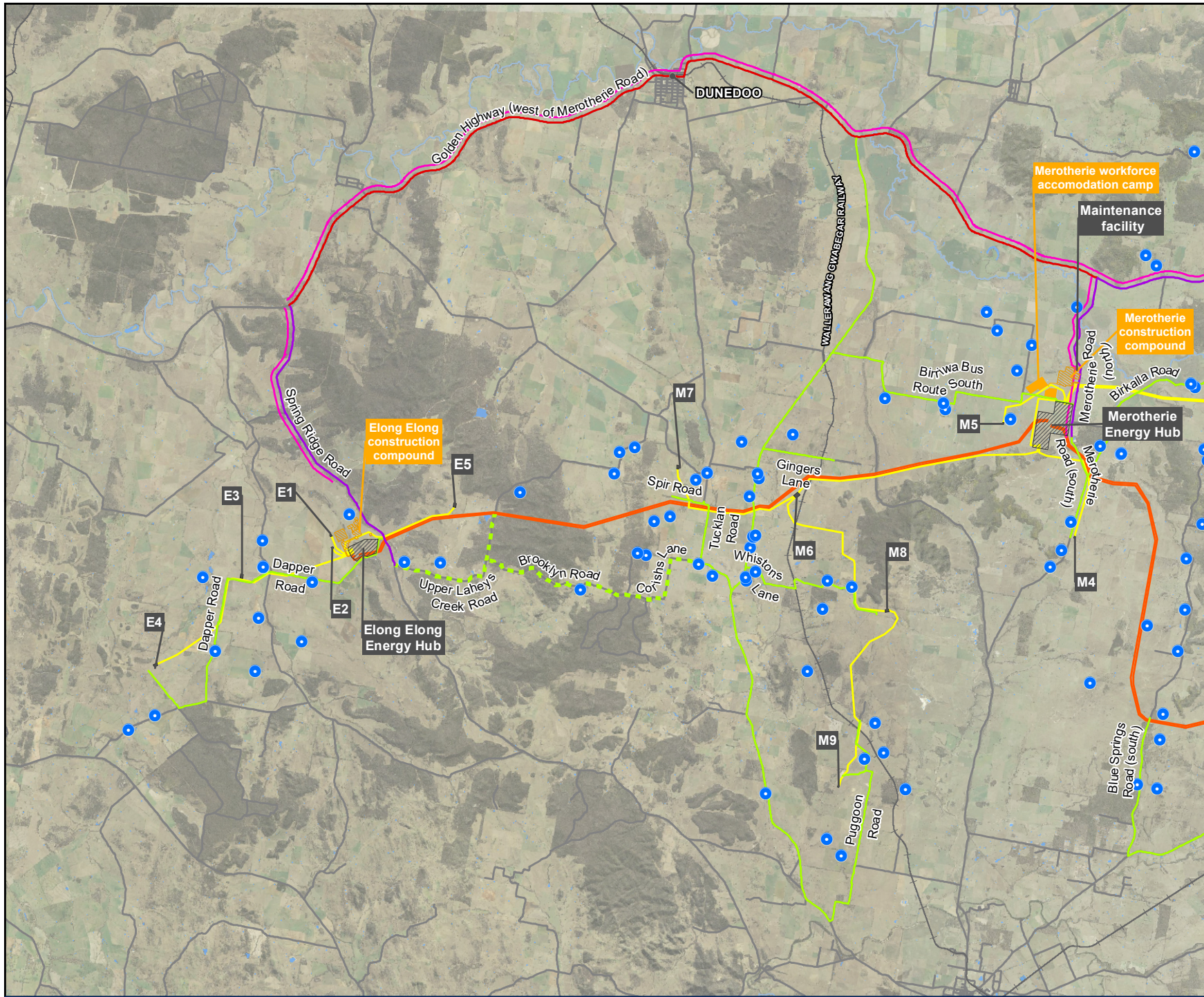
-  Energy hub / 500 kV switching station
 -  330 kV switching station
 -  500 kV transmission line
 -  330 kV transmission line
 -  Construction compound
 -  Workforce accommodation camp
 -  Road
 -  Watercourse
 -  Water body
 -  OSOM construction route
- General construction routes**
- Vehicle movements per hour (light and heavy vehicles)**
-  50
 -  75
 -  100
- Sensitive receivers**
-  House



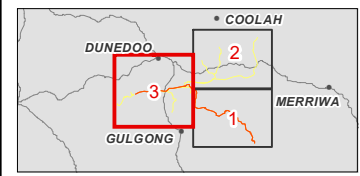
0 2 4 km

Coordinate system: GDA2020 MGA Zone 55
Scale ratio correct when printed at A4
1:217,230
Data sources: WSP, EnergyCo, NSWSS

Figure B-3
Construction routes and
peak construction volumes
Map 3 of 3



- Legend**
- Energy hub / 500 kV switching station
 - 330 kV switching station
 - 500 kV transmission line
 - 330 kV transmission line
 - Construction compound
 - Workforce accommodation camp
 - Road
 - Railway
 - Watercourse
 - Water body
 - OSOM construction route
- General construction routes**
- Vehicle movements per hour (light and heavy vehicles)**
- 50
 - 75
 - 100
- Vehicle movements per hour (light vehicles only)**
- 50
- Sensitive receivers**
- House



0 2 4 km

Coordinate system: GDA2020 MGA Zone 55
Scale ratio correct when printed at A4
1:217,230
Data sources: WSP, EnergyCo, NSWSS