

# Central-West Orana Renewable Energy Zone Transmission project

## Amendment Report

### Appendix C: Project amendments mapping

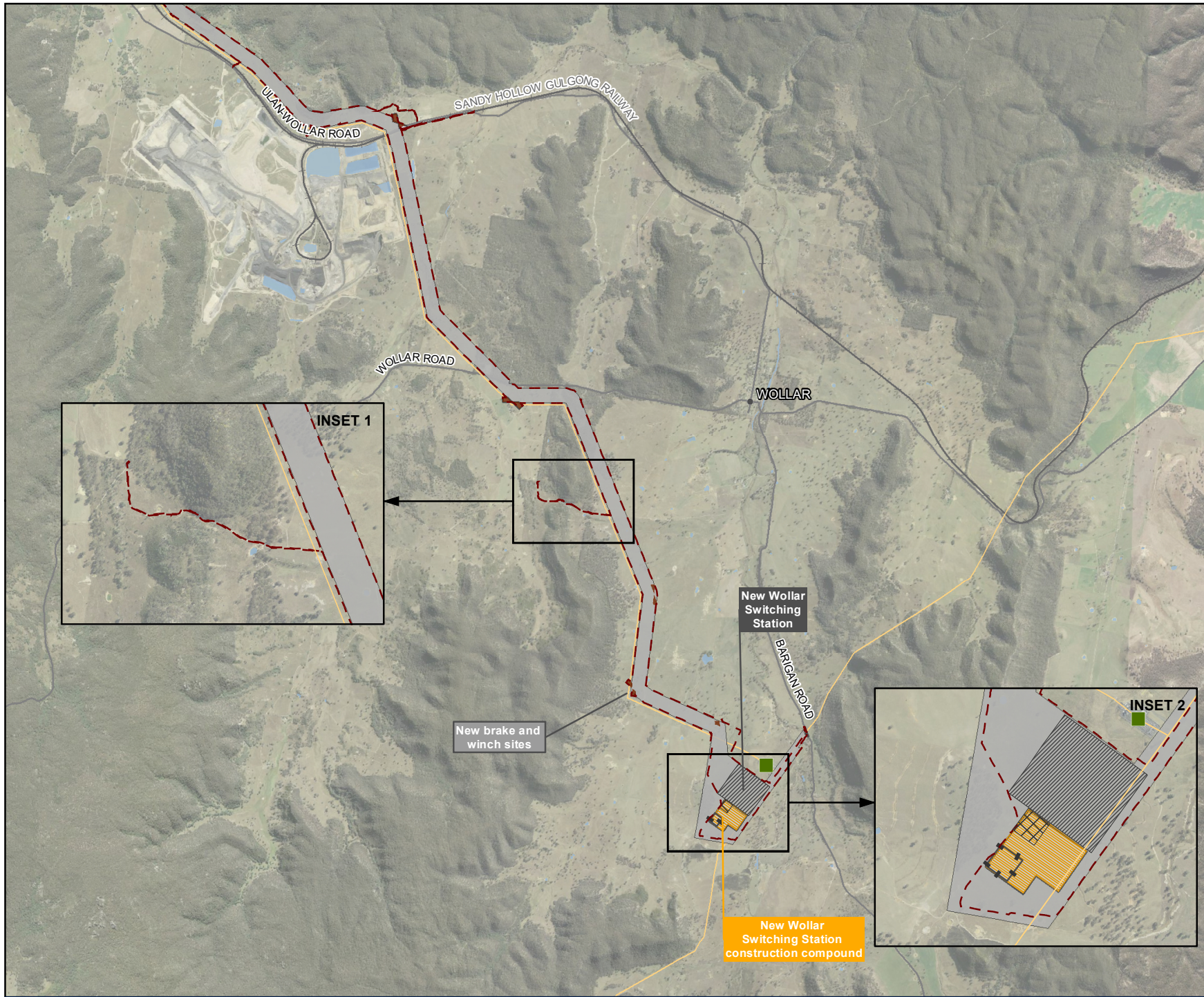
March 2024

[www.energyco.nsw.gov.au](http://www.energyco.nsw.gov.au)





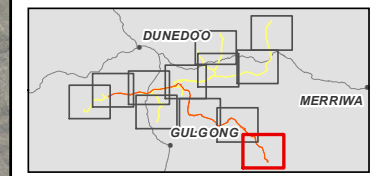
**Figure C-1**  
Project amendments - construction features  
Map 1 of 13



**Legend**

- Exhibited construction area
  - Amended construction area
  - Construction compound
  - Energy hub / 500 kV switching station
  - Brake and winch site
  - Helipad
  - Concrete batch plant
- Other features**
- Existing Transgrid Wollar Substation
  - Existing transmission line
  - Railway
  - Road
  - Water body

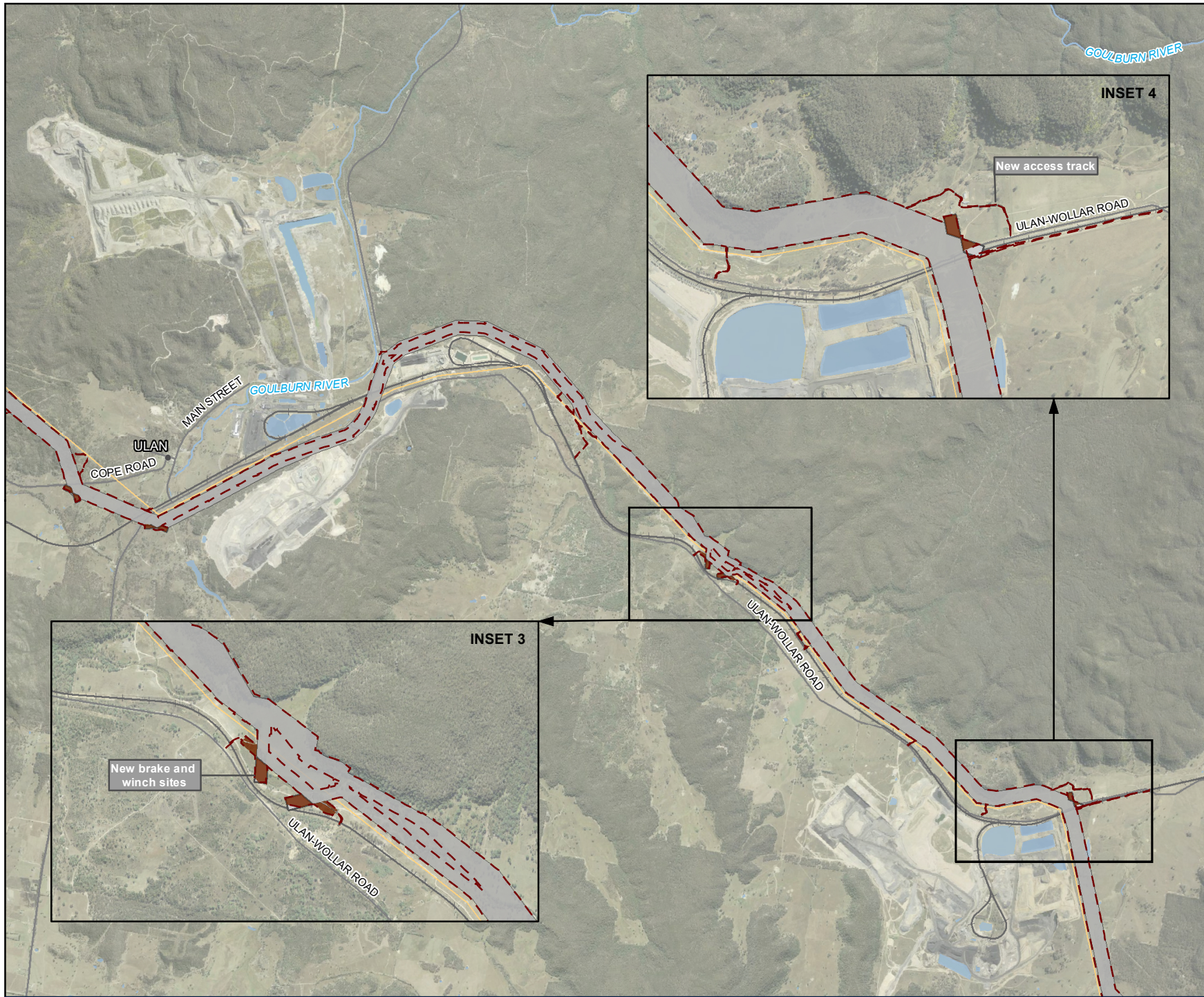
*Note: Location of construction features are indicative and would be confirmed during detailed design*



0 1 2 km  
Coordinate system: GDA2020 MGA Zone 55  
Scale ratio correct when printed at A4  
1:80,000  
Data sources: WSP, NSWSS, EnergyCo



**Figure C-1**  
Project amendments - construction features  
Map 2 of 13



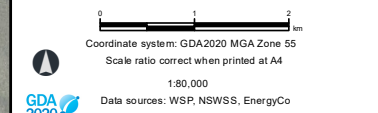
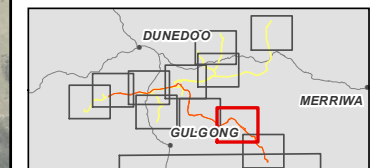
**Legend**

- █ Exhibited construction area
- █ Amended construction area
- █ Brake and winch site

**Other features**

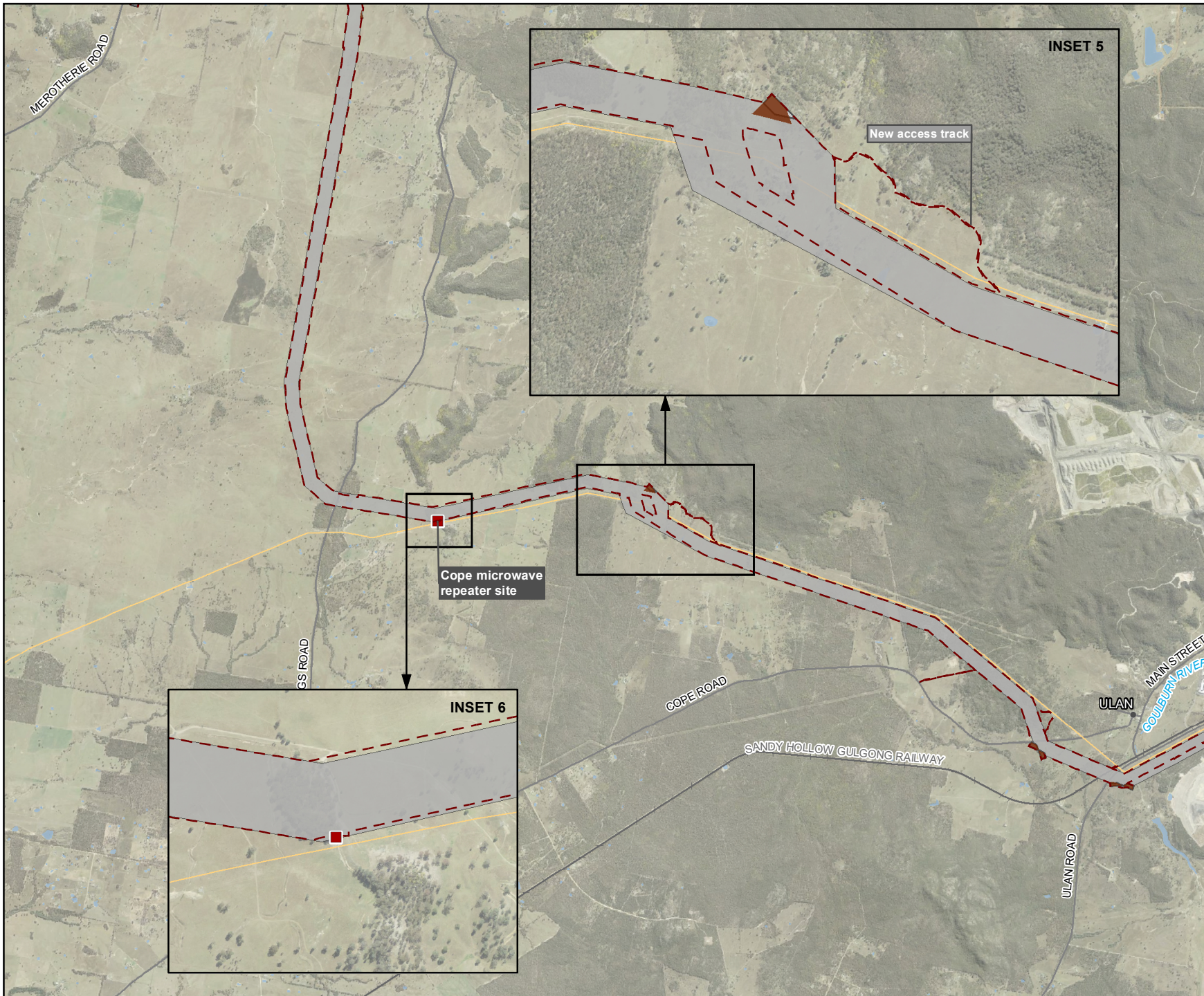
- Existing transmission line
- Railway
- Road
- Watercourse
- Water body

*Note: Location of construction features are indicative and would be confirmed during detailed design*





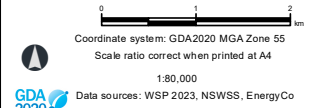
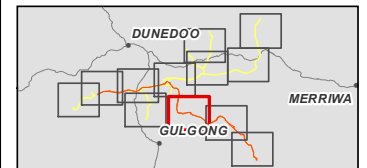
**Figure C-1**  
Project amendments - construction features  
Map 3 of 13



**Legend**

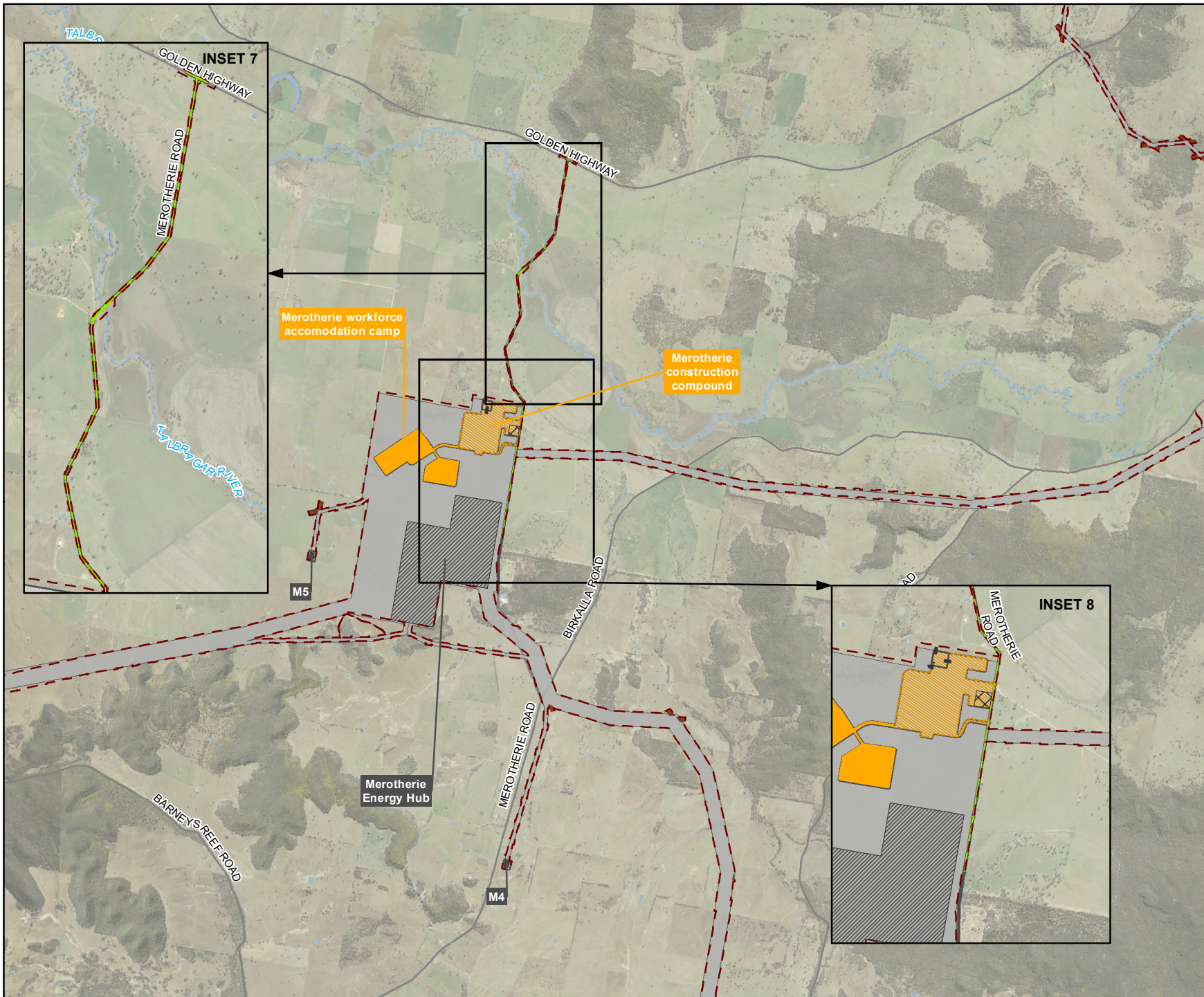
- Exhibited construction area
  - Amended construction area
  - Microwave repeater site
  - Brake and winch sites
- Other features**
- Existing transmission line
  - Railway
  - Road
  - Watercourse
  - Water body

*Note: Location of construction features are indicative and would be confirmed during detailed design*





**Figure C-1**  
Project amendments - construction features  
Map 4 of 13



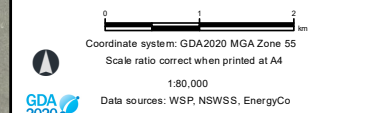
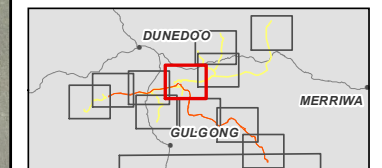
**Legend**

- Exhibited construction area
- Amended construction area
- Workforce accommodation camp
- Construction compound
- 330 kV switching station
- Energy hub / 500 kV switching station
- Brake and winch site
- Public road upgrade
- Helipad
- Concrete batch plant

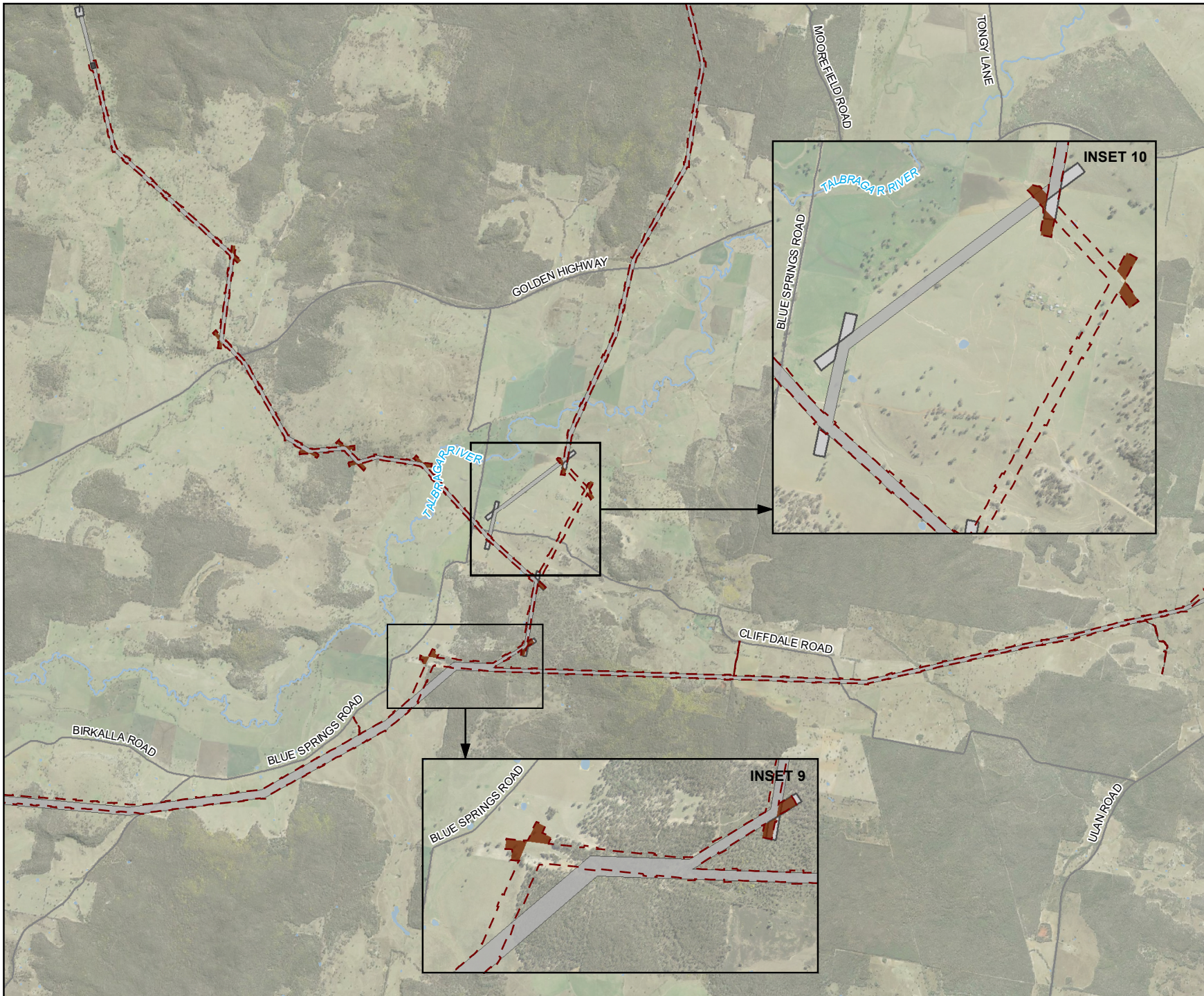
**Other features**

- Road
- Watercourse
- Water body

*Note: Location of construction features are indicative and would be confirmed during detailed design*







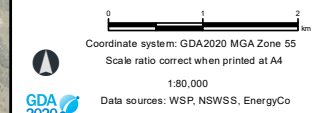
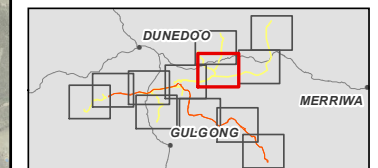
**Legend**

- Exhibited construction area
- Amended construction area
- 330 kV switching station
- Brake and winch site

**Other features**

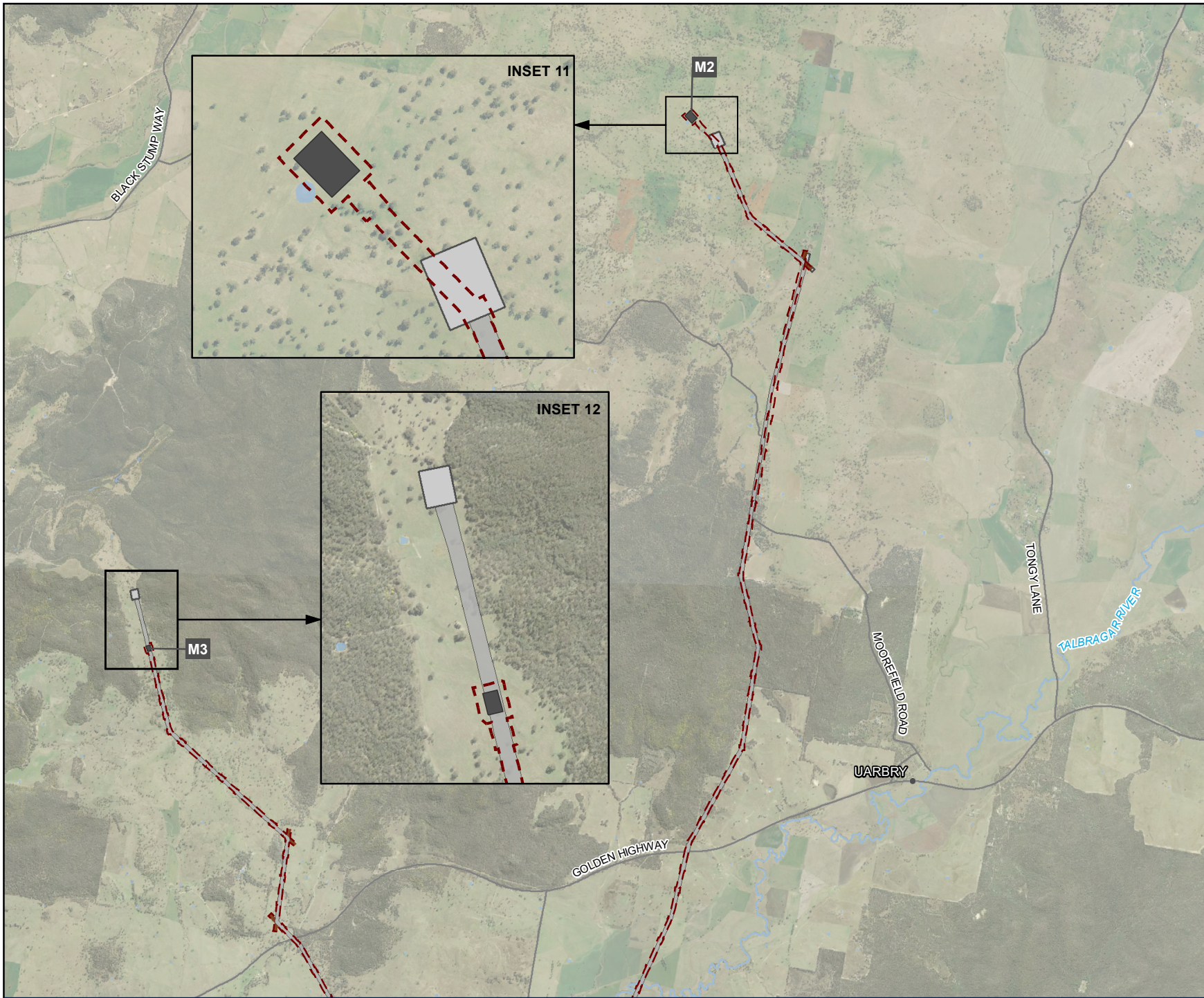
- Road
- Watercourse
- Water body

*Note: Location of construction features are indicative and would be confirmed during detailed design*





**Figure C-1**  
Project amendments - construction features  
Map 6 of 13



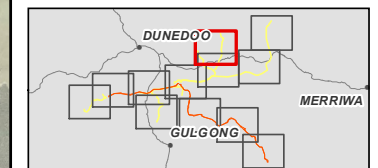
**Legend**

- Exhibited construction area
- Amended construction area
- 330 kV switching station
- Brake and winch site

**Other features**

- Road
- Watercourse
- Water body

*Note: Location of construction features are indicative and would be confirmed during detailed design*

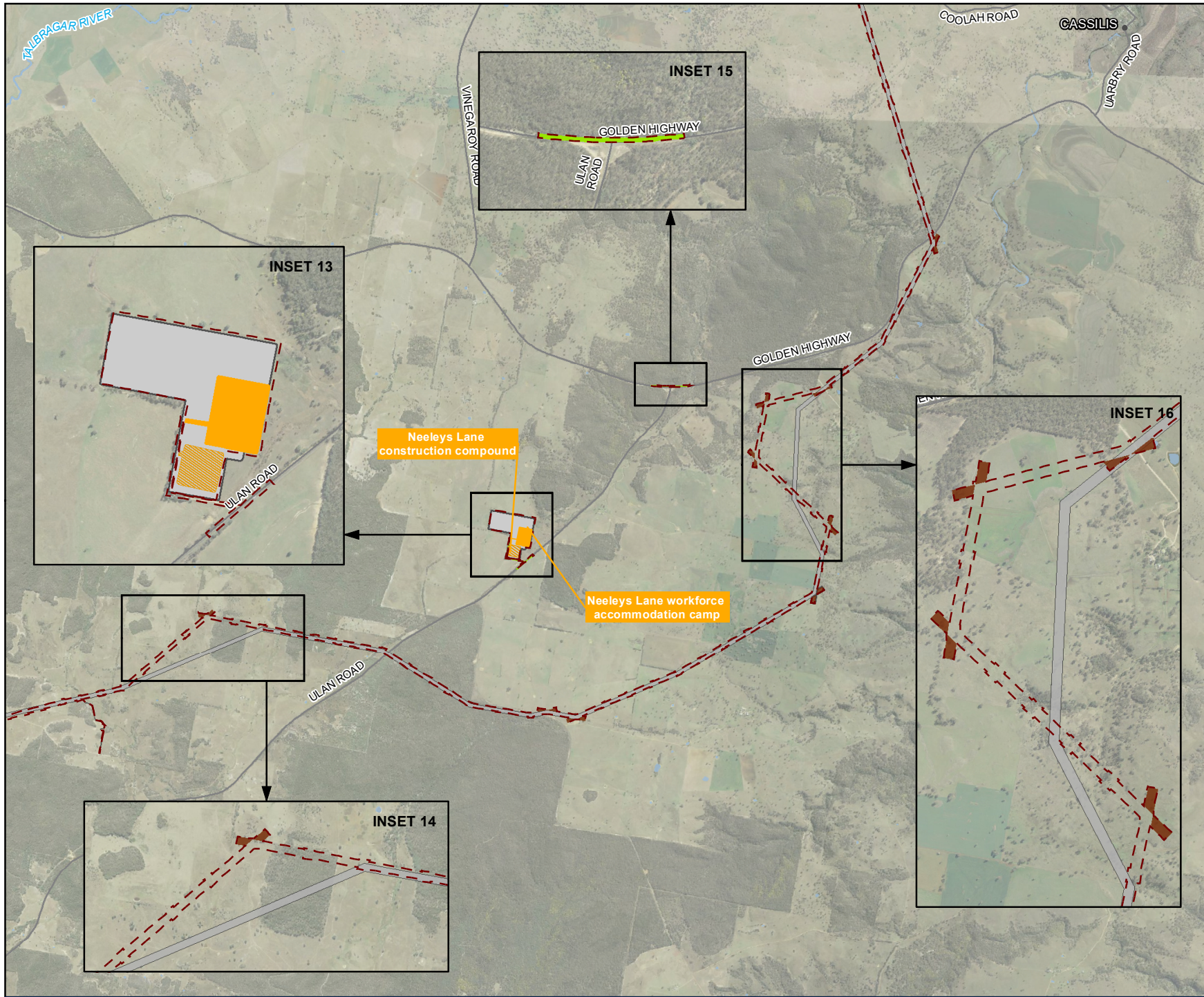


0 1 2 km  
Coordinate system: GDA2020 MGA Zone 55  
Scale ratio correct when printed at A4  
1:80,000  
Data sources: WSP, NSWSS, EnergyCo





**Figure C-1**  
Project amendments - construction features  
Map 7 of 13



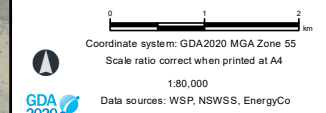
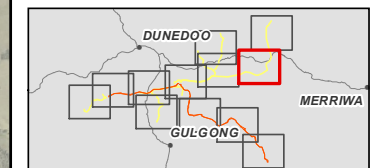
**Legend**

- Exhibited construction area
- Amended construction area
- Construction compound
- Workforce accommodation camp
- Brake and winch site
- Public road upgrade

**Other features**

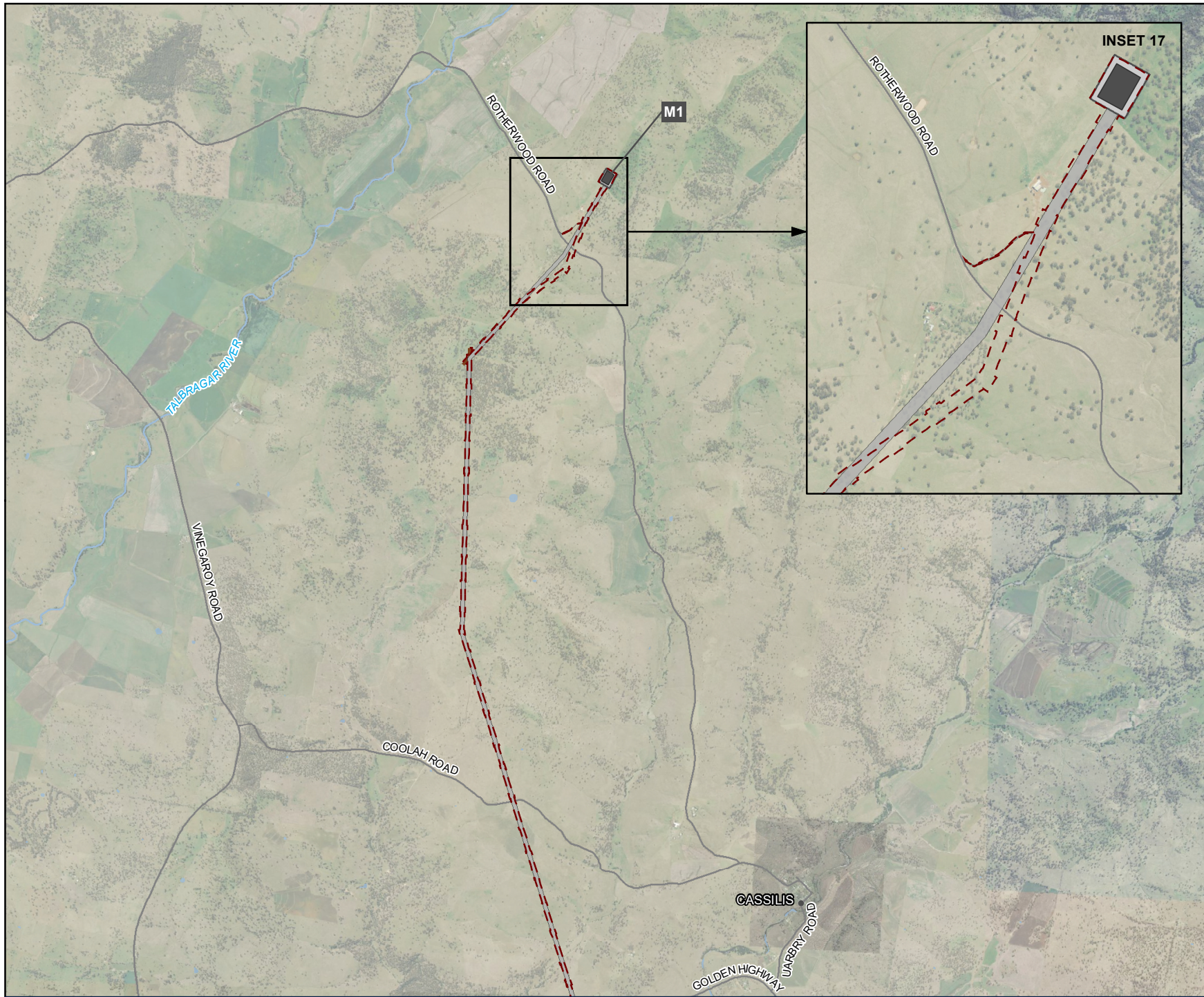
- Road
- Watercourse
- Water body

*Note: Location of construction features are indicative and would be confirmed during detailed design*





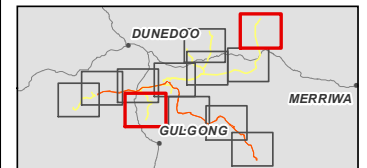
**Figure C-1**  
Project amendments - construction features  
Map 8 of 13



**Legend**

- Exhibited construction area
  - Amended construction area
  - 330 kV switching station
  - Brake and winch site
- Other features**
- Road
  - Watercourse
  - Water body

*Note: Location of construction features are indicative and would be confirmed during detailed design*



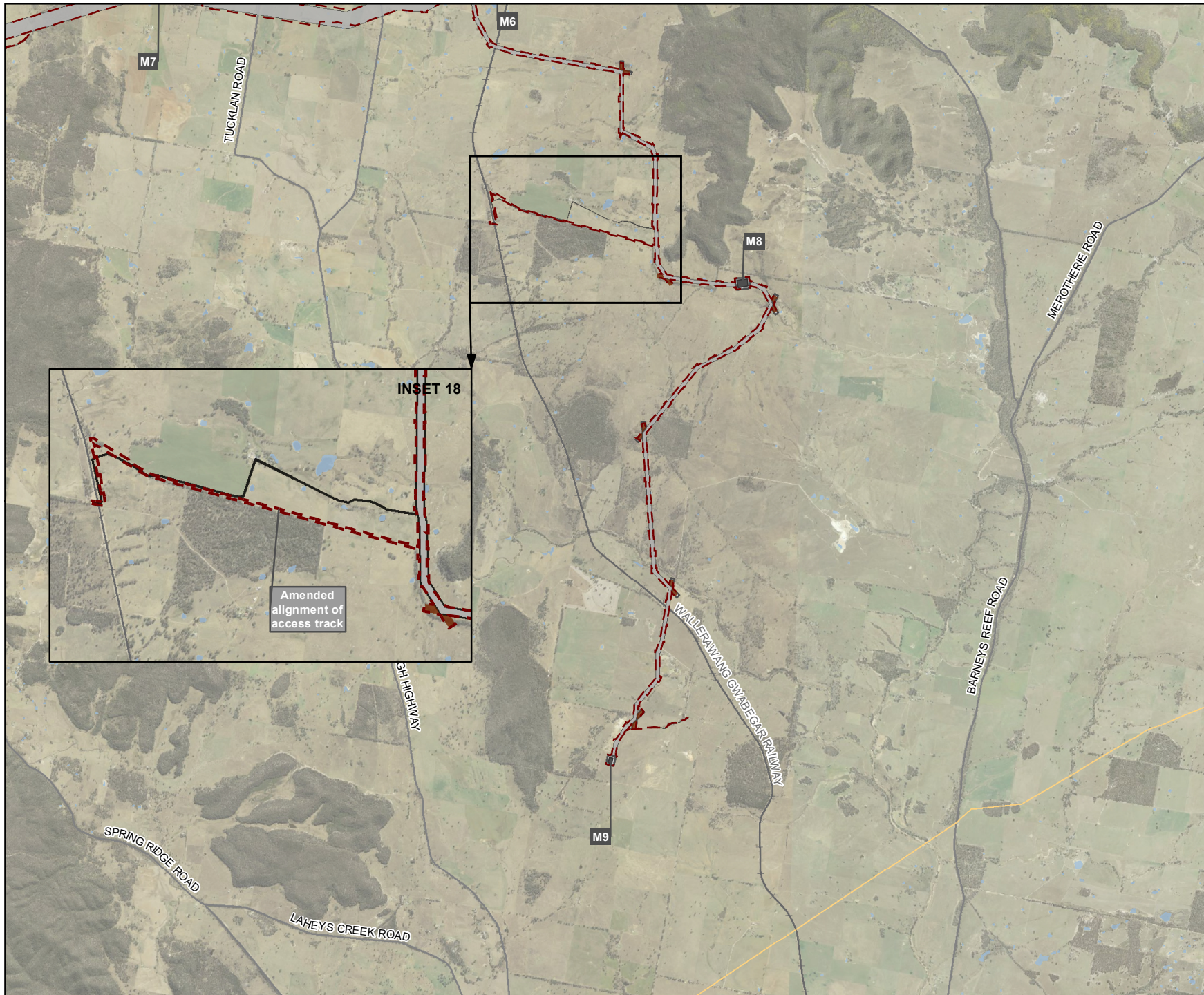
0 1 2 km  
Coordinate system: GDA2020 MGA Zone 55  
Scale ratio correct when printed at A4



1:80,000  
Data sources: WSP, NSWSS, EnergyCo



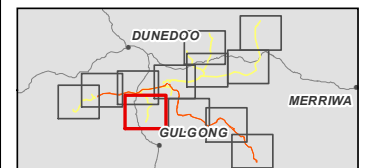
**Figure C-1**  
Project amendments - construction features  
Map 9 of 13



**Legend**

- Exhibited construction area
- Amended construction area
- 330 kV switching station
- Brake and winch site
- Other features**
- Existing transmission line
- Railway
- Road
- Water body

*Note: Location of construction features are indicative and would be confirmed during detailed design*



0 1 2 km  
Coordinate system: GDA2020 MGA Zone 55  
Scale ratio correct when printed at A4



1:80,000  
Data sources: WSP, NSWSS, EnergyCo



**Figure C-1**  
Project amendments - construction features  
Map 10 of 13

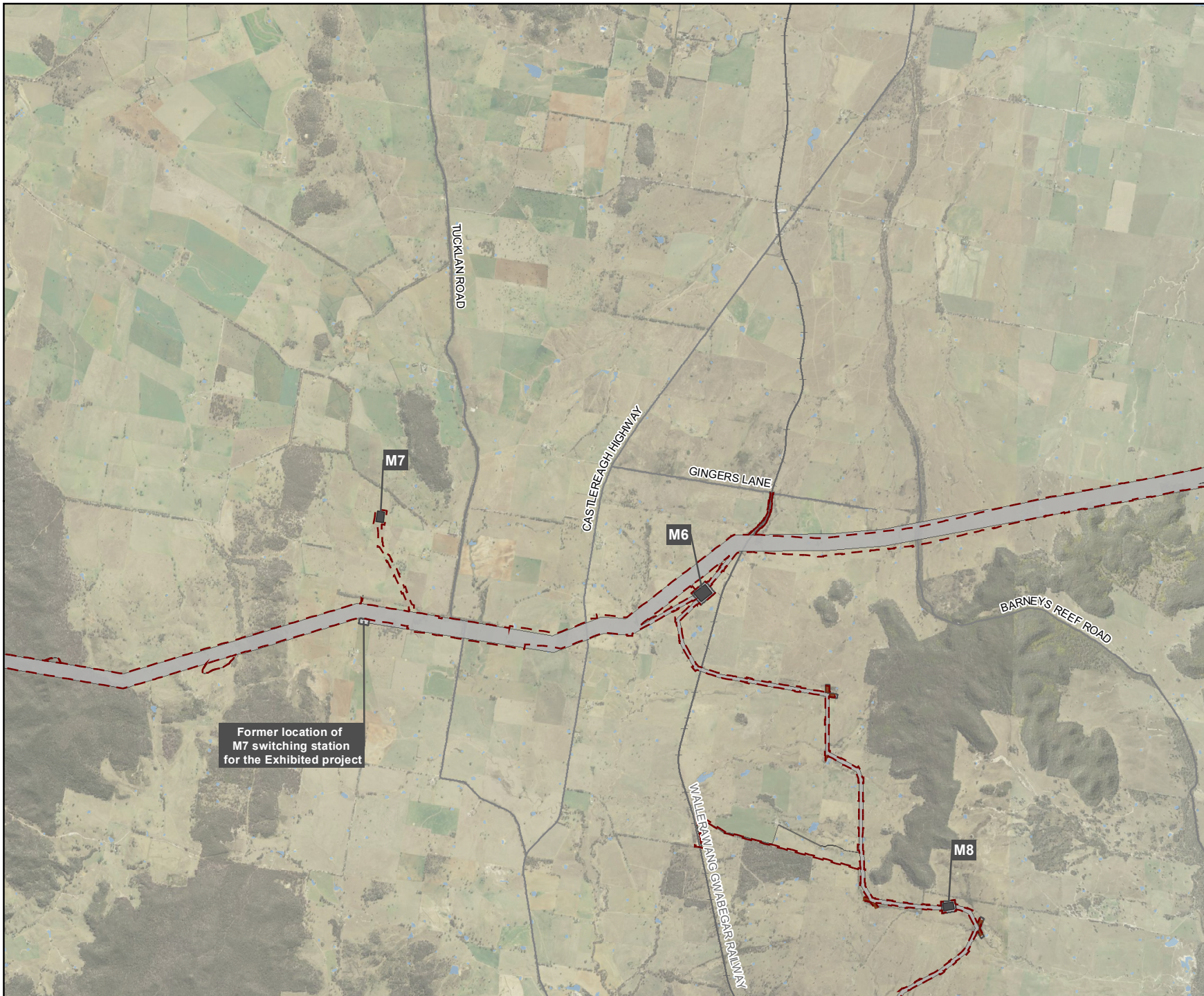
**Legend**

- Exhibited construction area
- Amended construction area
- 330 kV switching station
- Brake and winch site

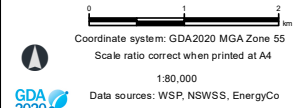
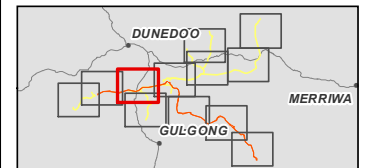
**Other features**

- Railway
- Road
- Watercourse
- Water body

*Note: Location of construction features are indicative and would be confirmed during detailed design*



Former location of M7 switching station for the Exhibited project





GOLDEN HIGHWAY

INSET 20

SPRING RIDGE ROAD

DAPPER ROAD

Elong Elong construction compound

New brake and winch sites

E1

E2

E5

Elong Elong Energy Hub

DAPPER ROAD

INSET 21

INSET 19

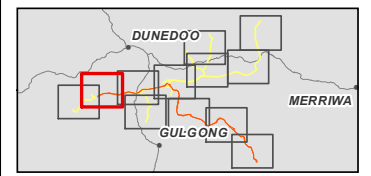
DAPPER ROAD

Figure C-1  
Project amendments - construction features  
Map 11 of 13

Legend

- Exhibited construction area
  - Amended construction area
  - Construction compound
  - Energy hub / 500 kV switching station
  - 330 kV switching station
  - Brake and winch site
  - Public road upgrade
  - Helipad
  - Concrete batch plant
- Other features**
- Road
  - Watercourse
  - Water body

Note: Location of construction features are indicative and would be confirmed during detailed design

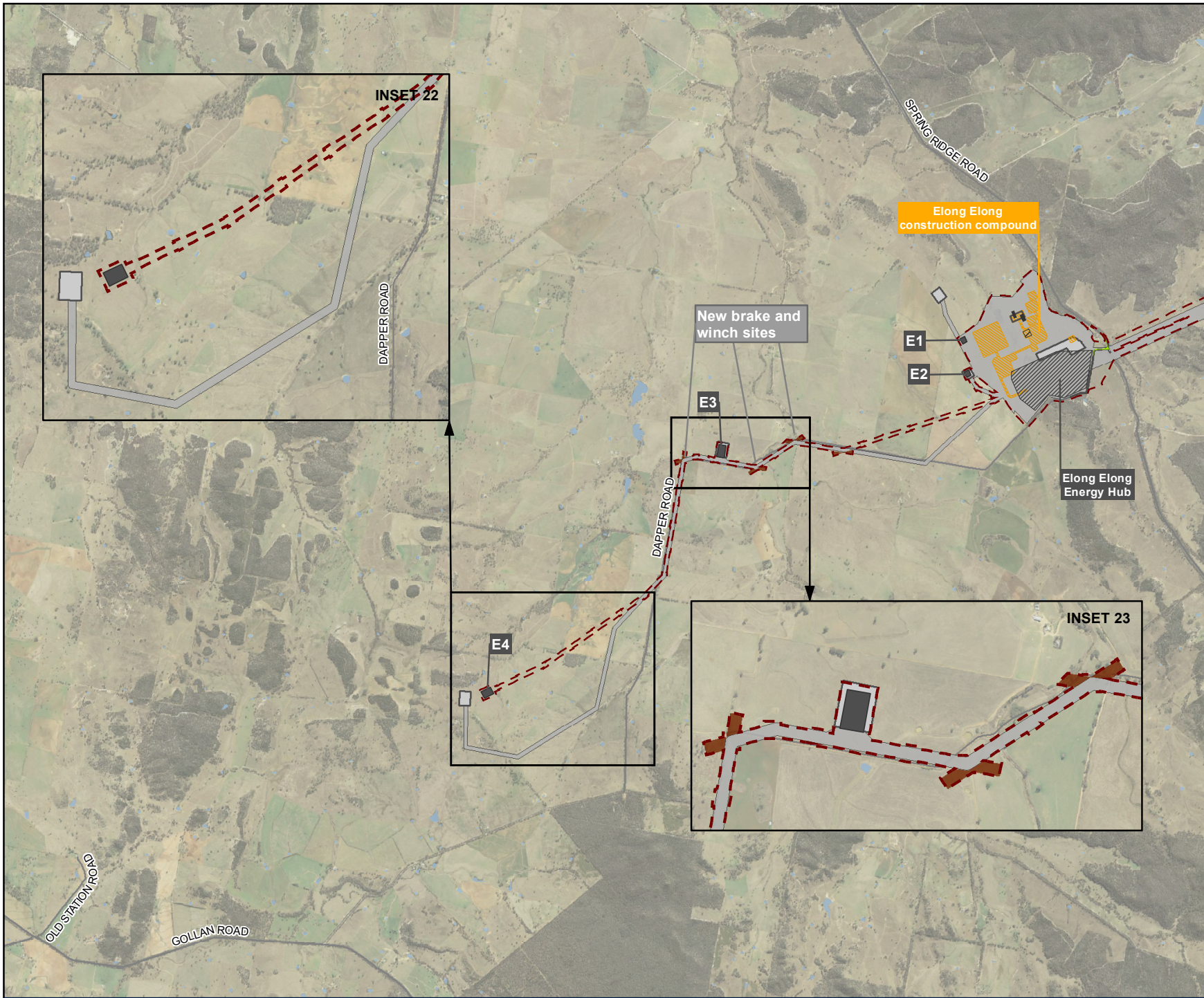


0 1 2 km

Coordinate system: GDA2020 MGA Zone 55  
Scale ratio correct when printed at A4  
1:80,000  
Data sources: WSP, NSWSS, EnergyCo



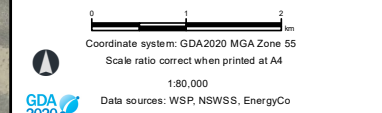
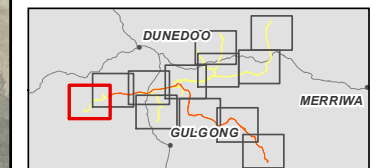
**Figure C-1**  
Project amendments - construction features  
Map 12 of 13



**Legend**

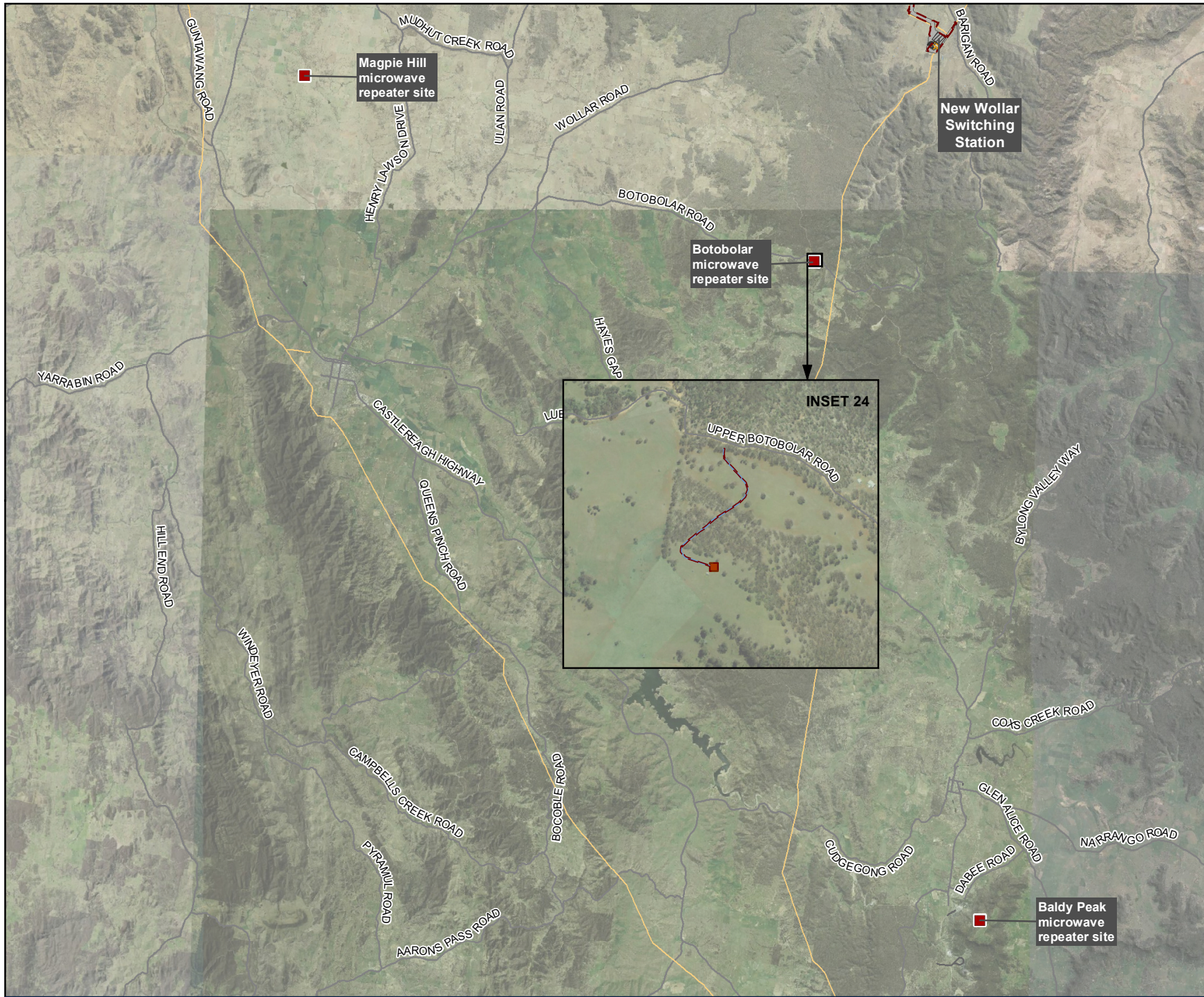
- Exhibited construction area
  - Amended construction area
  - Construction compound
  - Energy hub / 500 kV switching station
  - 330 kV switching station
  - Brake and winch site
  - Public road upgrade
  - Helipad
  - Concrete batch plant
- Other features**
- Road
  - Water body

*Note: Location of construction features are indicative and would be confirmed during detailed design*





**Figure C-1**  
Project amendments - construction features  
Map 13 of 13



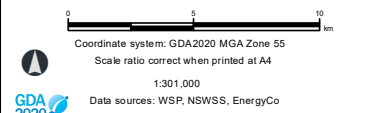
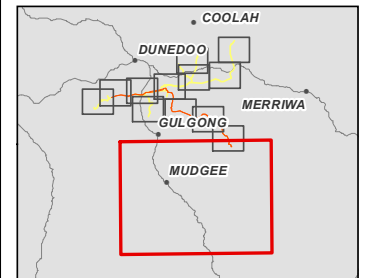
**Legend**

- Exhibited construction area
- Amended construction area
- Construction compound
- Energy hub / 500 kV switching station
- Microwaver repeater site
- Brake and winch site
- Access road
- Helipad
- Concrete batch plant

**Other features**

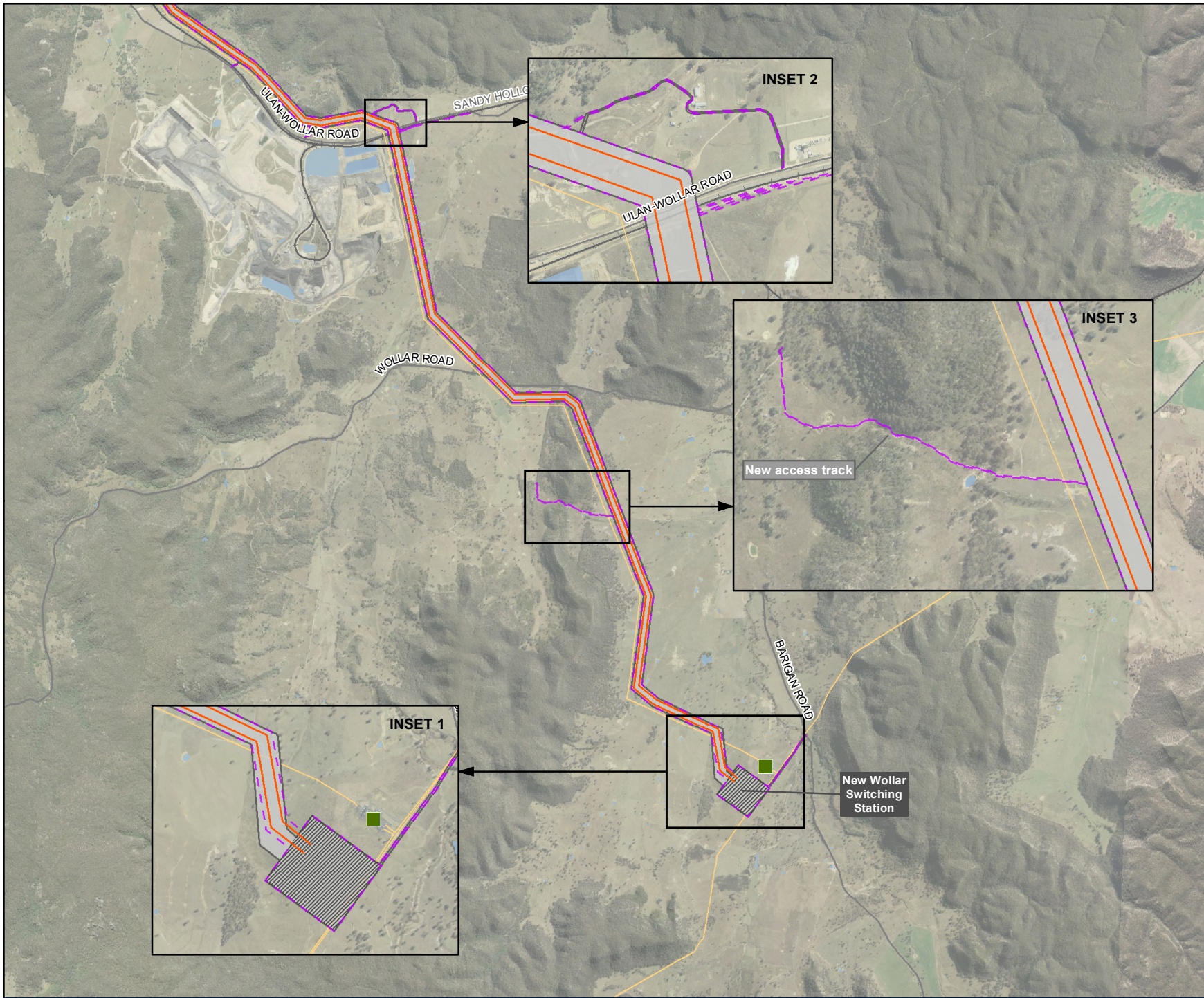
- Existing transmission line
- Railway
- Road
- Water body

*Note: Location of construction features are indicative and would be confirmed during detailed design*

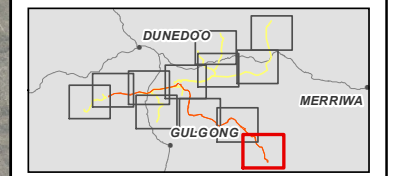




**Figure C-2**  
Project amendments – operational features  
Map 1 of 13



- Legend**
- Exhibited operation area
  - Amended operation area
  - Energy hub / 500 kV switching station
  - 500 kV transmission line
- Other features**
- Existing Transgrid Wollar Substation
  - Existing transmission line
  - Railway
  - Road
  - Water body

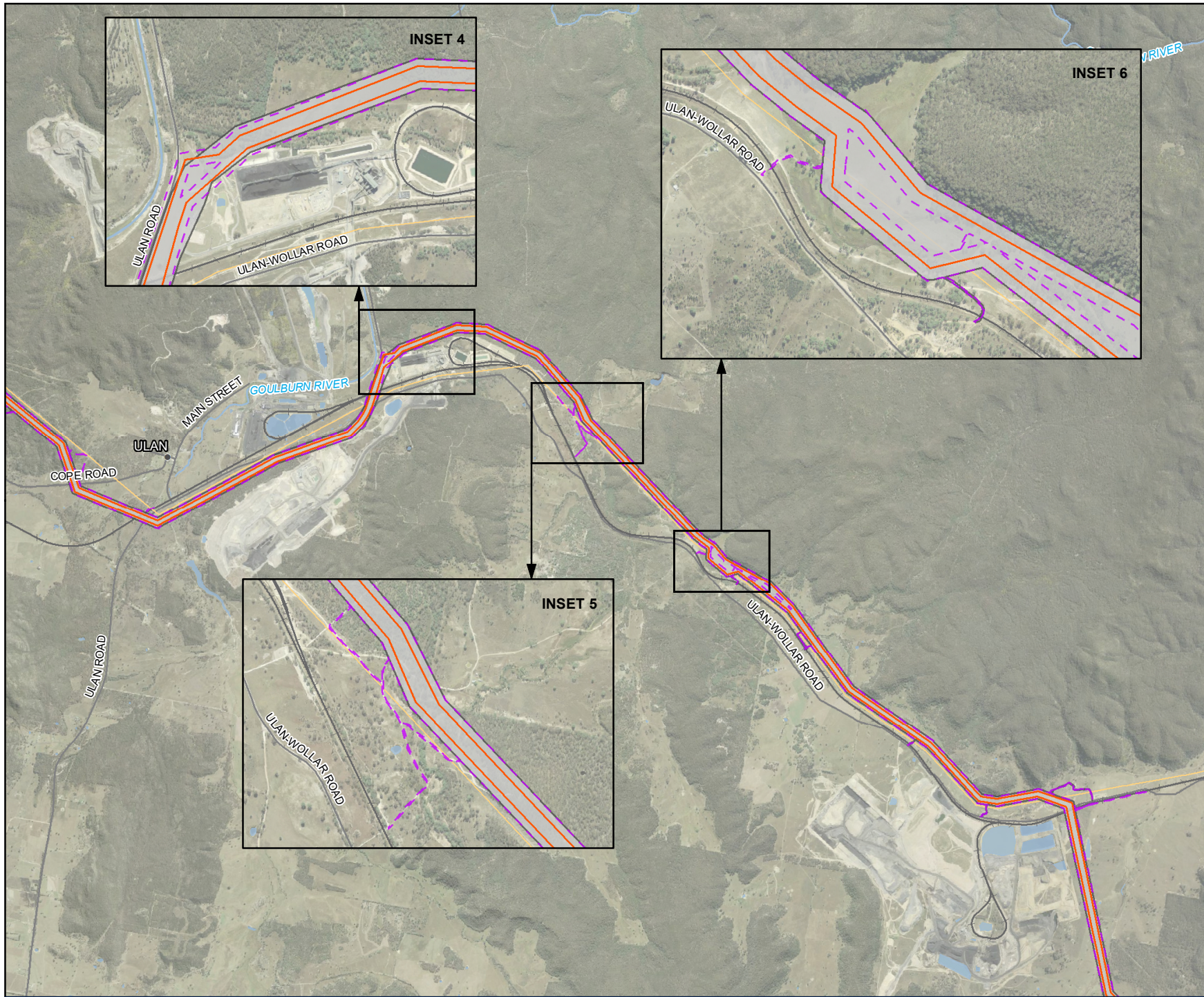


0 1 2 km

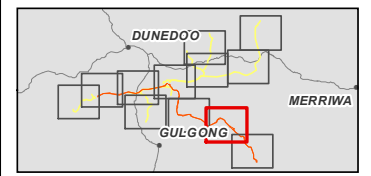
Coordinate system: GDA2020 MGA Zone 55  
Scale ratio correct when printed at A4  
1:80,000  
Data sources: WSP, NSWSS, EnergyCo



**Figure C-2**  
Project amendments – operational features  
Map 2 of 13



- Legend**
- Exhibited operation area
  - Amended operation area
  - 500 kV transmission line
- Other features**
- Existing transmission line
  - Railway
  - Road
  - Watercourse
  - Water body



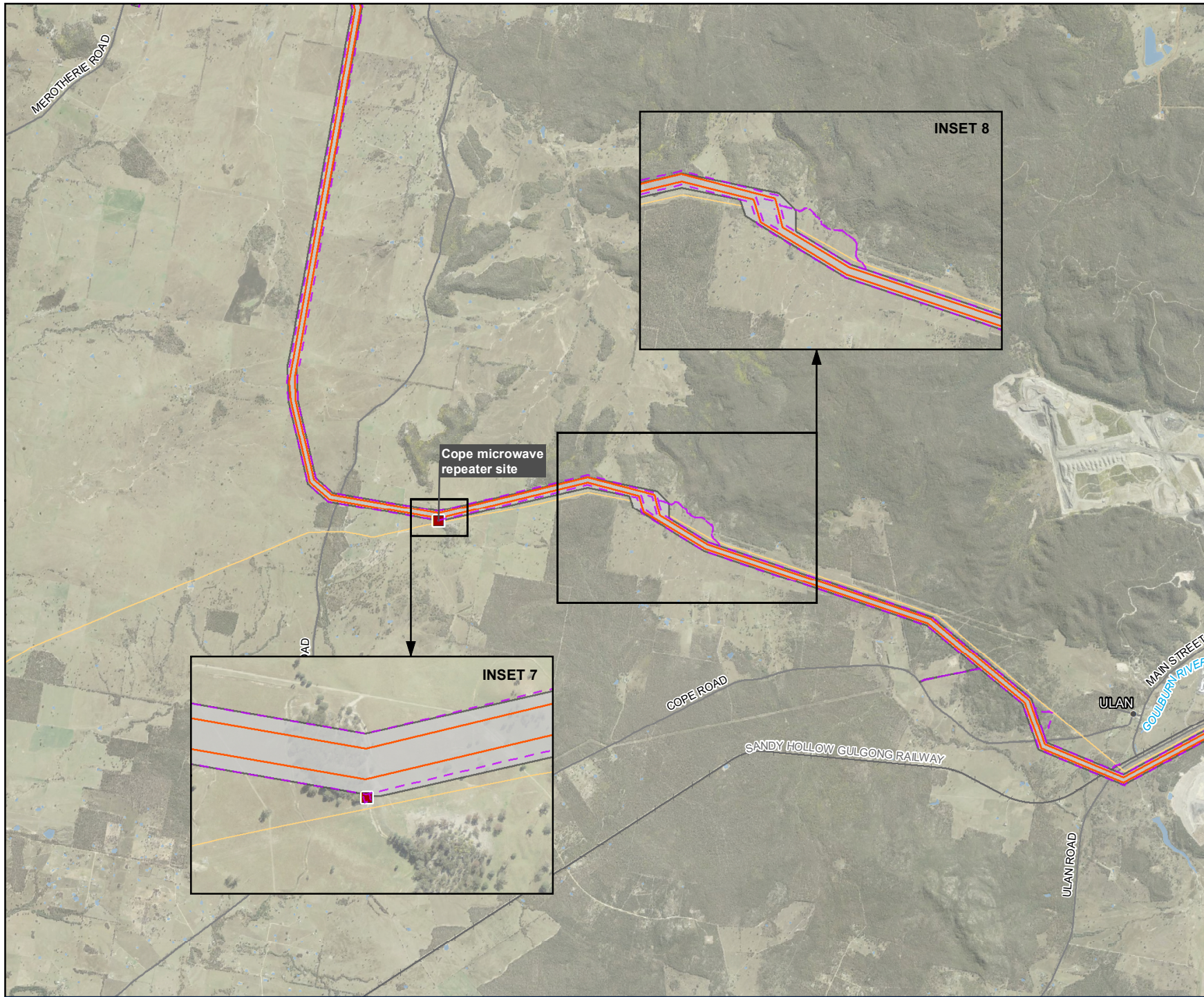
0 1 2 km

Coordinate system: GDA2020 MGA Zone 55  
Scale ratio correct when printed at A4

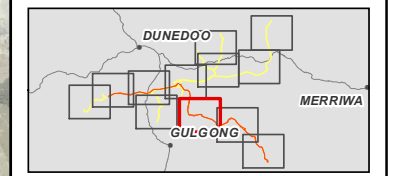
1:80,000  
Data sources: WSP, NSWSS, EnergyCo



**Figure C-2**  
Project amendments – operational features  
Map 3 of 13



- Legend**
- █ Exhibited operation area
  - █ Amended operation area
  - █ 330 kV switching station
  - █ 500 kV transmission line
  - █ Microwave repeater site
- Other features**
- Existing transmission line
  - Railway
  - Road
  - Watercourse
  - █ Water body



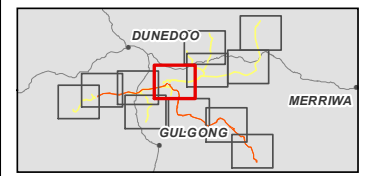
0 1 2 km  
Coordinate system: GDA2020 MGA Zone 55  
Scale ratio correct when printed at A4  
1:80,000  
Data sources: WSP, NSWSS, EnergyCo



**Figure C-2**  
Project amendments – operational features  
Map 4 of 13



- Legend**
- Exhibited operation area
  - Amended operation area
  - Energy hub / 500 kV switching station
  - Maintenance facility
  - 330 kV switching station
  - 500 kV transmission line
  - 330 kV transmission line
- Other features**
- Road
  - Watercourse
  - Water body



0 1 2 km

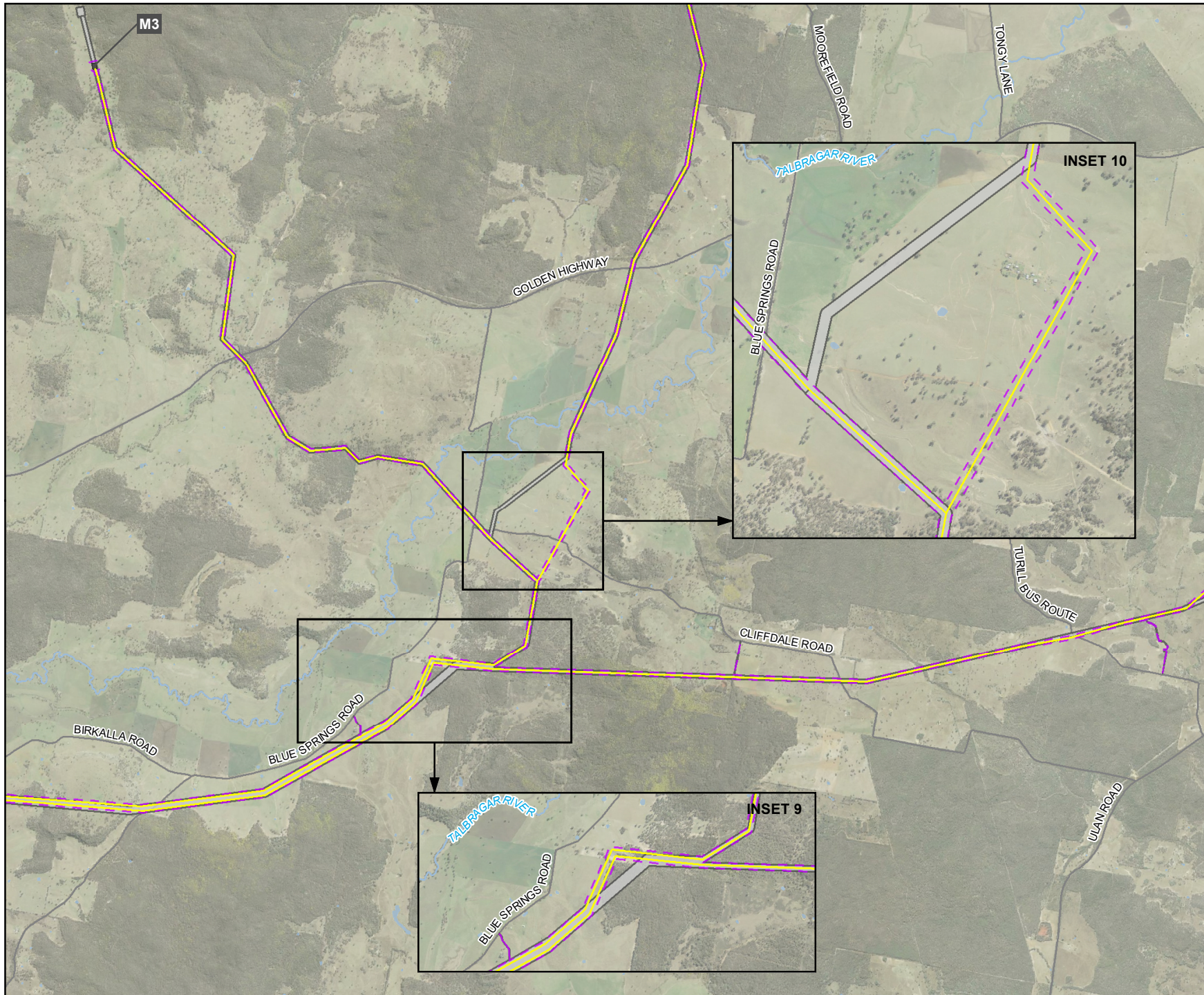
Coordinate system: GDA2020 MGA Zone 55  
Scale ratio correct when printed at A4

1:80,000





Data sources: WSP, NSWSS, EnergyCo






**Figure C-2**  
Project amendments – operational features  
Map 5 of 13

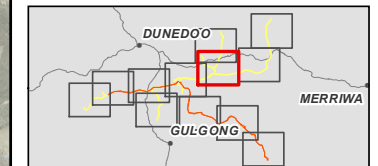


**Legend**

-  Exhibited operation area
-  Amended operation area
-  330 kV switching station
-  330 kV transmission line

**Other features**

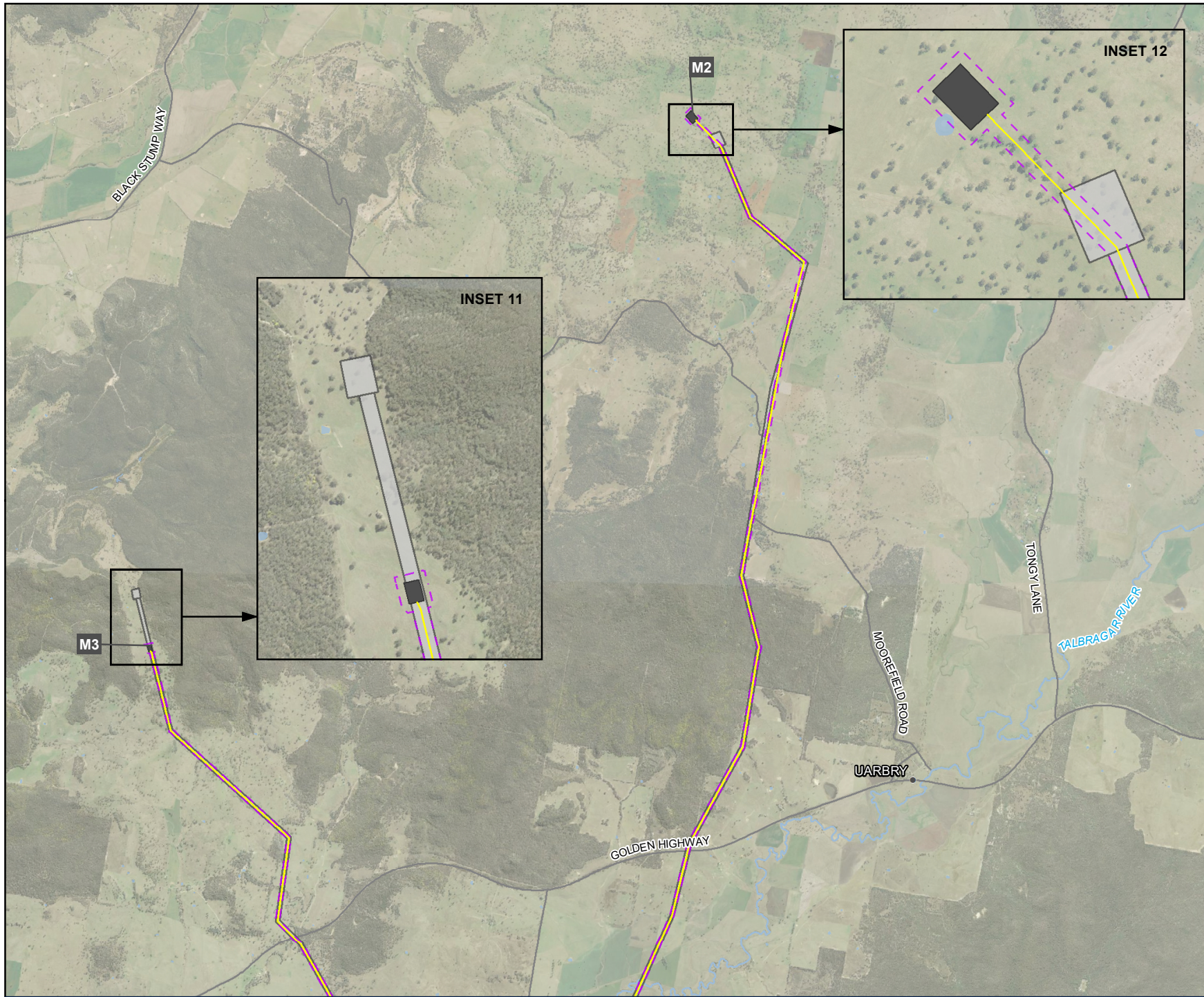
-  Road
-  Watercourse
-  Water body



Coordinate system: GDA2020 MGA Zone 55  
Scale ratio correct when printed at A4  
1:80,000  
Data sources: WSP, NSWSS, EnergyCo

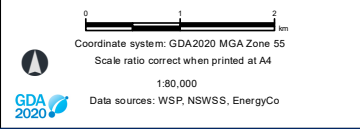
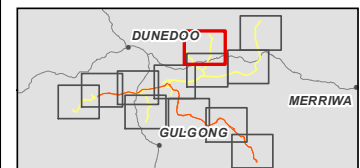


**Figure C-2**  
Project amendments – operational features  
Map 6 of 13



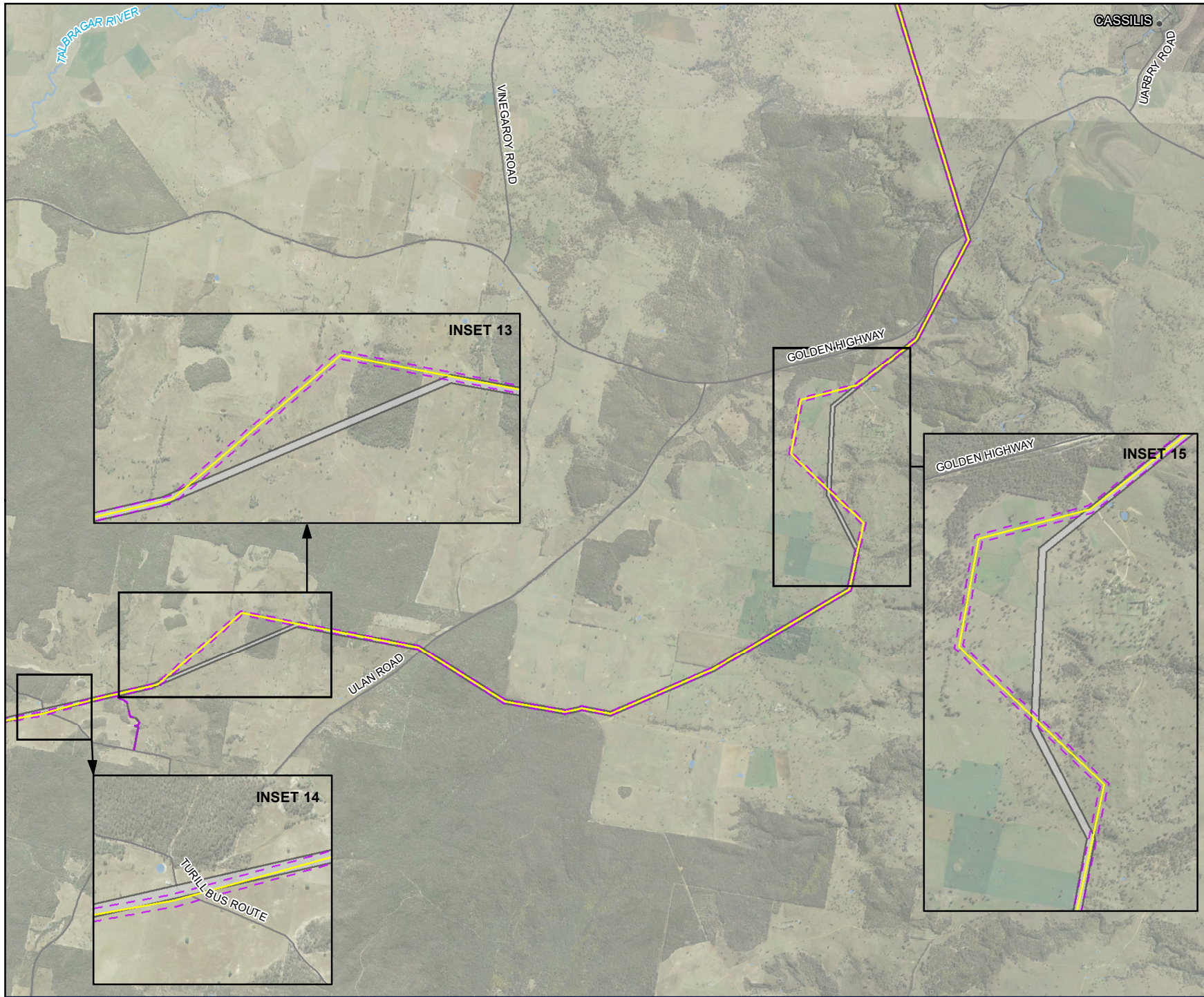
**Legend**

- Exhibited operation area
  - Amended operation area
  - 330 kV switching station
  - 330 kV transmission line
- Other features**
- Road
  - Watercourse
  - Water body

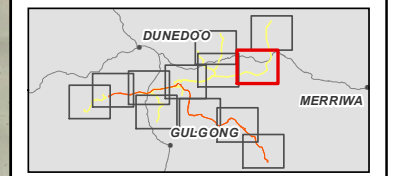





**Figure C-2**  
Project amendments – operational features  
Map 7 of 13



- Legend**
- Exhibited operation area
  - Amended operation area
  - 330 kV transmission line
- Other features**
- Road
  - Watercourse
  - Water body

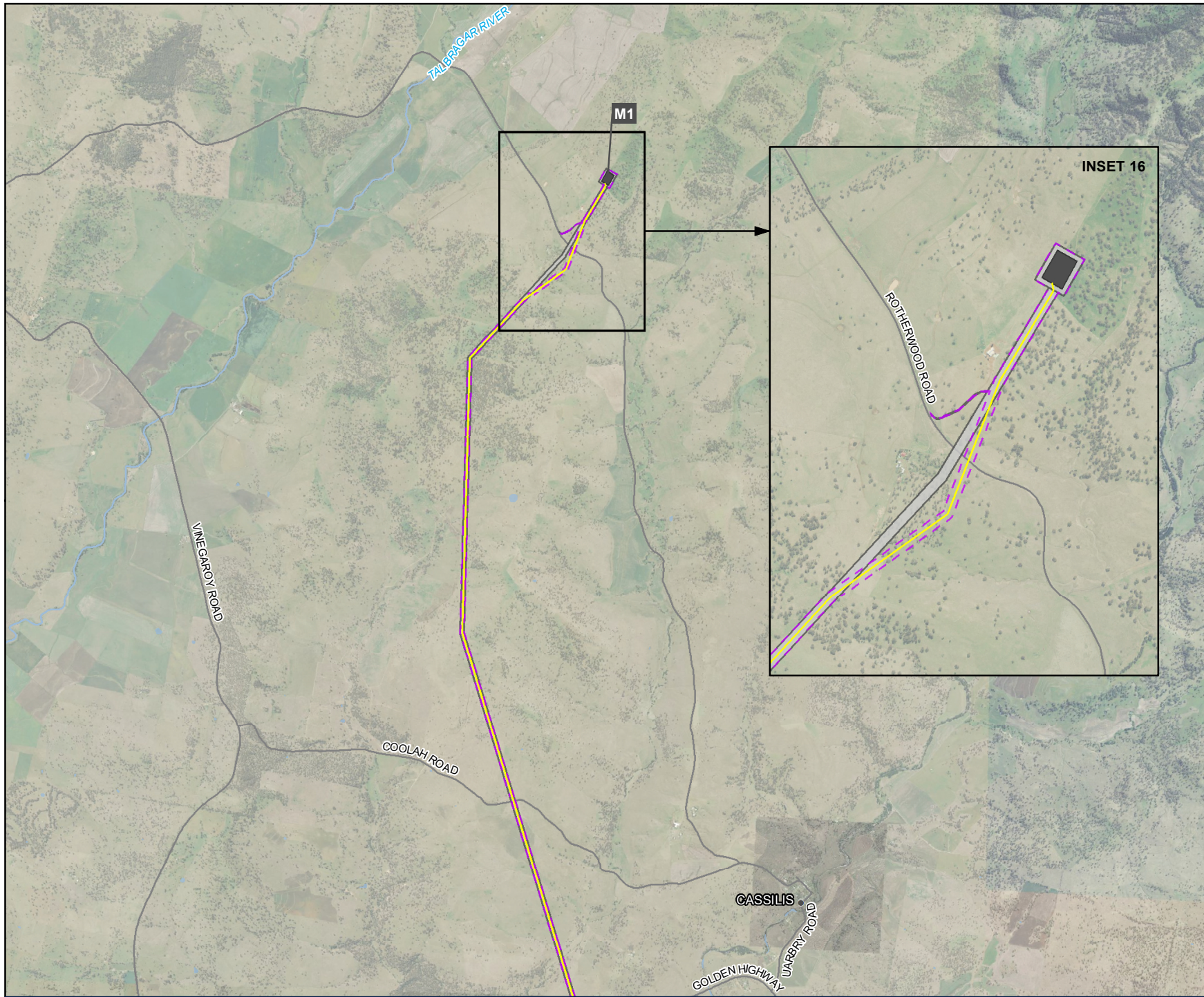


0 1 2 km  
Coordinate system: GDA2020 MGA Zone 55  
Scale ratio correct when printed at A4  
1:80,000  
Data sources: WSP, NSWSS, EnergyCo





**Figure C-2**  
Project amendments – operational features  
Map 8 of 13

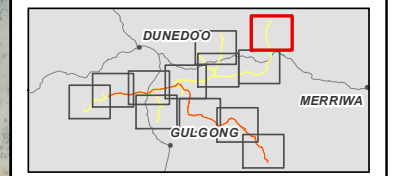


**Legend**

- Exhibited operation area
- Amended operation area
- 330 kV switching station
- 330 kV transmission line

**Other features**

- Road
- Watercourse
- Water body



0 1 2 km

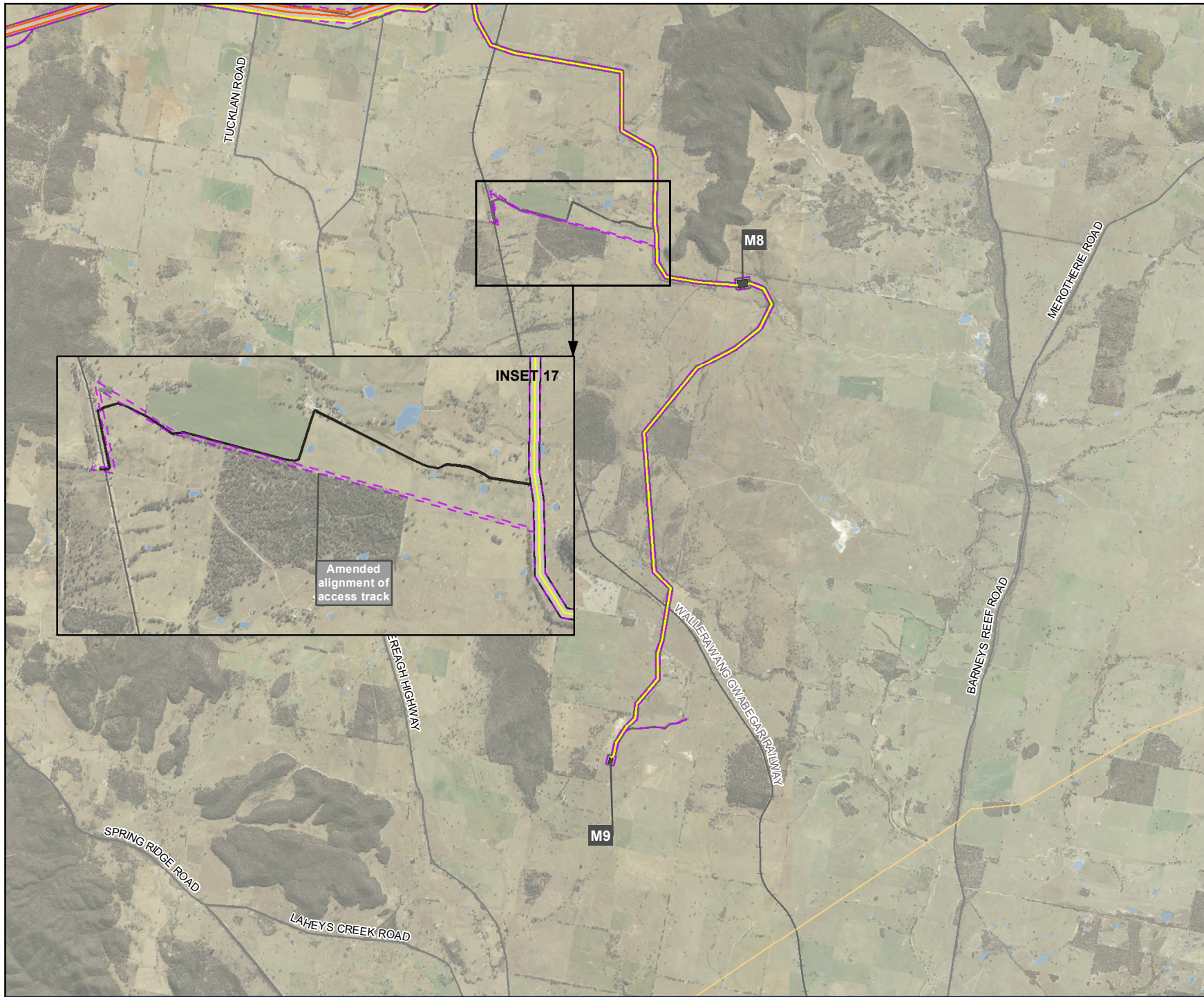
Coordinate system: GDA2020 MGA Zone 55  
Scale ratio correct when printed at A4

1:80,000

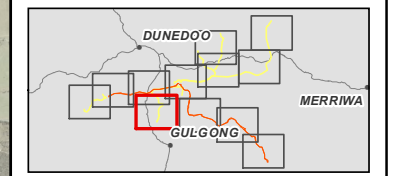
Data sources: WSP, NSWSS, EnergyCo



**Figure C-2**  
Project amendments – operational features  
Map 9 of 13



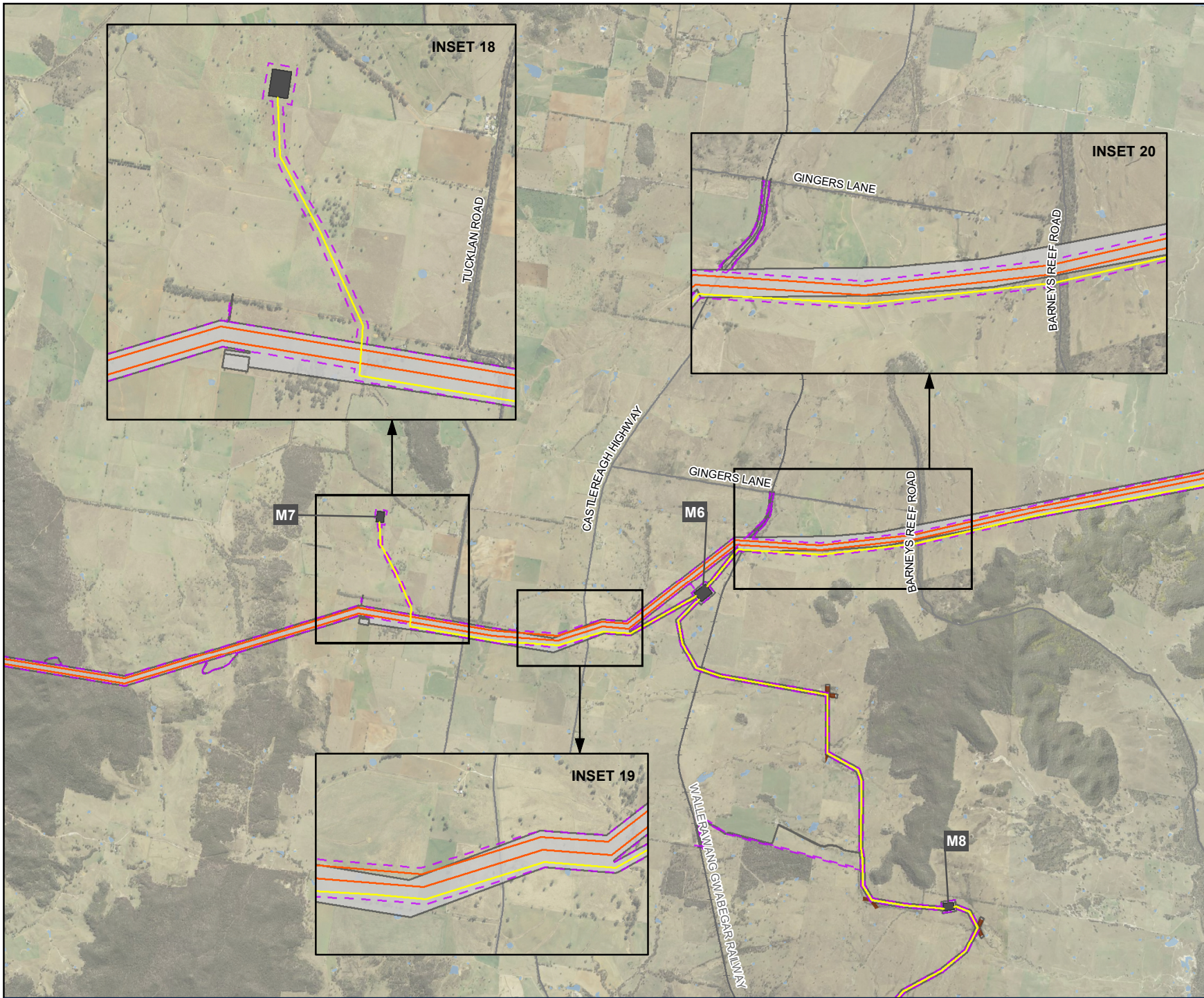
- Legend**
- █ Exhibited operation area
  - ▭ Amended operation area
  - 330 kV switching station
  - 500 kV transmission line
  - 330 kV transmission line
- Other features**
- Existing transmission line
  - Railway
  - Road
  - Water body



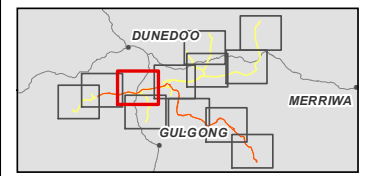
0 1 2 km  
Coordinate system: GDA2020 MGA Zone 55  
Scale ratio correct when printed at A4  
1:80,000  
Data sources: WSP, NSWSS, EnergyCo



**Figure C-2**  
Project amendments – operational features  
Map 10 of 13



- Legend**
- Exhibited operation area
  - Amended operation area
  - 330 kV switching station
  - 500 kV transmission line
  - 330 kV transmission line
  - Brake and winch site
- Other features**
- Railway
  - Road
  - Watercourse
  - Water body












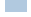
0 1 2 km  
Coordinate system: GDA2020 MGA Zone 55  
Scale ratio correct when printed at A4  
1:80,000  
Data sources: WSP, NSWSS, EnergyCo

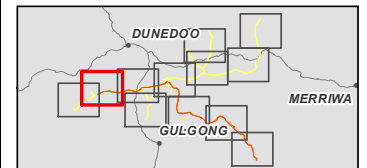
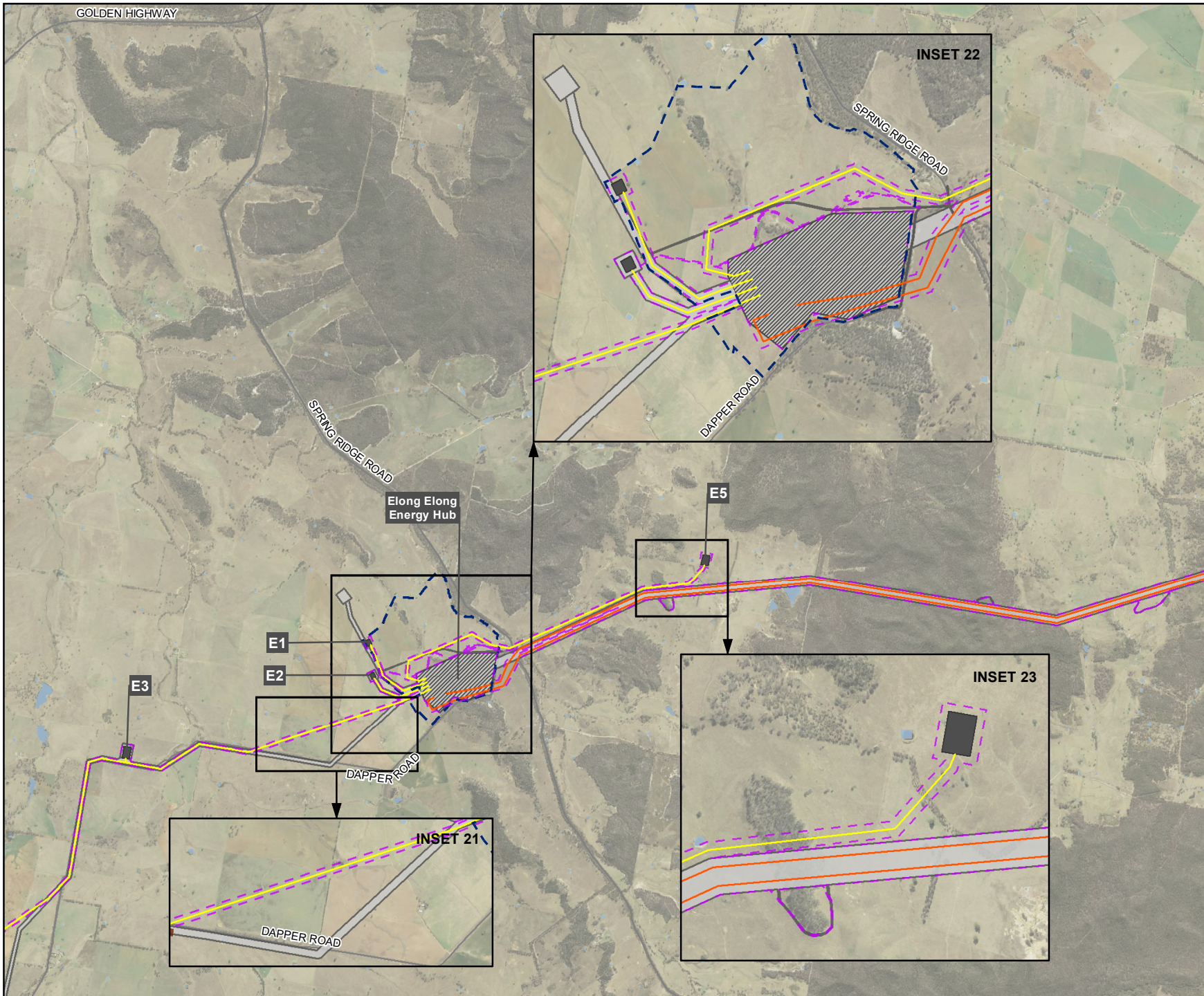


GOLDEN HIGHWAY

Figure C-2  
Project amendments – operational features  
Map 11 of 13

**Legend**

-  Exhibited operation area
  -  Amended operation area
  -  Potential future expansion
  -  Energy hub / 500 kV switching station
  -  330 kV switching station
  -  500 kV transmission line
  -  330 kV transmission line
- Other features**
-  Road
  -  Watercourse
  -  Water body



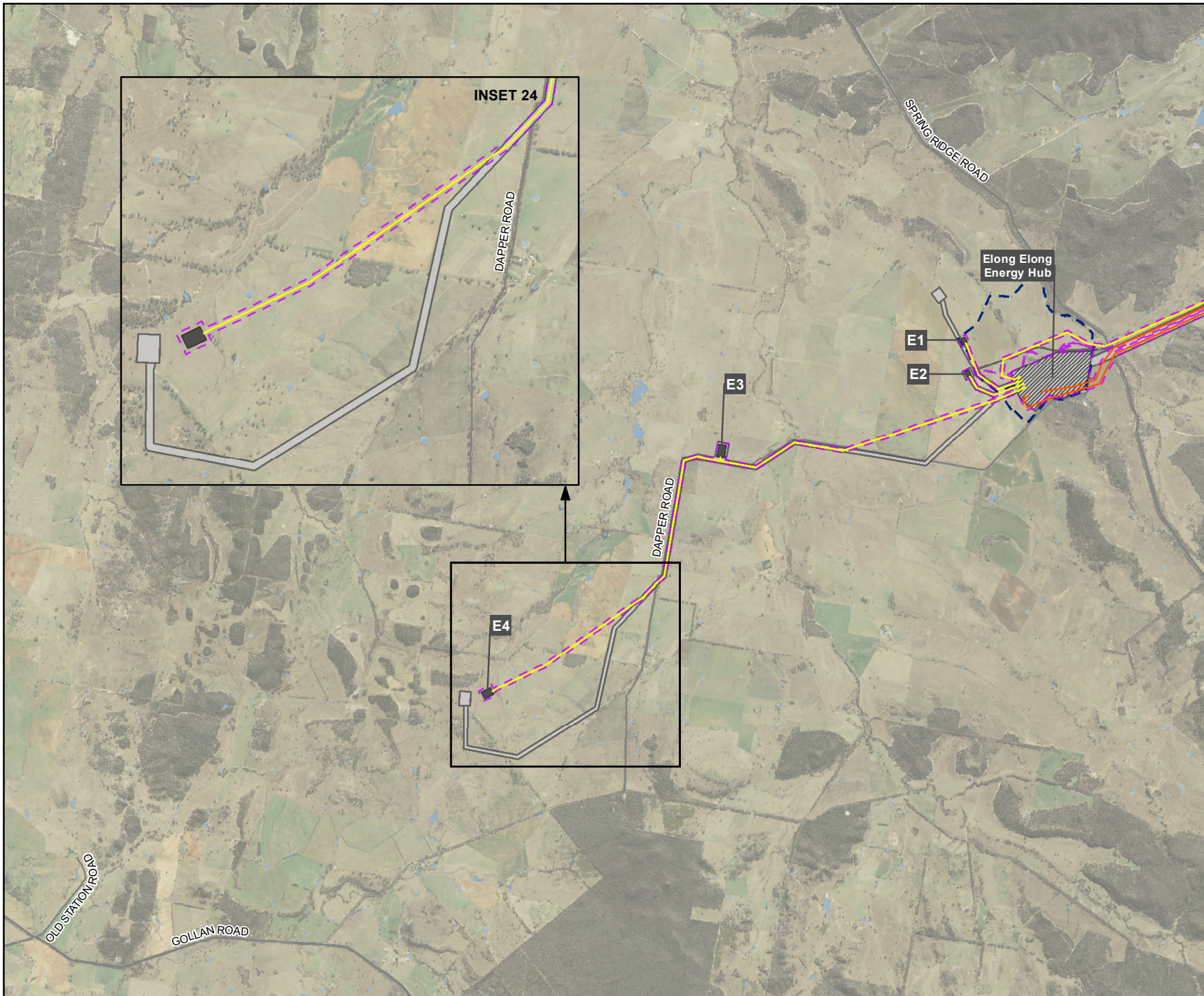
0 1 2 km  
 Coordinate system: GDA2020 MGA Zone 55  
 Scale ratio correct when printed at A4



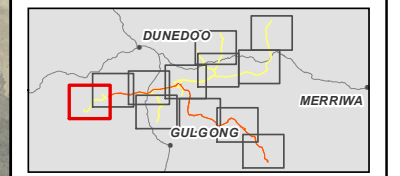
1:80,000  
 Data sources: WSP, NSWSS, EnergyCo




**Figure C-2**  
Project amendments – operational features  
Map 12 of 13



- Legend**
- Exhibited operation area
  - Amended operation area
  - Potential future expansion
  - Energy hub / 500 kV switching station
  - 330 kV switching station
  - 500 kV transmission line
  - 330 kV transmission line
- Other features**
- Road
  - Water body

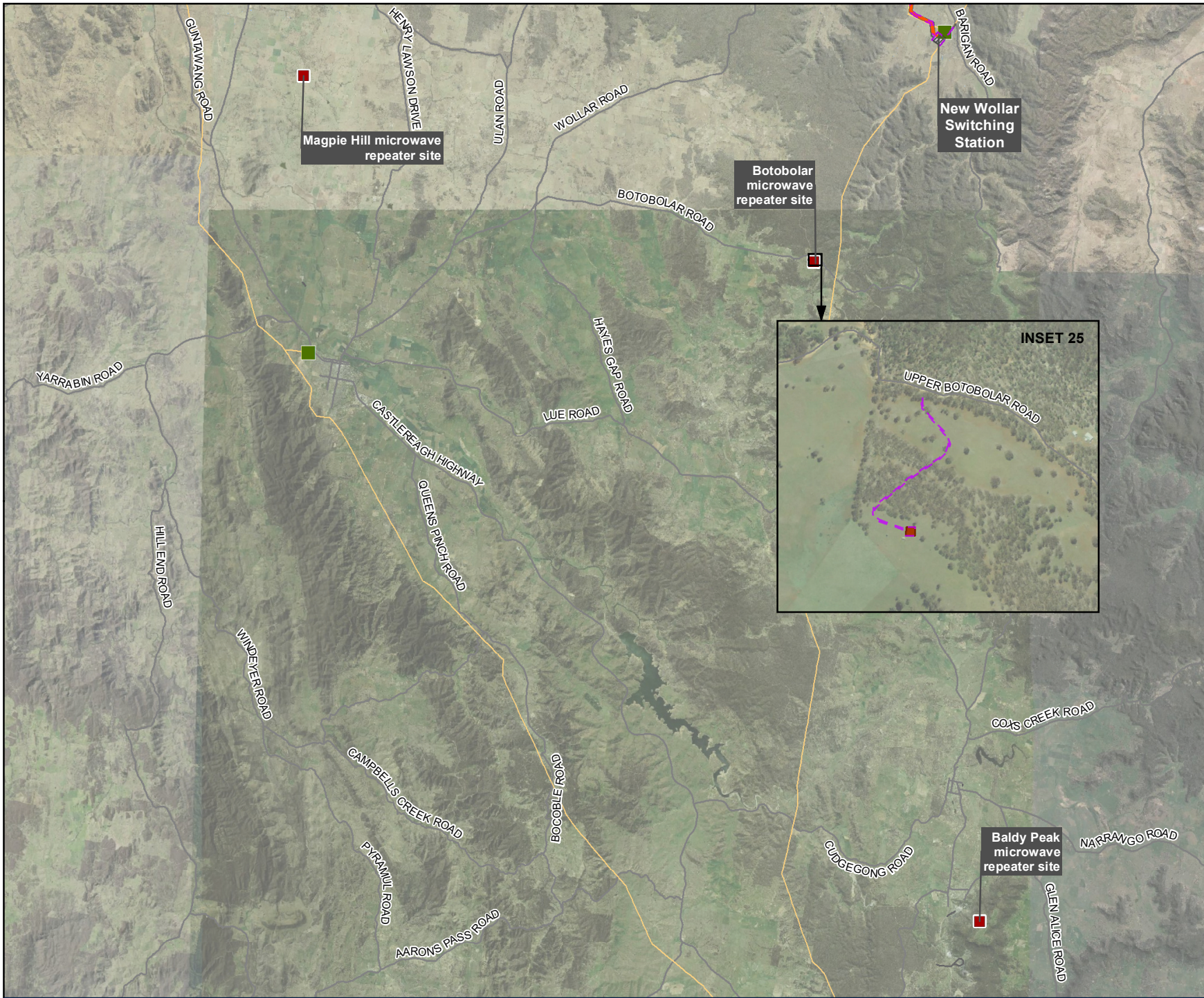


0 1 2 km  
 Coordinate system: GDA2020 MGA Zone 55  
 Scale ratio correct when printed at A4  
 1:80,000  
 Data sources: WSP, NSWSS, EnergyCo

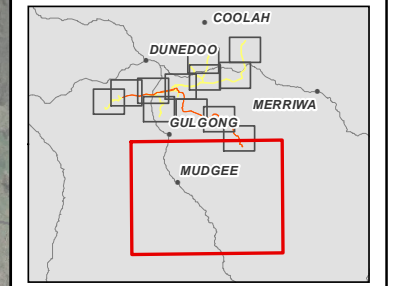




**Figure C-2**  
Project amendments – operational features  
Map 13 of 13



- Legend**
- Exhibited operation area
  - Amended operation area
  - Energy hub / 500 kV switching station
  - Microwaver repeater site
  - 500 kV transmission line
- Other features**
- Existing Transgrid Wollar Substation
  - Existing transmission line
  - Railway
  - Road
  - Water body



Coordinate system: GDA2020 MGA Zone 55  
Scale ratio correct when printed at A4  
1:301,000  
Data sources: WSP, NSWSS, EnergyCo