

Central-West Orana Renewable Energy Zone Transmission project

Amendment Report

Appendix F: Landscape Character and Visual Impact Assessment Addendum

March 2024

www.energyco.nsw.gov.au



Appendix D: Revised private dwelling assessment and photomontages

Existing panoramic view towards the project



Panoramic photomontage - EIS project



Panoramic photomontage - Amended project



Central West Orana Renewable Energy Zone Transmission Project

Dwelling no. 1066

Landscape and visual impact assessment addendum - **APPENDIX D - Private dwelling detailed view assessment**

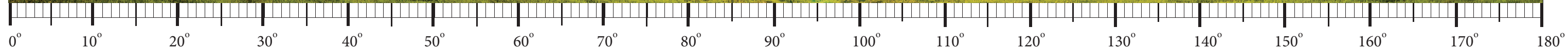
Existing panoramic view towards the project



Project highlighted in silhouette - EIS project



Project highlighted in silhouette - Amended project



50mm focal length



Central West Orana Renewable Energy Zone Transmission Project

Landscape and visual impact assessment addendum - **APPENDIX D - Private dwelling detailed view assessment**

Dwelling no. 1066

Photomontage detail, EIS project

50mm focal length



Central West Orana Renewable Energy Zone Transmission Project

Dwelling no. 1066

Landscape and visual impact assessment addendum - **APPENDIX D - Private dwelling detailed view assessment**

Photomontage detail, Amended project

Existing panoramic view towards the project



Panoramic photomontage - EIS project



Panoramic photomontage - Amended project



Central West Orana Renewable Energy Zone Transmission Project

Dwelling no. 717

Landscape and visual impact assessment addendum - **APPENDIX D - Private dwelling detailed view assessment**

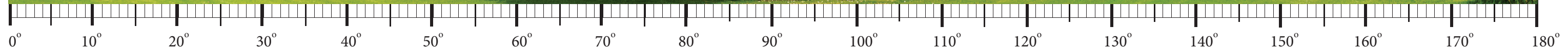
Existing panoramic view towards the project



Project highlighted in silhouette - EIS project



Project highlighted in silhouette - Amended project



Central West Orana Renewable Energy Zone Transmission Project

Dwelling no. 717

Landscape and visual impact assessment addendum - APPENDIX D - Private dwelling detailed view assessment

50mm focal length



0° 5° 10° 15° 20° 25° 30° 35° 40°



Central West Orana Renewable Energy Zone Transmission Project

Landscape and visual impact assessment addendum - **APPENDIX D - Private dwelling detailed view assessment**

Dwelling no. 717

Photomontage detail, EIS project

50mm focal length



Central West Orana Renewable Energy Zone Transmission Project

Dwelling no. 717

Landscape and visual impact assessment addendum - **APPENDIX D - Private dwelling detailed view assessment**

Photomontage detail, Amended project

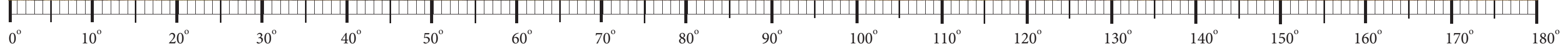
Existing panoramic view towards the project



Panoramic photomontage - EIS project



Panoramic photomontage - Amended project



Central West Orana Renewable Energy Zone Transmission Project

Dwelling no. 539

Landscape and visual impact assessment addendum - **APPENDIX D - Private dwelling detailed view assessment**

Existing panoramic view towards the project



Project highlighted in silhouette - EIS project



Project highlighted in silhouette - Amended project



Central West Orana Renewable Energy Zone Transmission Project

Dwelling no. 539

Landscape and visual impact assessment addendum - **APPENDIX D - Private dwelling detailed view assessment**

50mm focal length



Central West Orana Renewable Energy Zone Transmission Project

Dwelling no. 539

Landscape and visual impact assessment addendum - **APPENDIX D - Private dwelling detailed view assessment**

Photomontage detail, EIS project

50mm focal length



Central West Orana Renewable Energy Zone Transmission Project

Dwelling no. 539

Landscape and visual impact assessment addendum - **APPENDIX D - Private dwelling detailed view assessment**

Photomontage detail, Amended project

50mm focal length



0° 5° 10° 15° 20° 25° 30° 35° 40°



Central West Orana Renewable Energy Zone Transmission Project

Landscape and visual impact assessment addendum - **APPENDIX D - Private dwelling detailed view assessment**

Dwelling no. 539

Photomontage detail, EIS project

50mm focal length



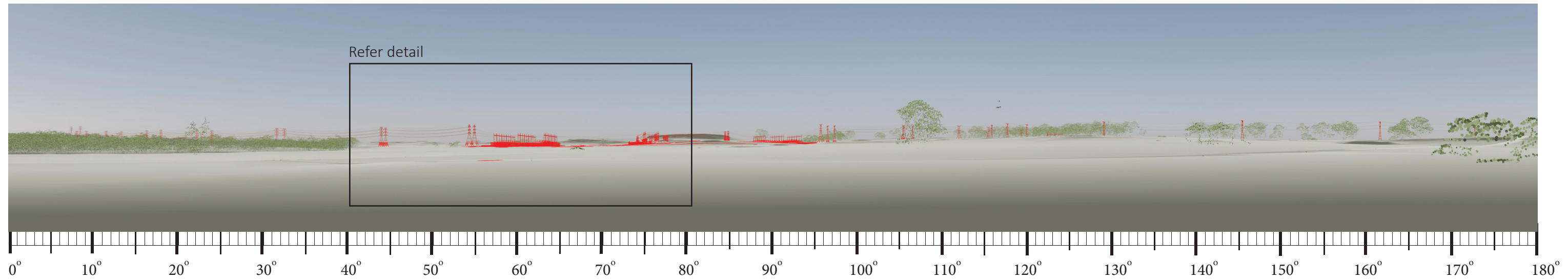
Central West Orana Renewable Energy Zone Transmission Project

Dwelling no. 539

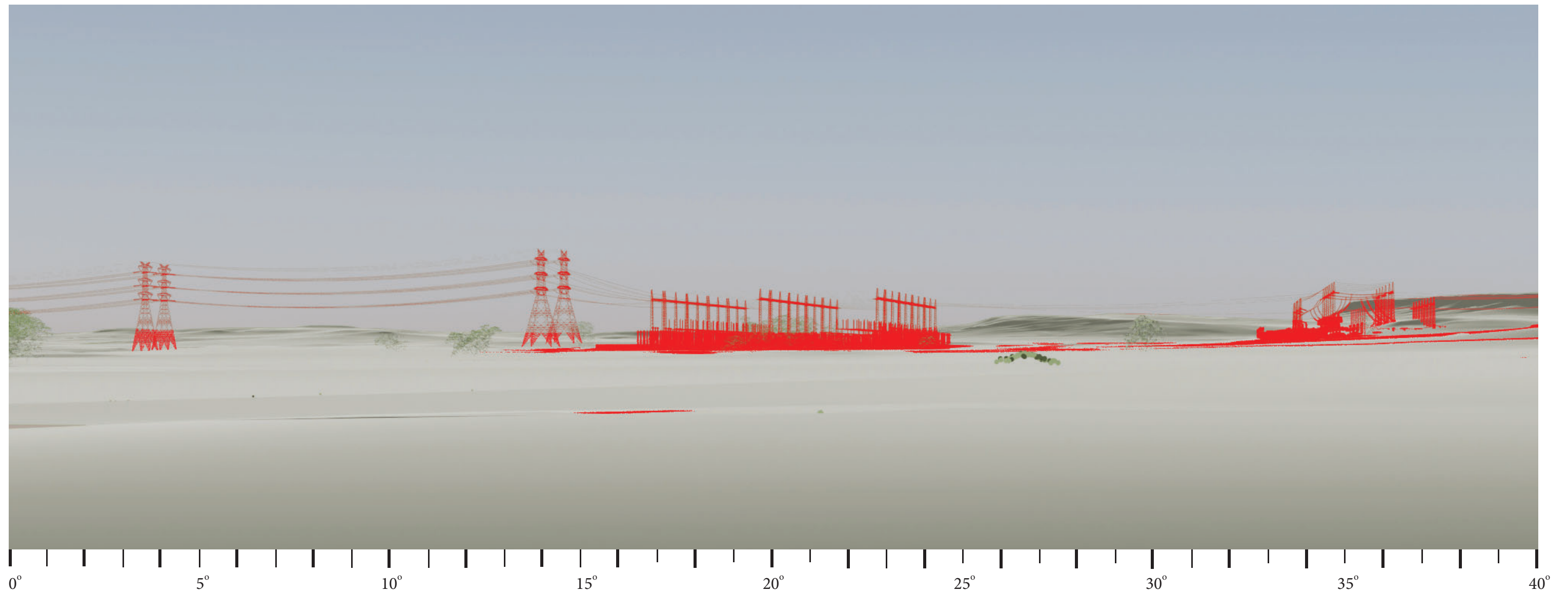
Landscape and visual impact assessment addendum - **APPENDIX D - Private dwelling detailed view assessment**

Photomontage detail, Amended project

3D Modelled view with project highlighted in silhouette - EIS project



Detail (50mm focal length)



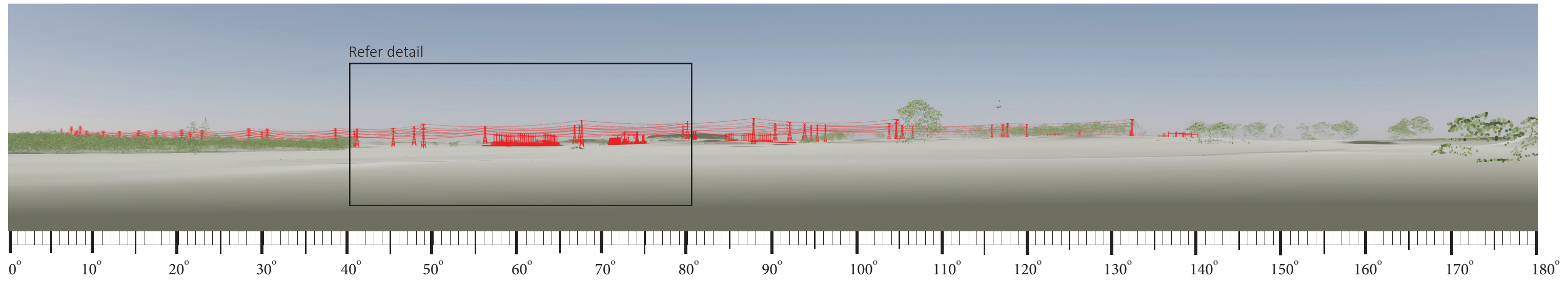
Central West Orana Renewable Energy Zone Transmission Project

Dwelling no. 719

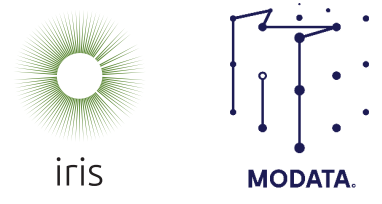
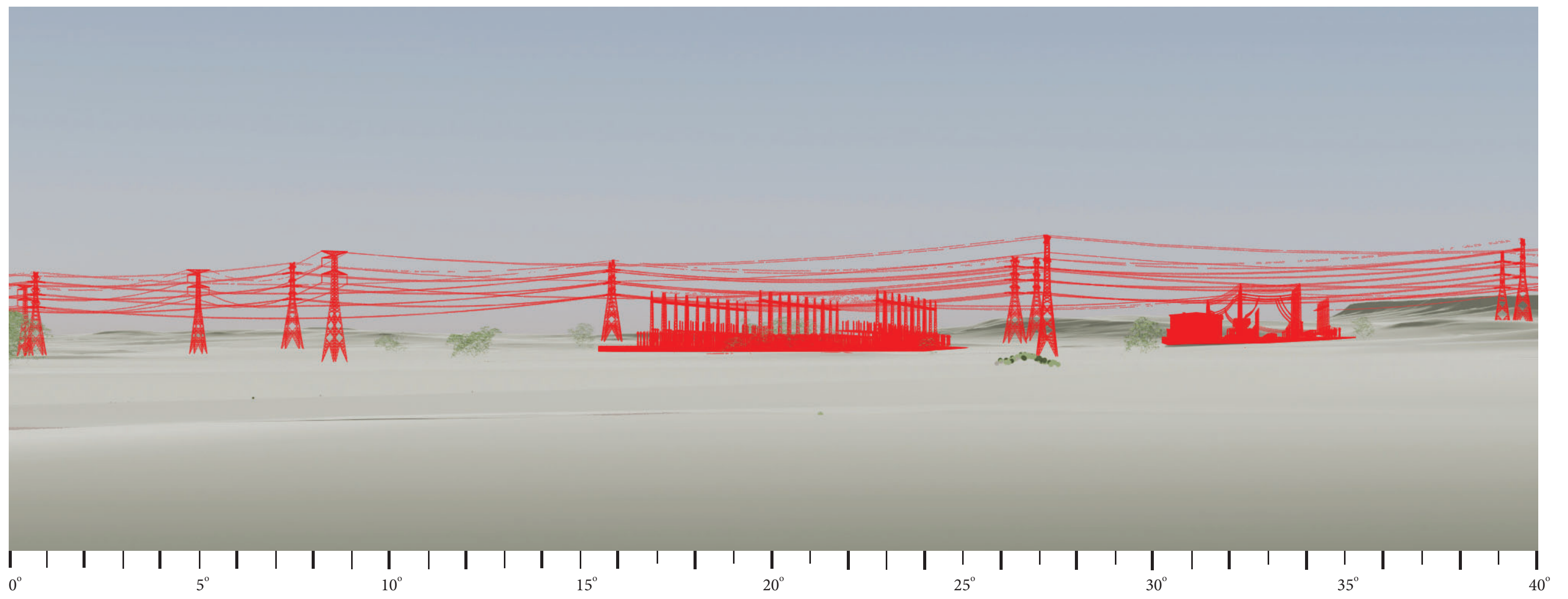
Landscape and visual impact assessment addendum - **APPENDIX D - Private dwelling detailed view assessment**

3D modelled view detail, EIS project

3D Modelled view with project highlighted in silhouette - Amended project



Detail (50mm focal length)



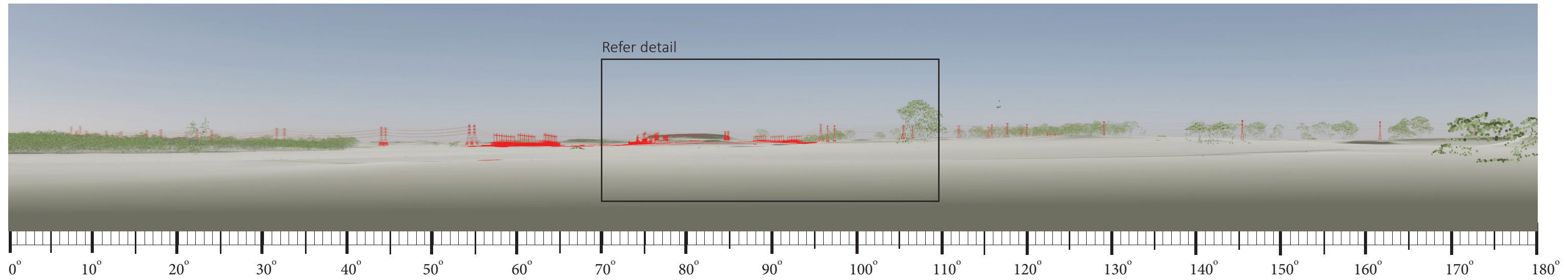
Central West Orana Renewable Energy Zone Transmission Project

Dwelling no. 719

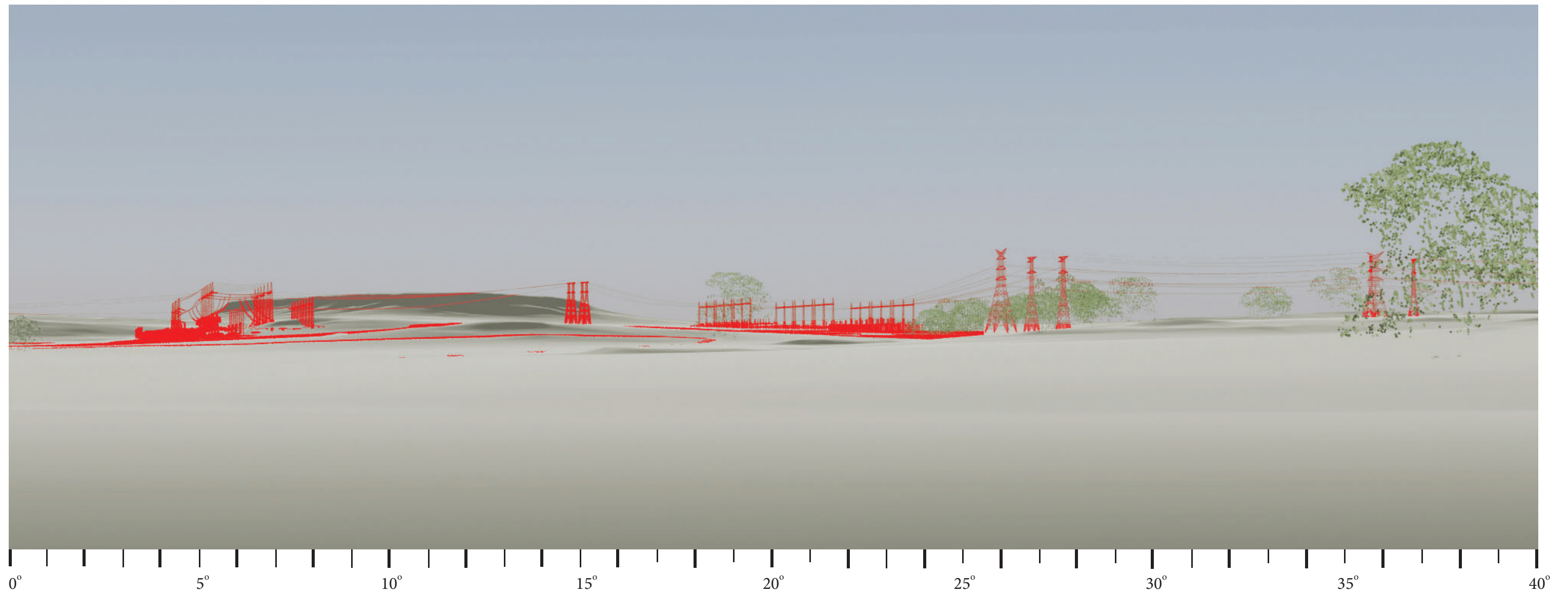
Landscape and visual impact assessment addendum - **APPENDIX D - Private dwelling detailed view assessment**

3D modelled view detail, Amended project

3D Modelled view with project highlighted in silhouette - EIS project



Detail (50mm focal length)



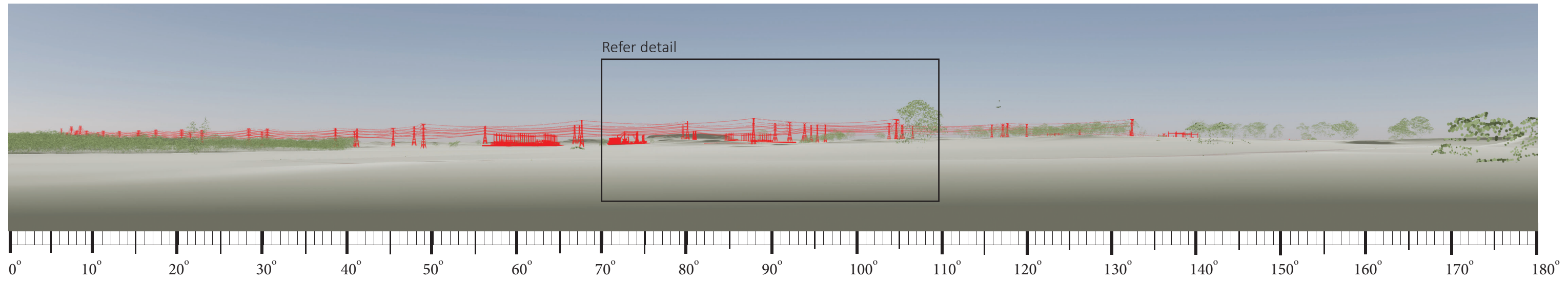
Central West Orana Renewable Energy Zone Transmission Project

Landscape and visual impact assessment addendum - **APPENDIX D - Private dwelling detailed view assessment**

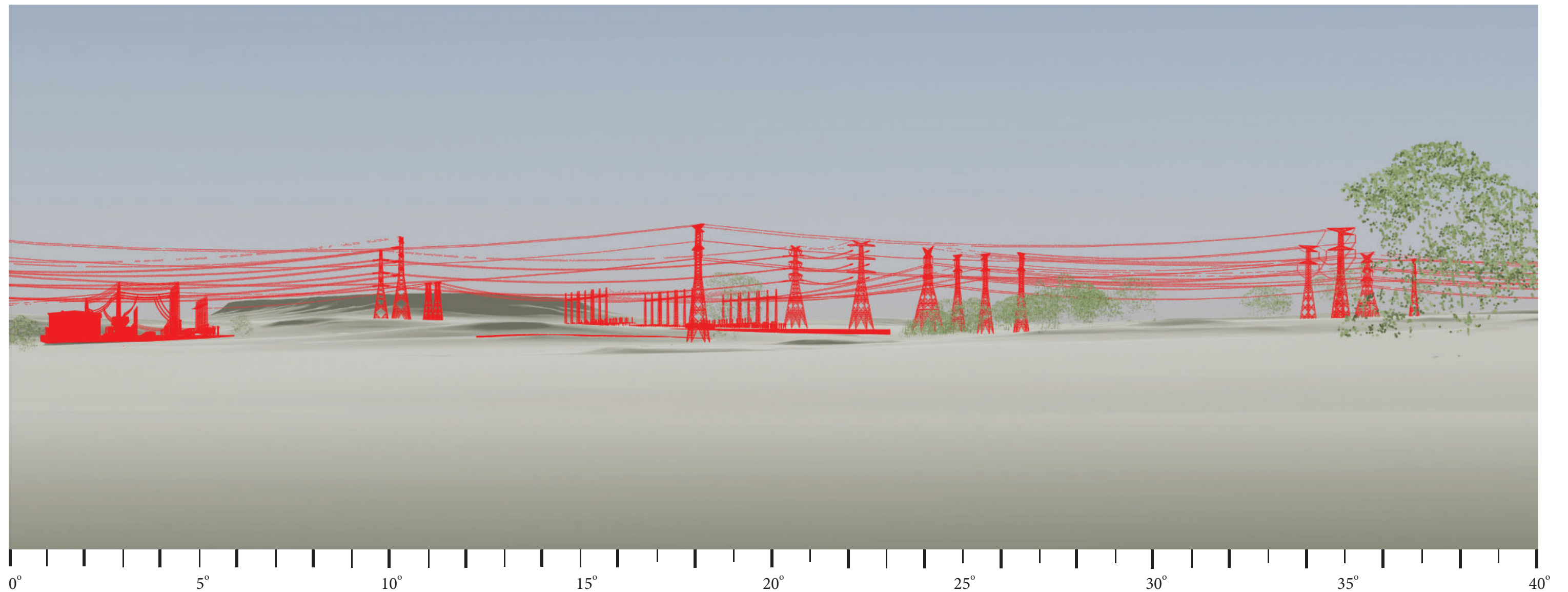
Dwelling no. 719

3D modelled view detail, EIS project

3D Modelled view with project highlighted in silhouette - Amended project



Detail (50mm focal length)



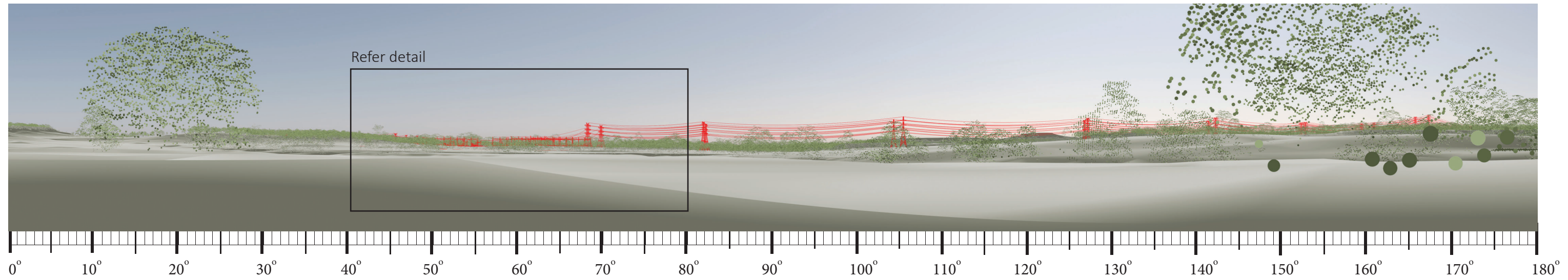
Central West Orana Renewable Energy Zone Transmission Project

Dwelling no. 719

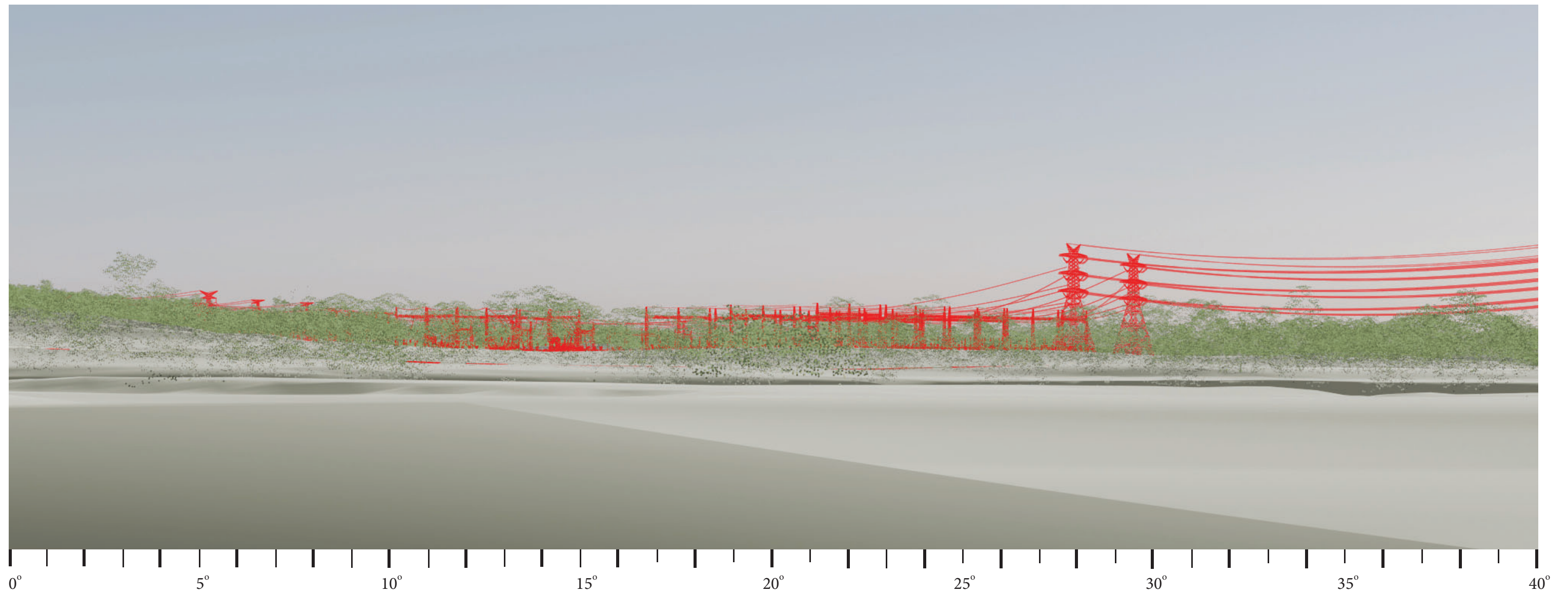
Landscape and visual impact assessment addendum - **APPENDIX D - Private dwelling detailed view assessment**

3D modelled view detail, Amended project

3D Modelled view with project highlighted in silhouette - EIS project



Detail (50mm focal length)



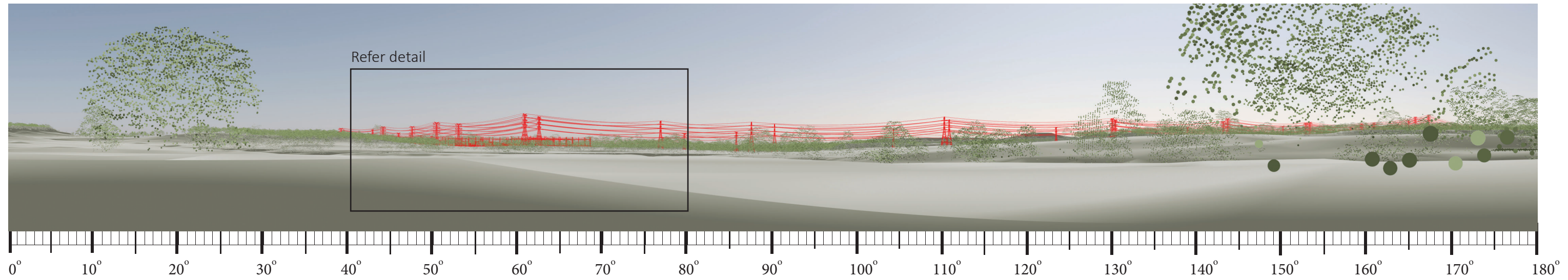
Central West Orana Renewable Energy Zone Transmission Project

Dwelling no. 611

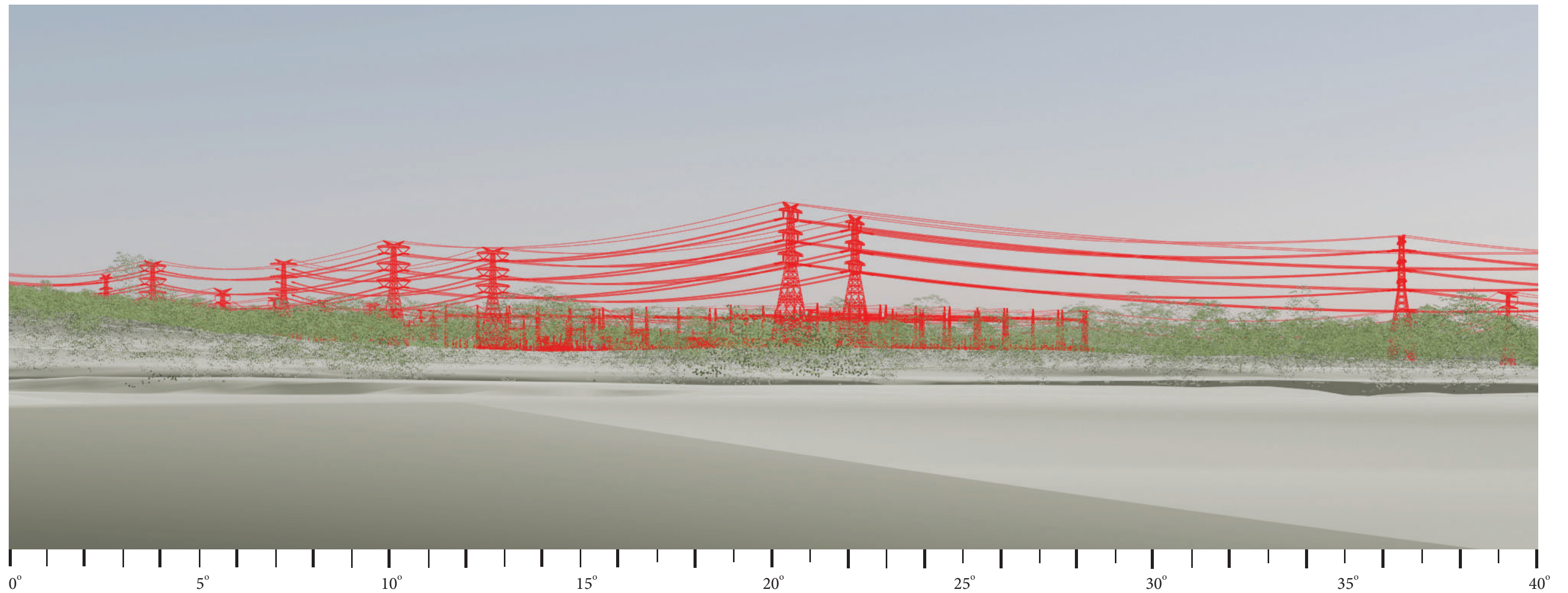
Landscape and visual impact assessment addendum - **APPENDIX D - Private dwelling detailed view assessment**

3D modelled view detail, EIS project

3D Modelled view with project highlighted in silhouette - Amended project



Detail (50mm focal length)



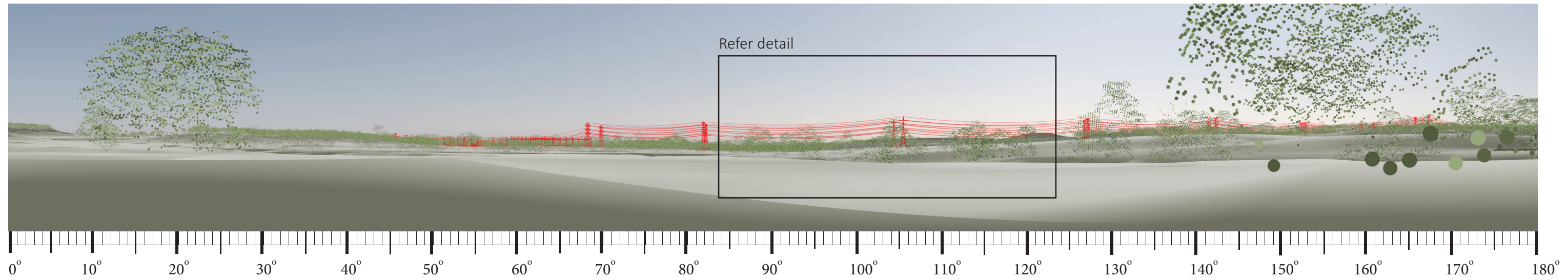
Central West Orana Renewable Energy Zone Transmission Project

Dwelling no. 611

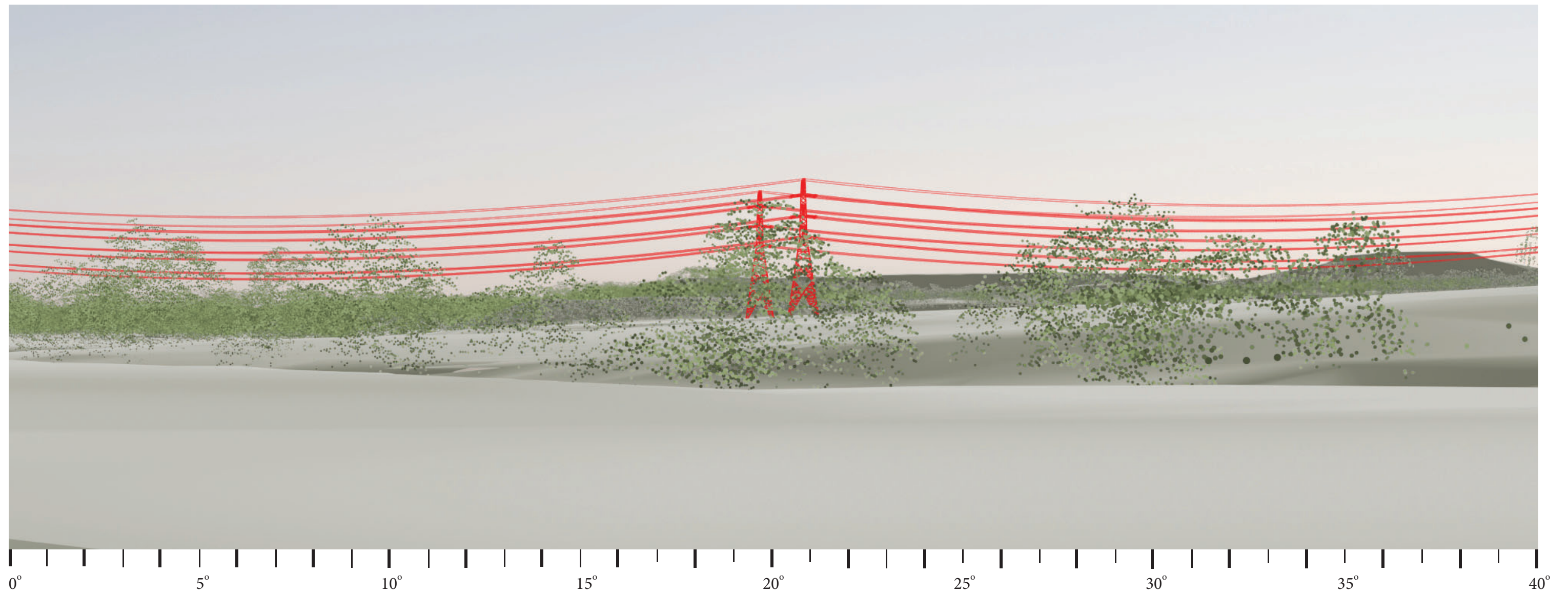
Landscape and visual impact assessment addendum - **APPENDIX D - Private dwelling detailed view assessment**

3D modelled view detail, Amended project

3D Modelled view with project highlighted in silhouette - EIS project



Detail (50mm focal length)



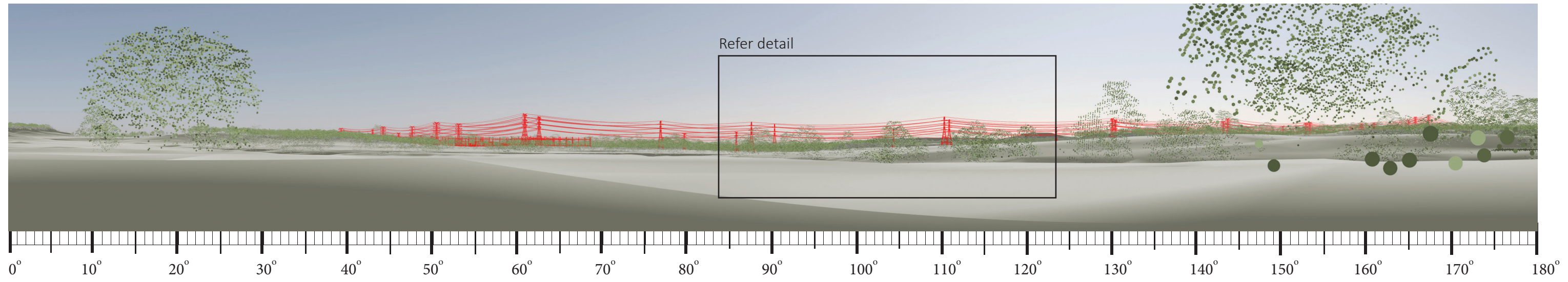
Central West Orana Renewable Energy Zone Transmission Project

Dwelling no. 611

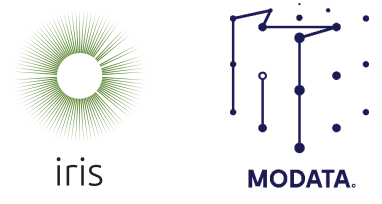
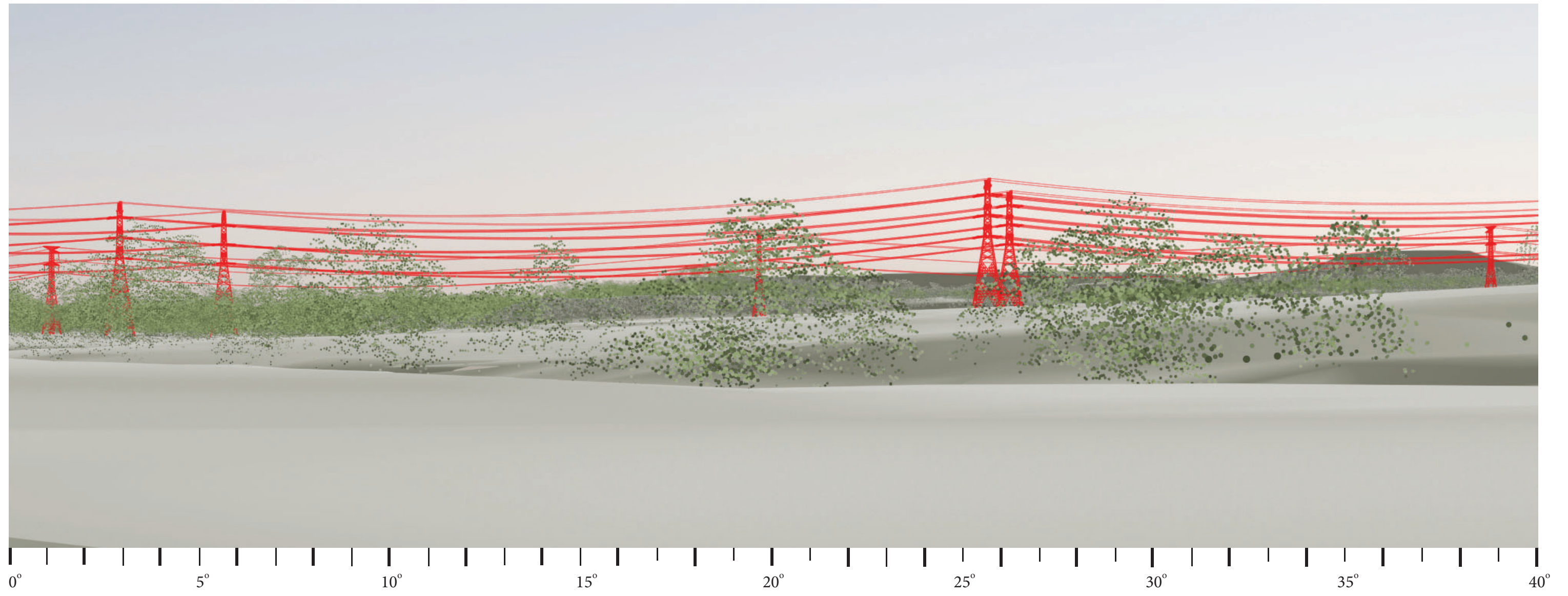
Landscape and visual impact assessment addendum - **APPENDIX D - Private dwelling detailed view assessment**

3D modelled view detail, EIS project

3D Modelled view with project highlighted in silhouette - Amended project



Detail (50mm focal length)



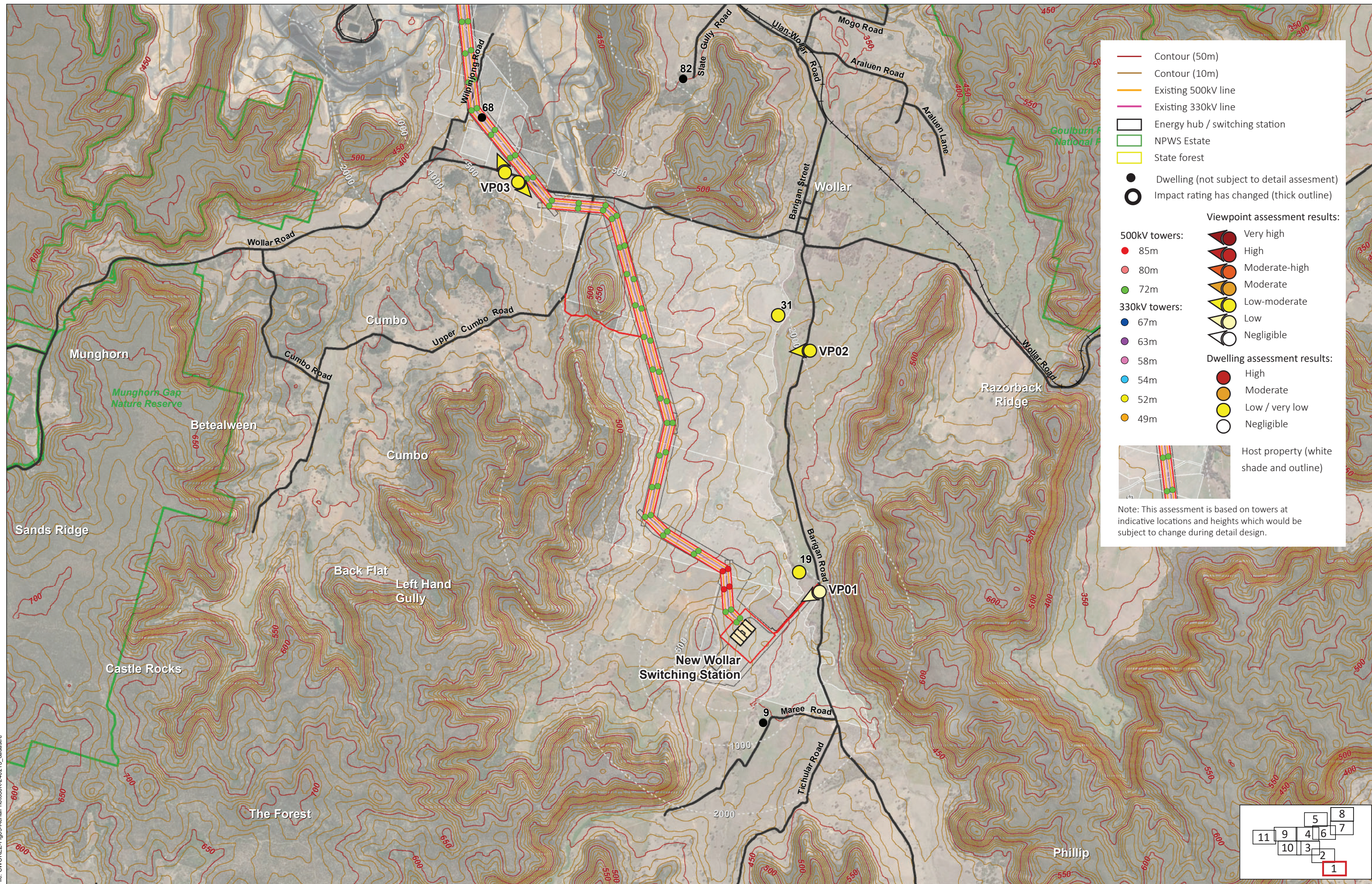
Central West Orana Renewable Energy Zone Transmission Project

Dwelling no. 611

Landscape and visual impact assessment addendum - **APPENDIX D - Private dwelling detailed view assessment**

3D modelled view detail, Amended project

Appendix E: Combined detailed visual assessment results plan

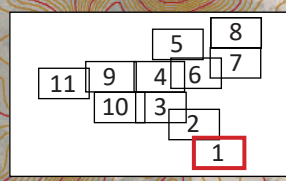


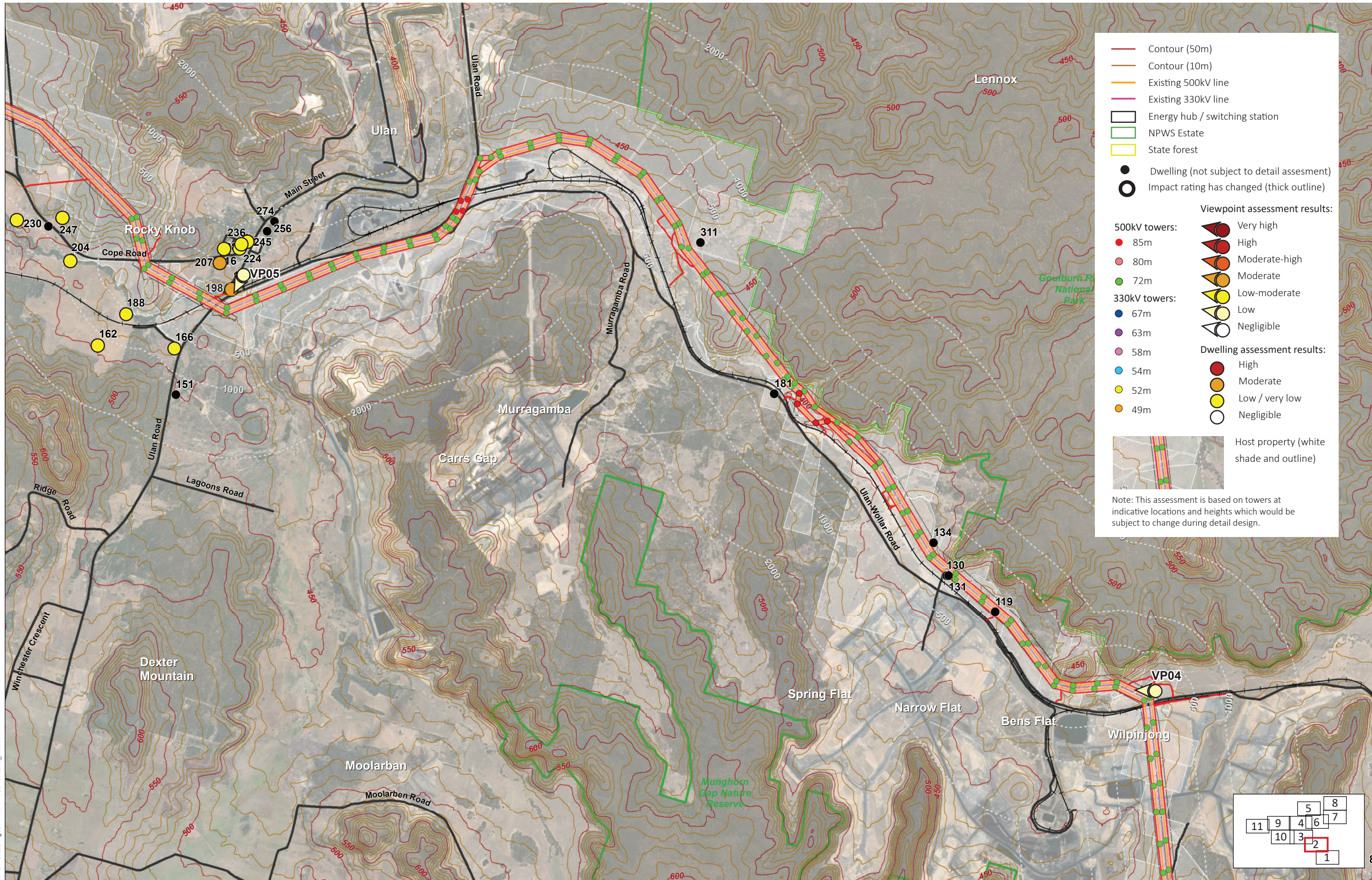
File: CWOREZ-Fig05-AerialPhoto50K-240213_cadastre

Central-West Orana Renewable Energy Zone Transmission Project (Wollar to Wilpinjong)

Appendix E

Landscape and visual impact assessment addendum - Combined detailed visual assessment results plans





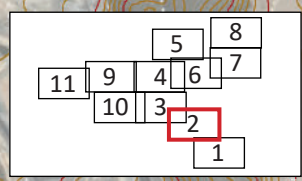
— Contour (50m)
 — Contour (10m)
 — Existing 500kV line
 — Existing 330kV line
 □ Energy hub / switching station
 □ NPWS Estate
 □ State forest
 ● Dwelling (not subject to detail assessment)
 ○ Impact rating has changed (thick outline)

Viewpoint assessment results:
 500kV towers:
 ● 85m: Very high
 ● 80m: High
 ● 72m: Moderate-high
 ● 67m: Moderate
 330kV towers:
 ● 63m: Low-moderate
 ● 58m: Low
 ● 54m: Negligible
 ● 52m: Negligible
 ● 49m: Negligible

Dwelling assessment results:
 ● High
 ● Moderate
 ● Low / very low
 ○ Negligible

□ Host property (white shade and outline)

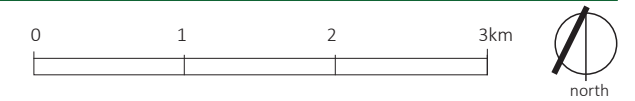
Note: This assessment is based on towers at indicative locations and heights which would be subject to change during detail design.



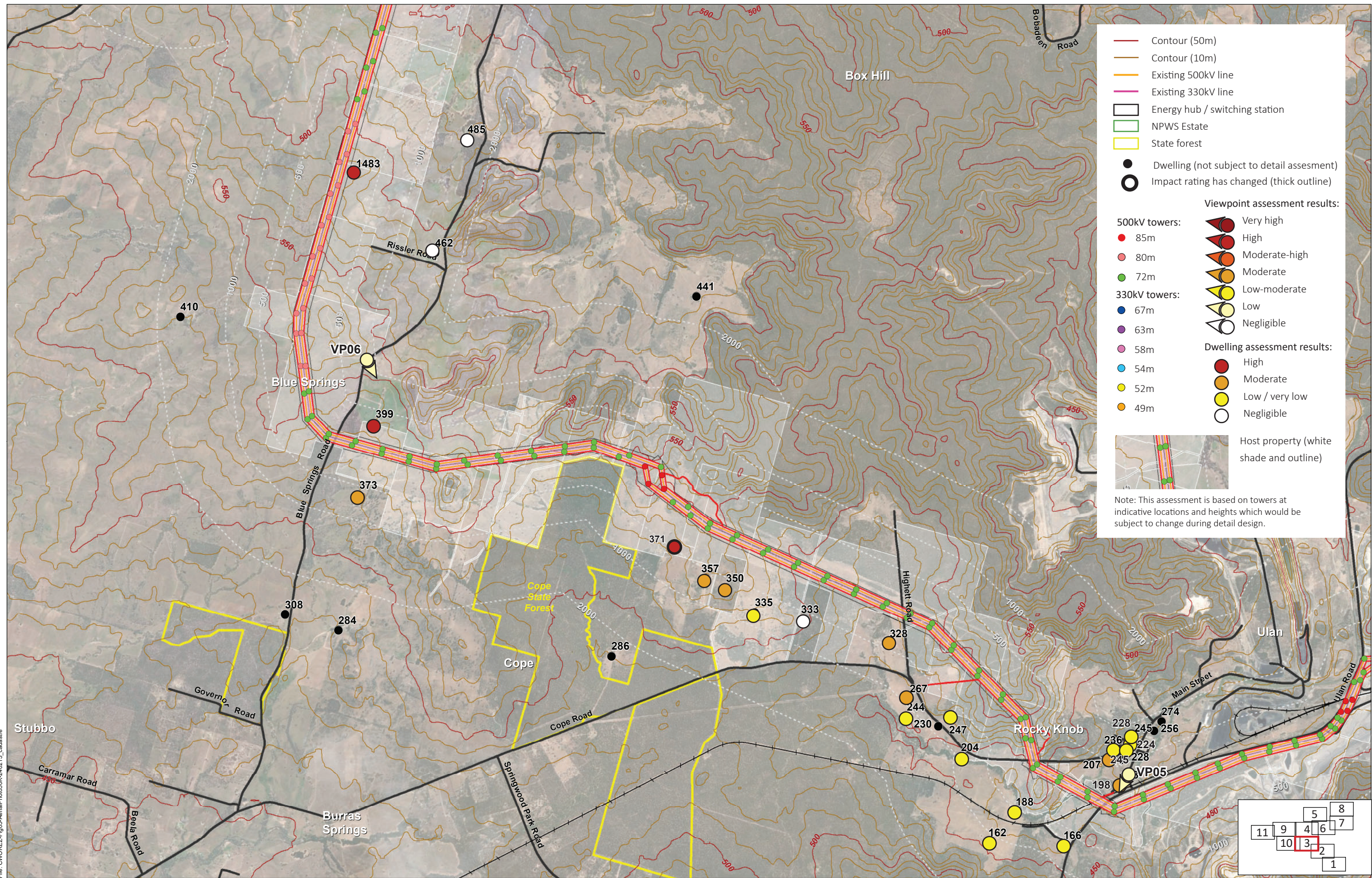
Central-West Orana Renewable Energy Zone Transmission Project (Wilpinjong to Ulan)

Appendix E

Landscape and visual impact assessment addendum - **Combined detailed visual assessment results plans**



file: C:\WOREZ-Fig05-AerialPhoto50K-240213_cadastre

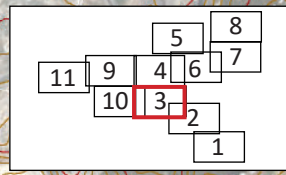


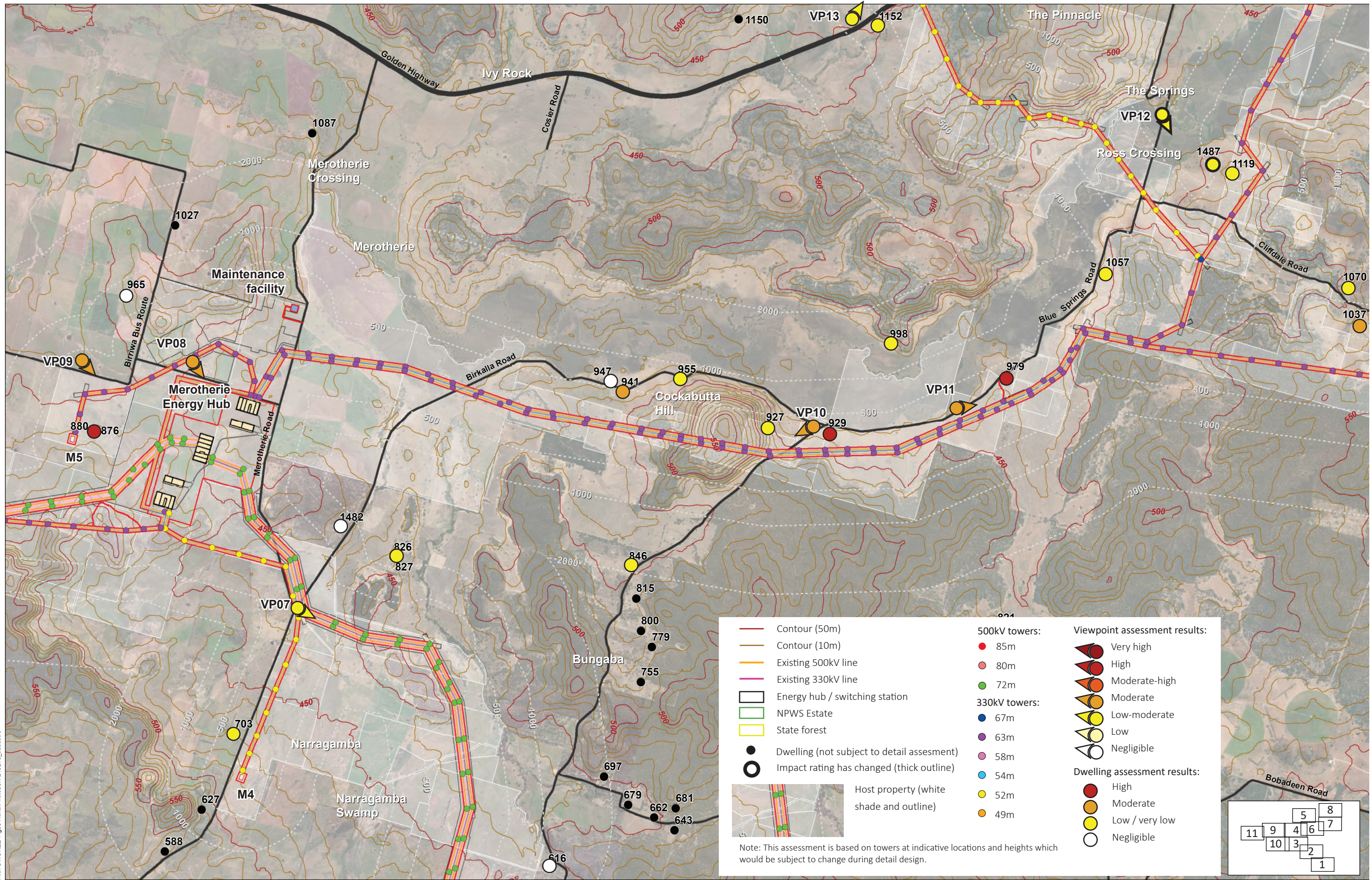
File: C:\WORK\Fig05-AerialPhotos\50K-240213_cadastre

Central-West Orana Renewable Energy Zone Transmission Project (Ulan to Blue Springs)

Landscape and visual impact assessment addendum - Combined detailed visual assessment results plans

Appendix E





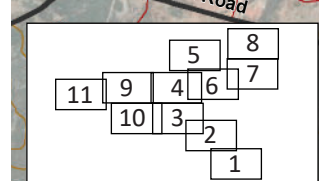
File: CWOREZ-Fig05-AerialPhotos50K-20213_cadastre

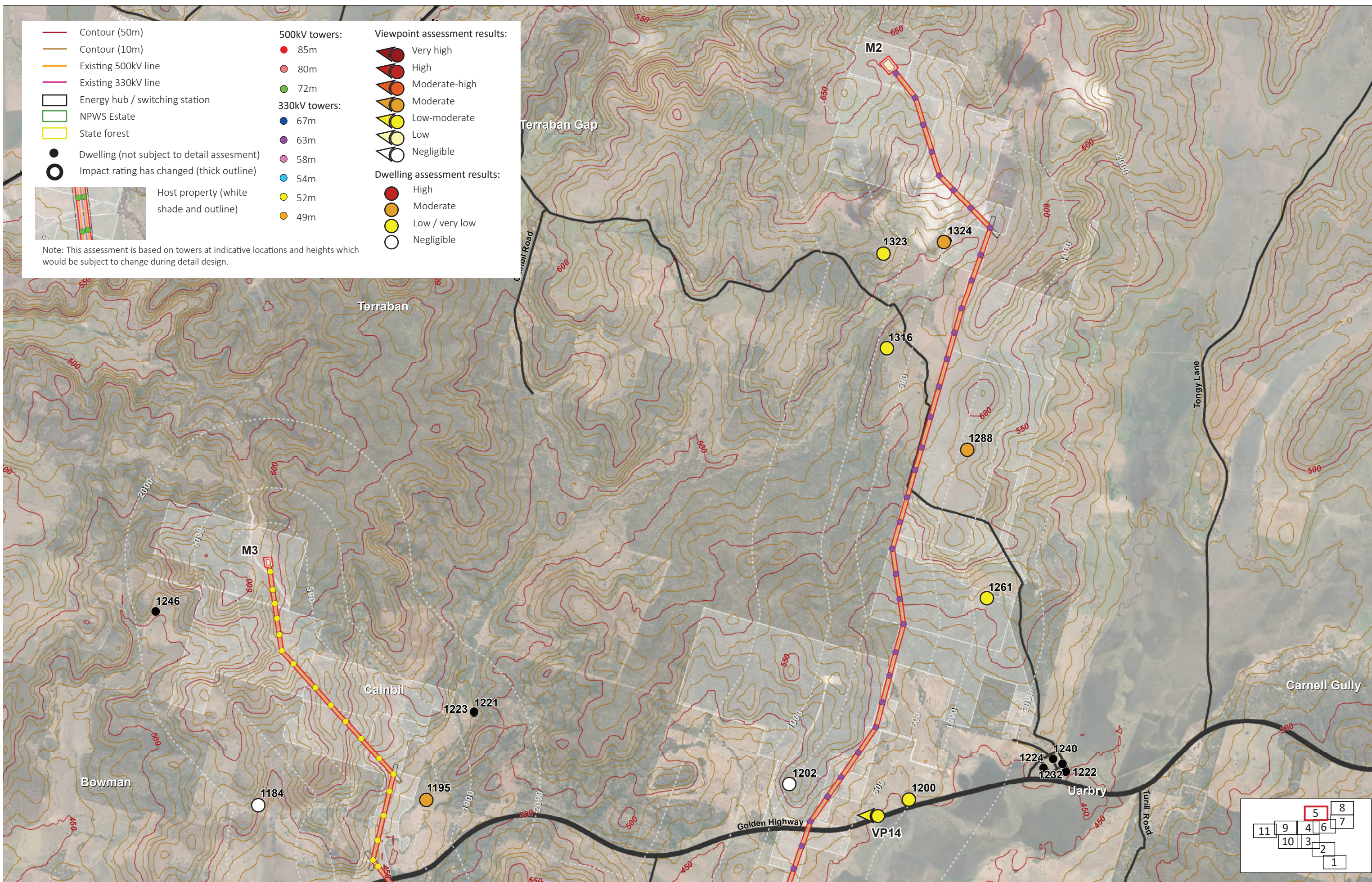


Central-West Orana Renewable Energy Zone Transmission Project (Merotherie to Ross Crossing)

Landscape and visual impact assessment addendum - **Combined detailed visual assessment results plans**

Appendix E

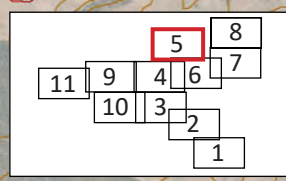


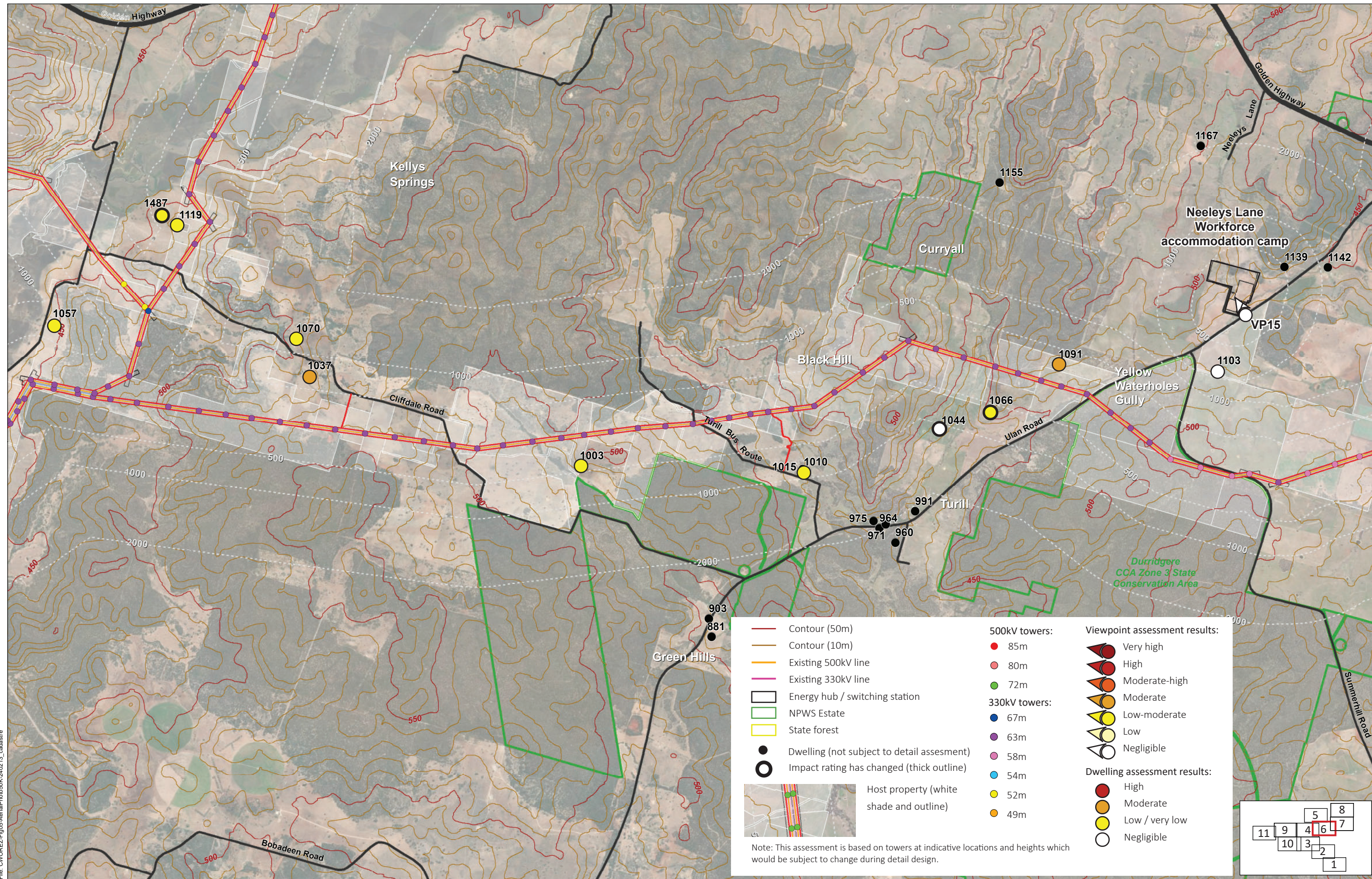


Central-West Orana Renewable Energy Zone Transmission Project (Terraban Gap and Tongy)

Appendix E

Landscape and visual impact assessment addendum - **Combined detailed visual assessment results plans**





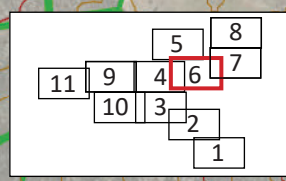
File: CWOREZ-Fig05-AerialPhoto50K-240213_cadastre

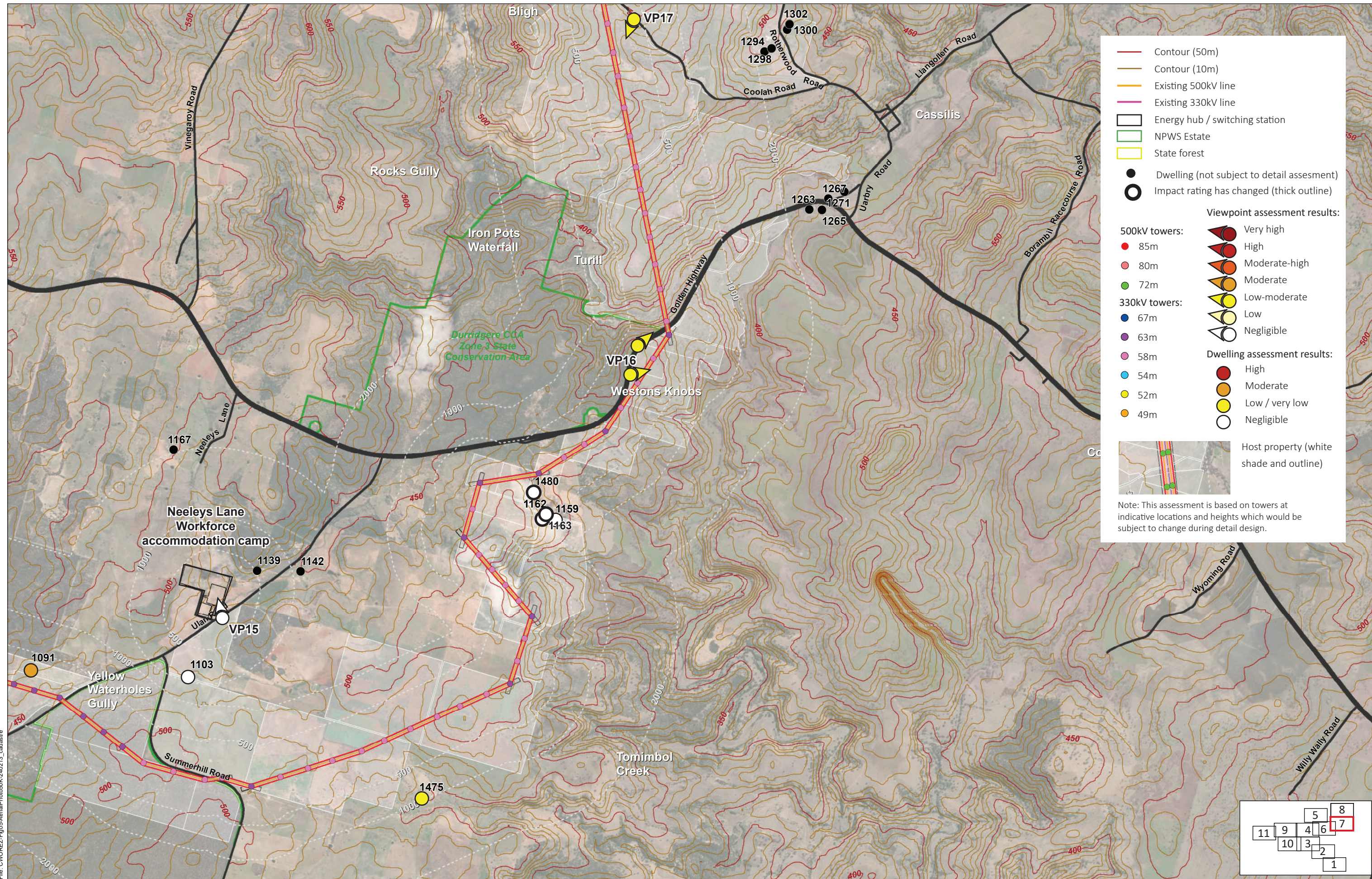


Central-West Orana Renewable Energy Zone Transmission Project (Ross Crossing to Durrigere)

Landscape and visual impact assessment addendum - Combined detailed visual assessment results plans

Appendix E





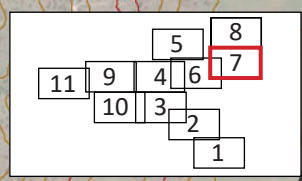
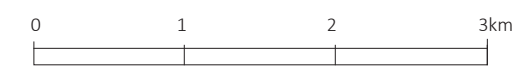
File: CWOREZ-Fig05-AerialPhotos50K-240213_cadastre

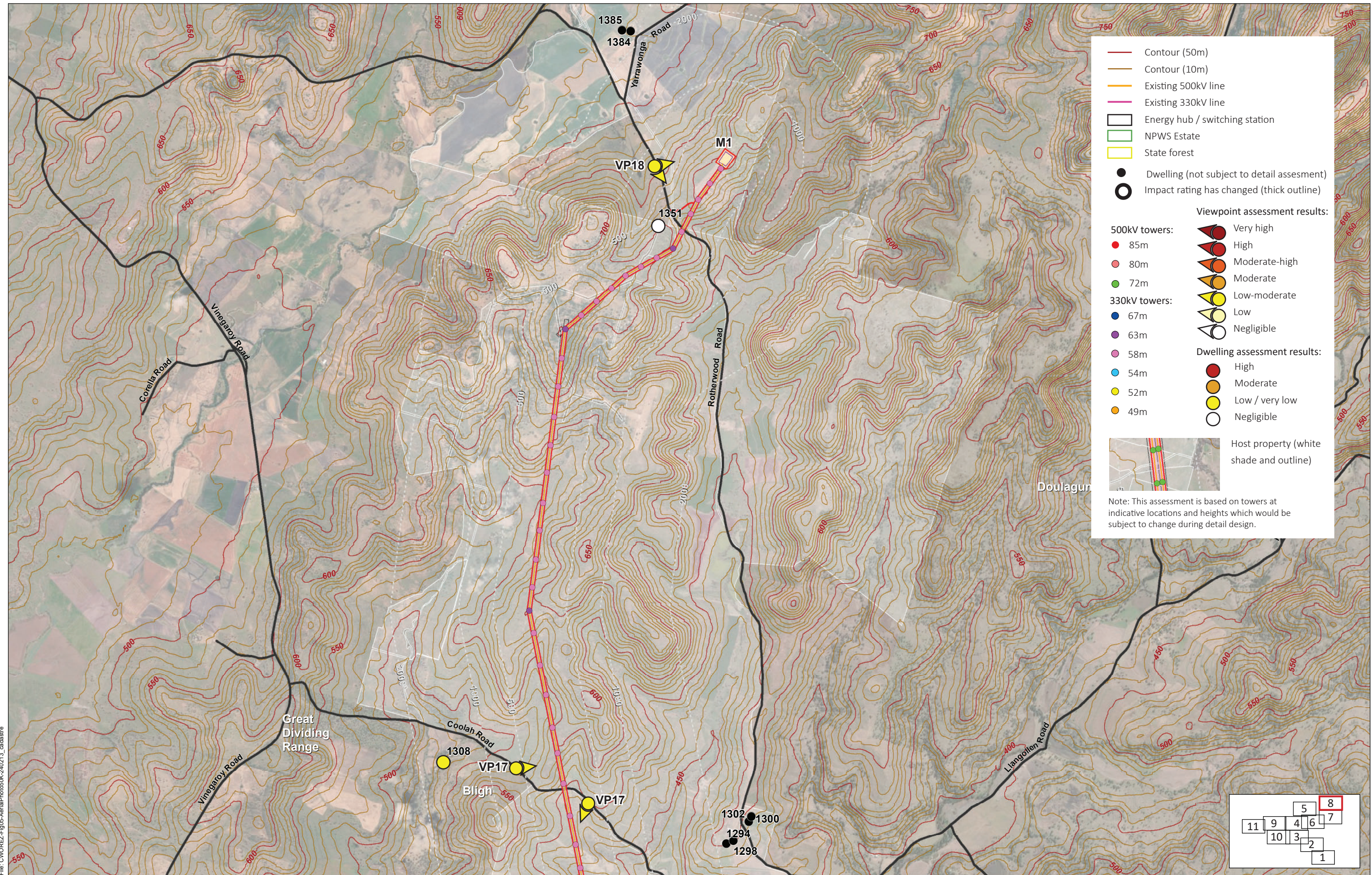


Central-West Orana Renewable Energy Zone Transmission Project (Durridgere to Cassilis)

Landscape and visual impact assessment addendum - Combined detailed visual assessment results plans

Appendix E





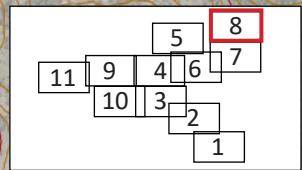
File: CWOREZ-Fig05-AerialPhotos05K-240213_cadastre

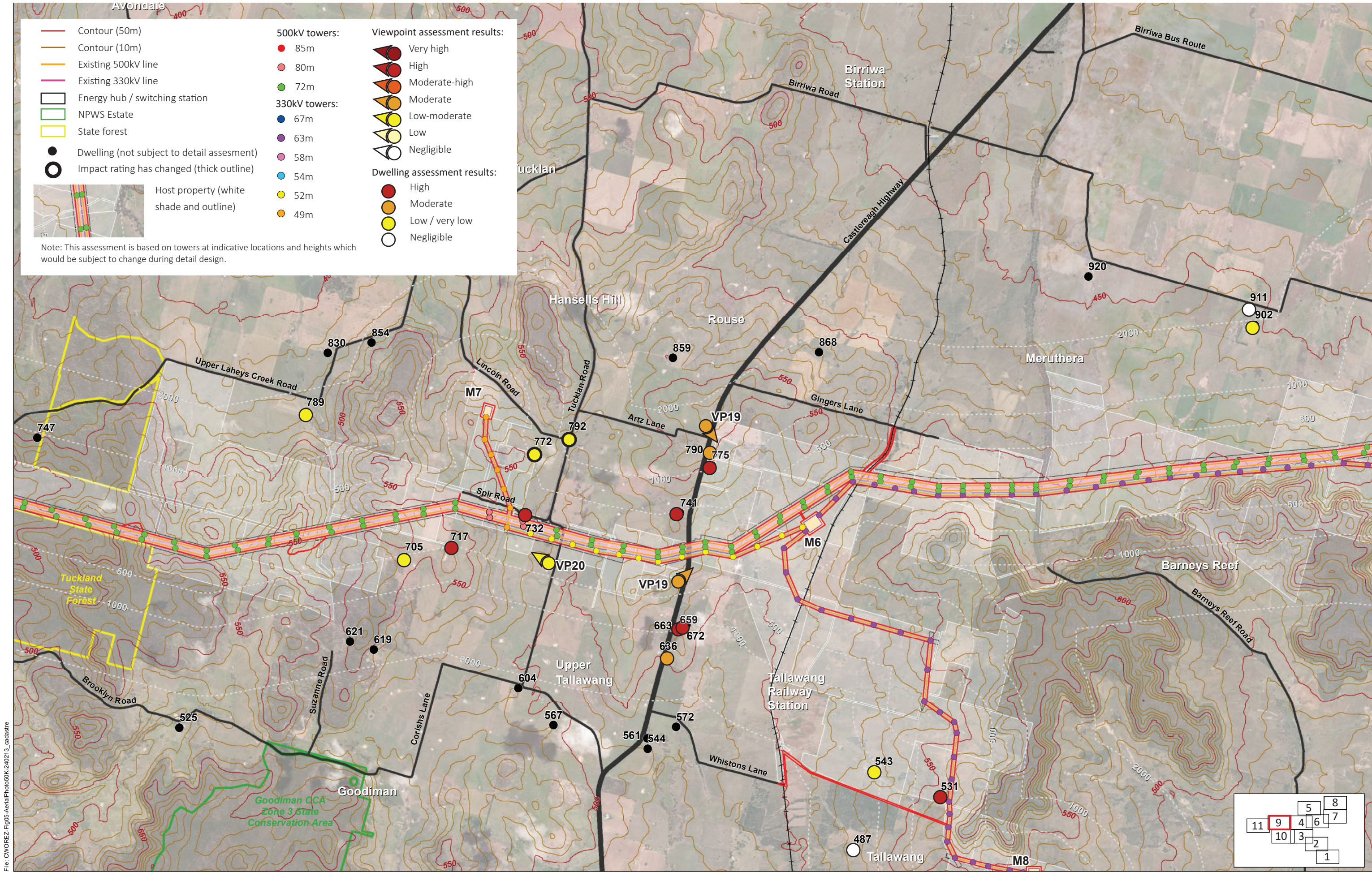


Central-West Orana Renewable Energy Zone Transmission Project (Cassillis to Rotherwood Road)

Landscape and visual impact assessment addendum - Combined detailed visual assessment results plans

Appendix E





File: C:\WORK\Z-Fig05-AerialPhoto50K-240213_cadastre

Central-West Orana Renewable Energy Zone Transmission Project (Merotherie to Tuckland)

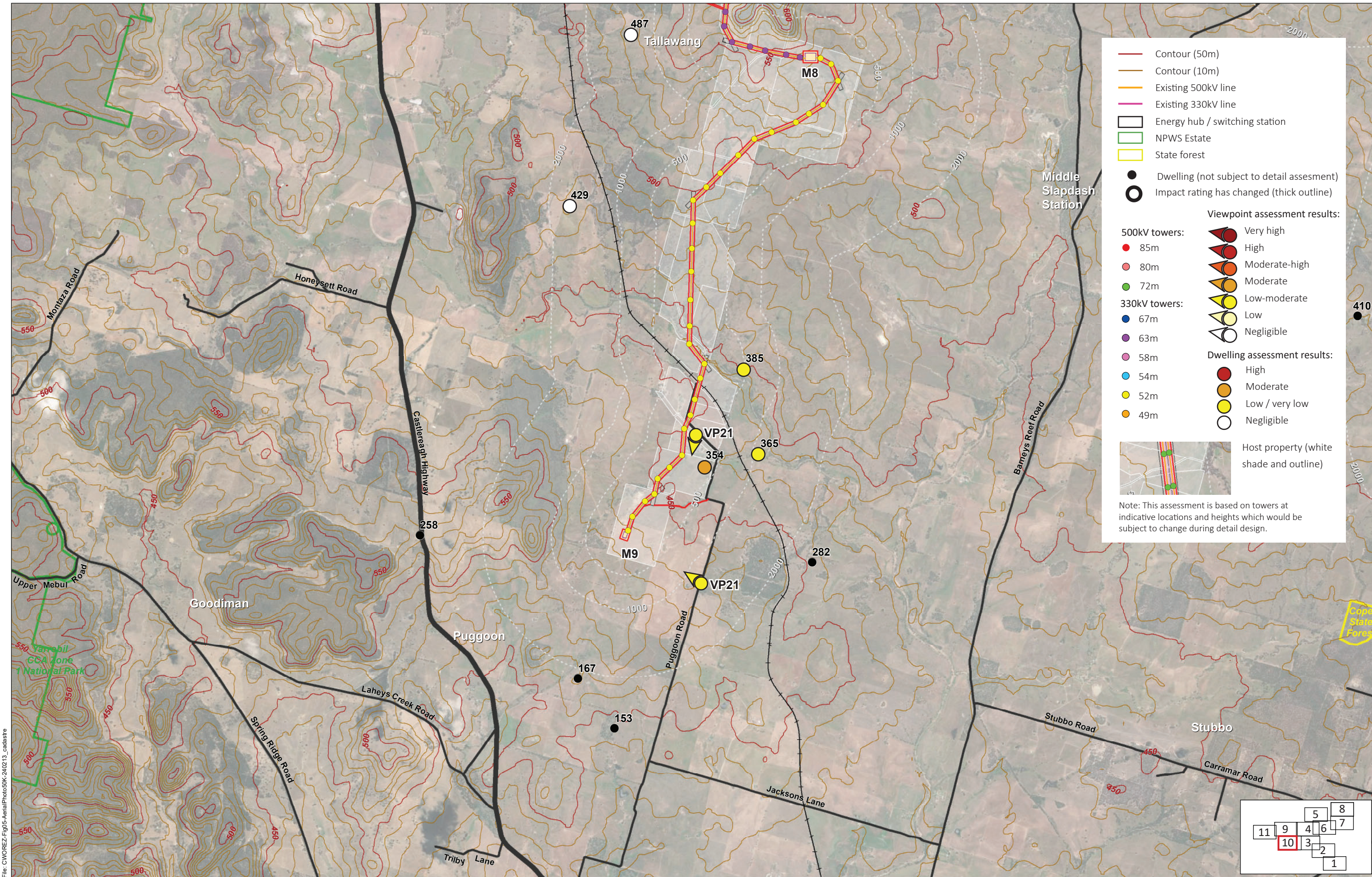
Appendix E

Landscape and visual impact assessment addendum - Combined detailed visual assessment results plans



E-9



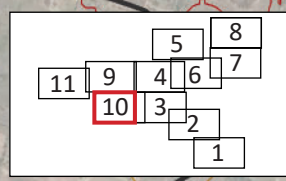


Note: This assessment is based on towers at indicative locations and heights which would be subject to change during detail design.

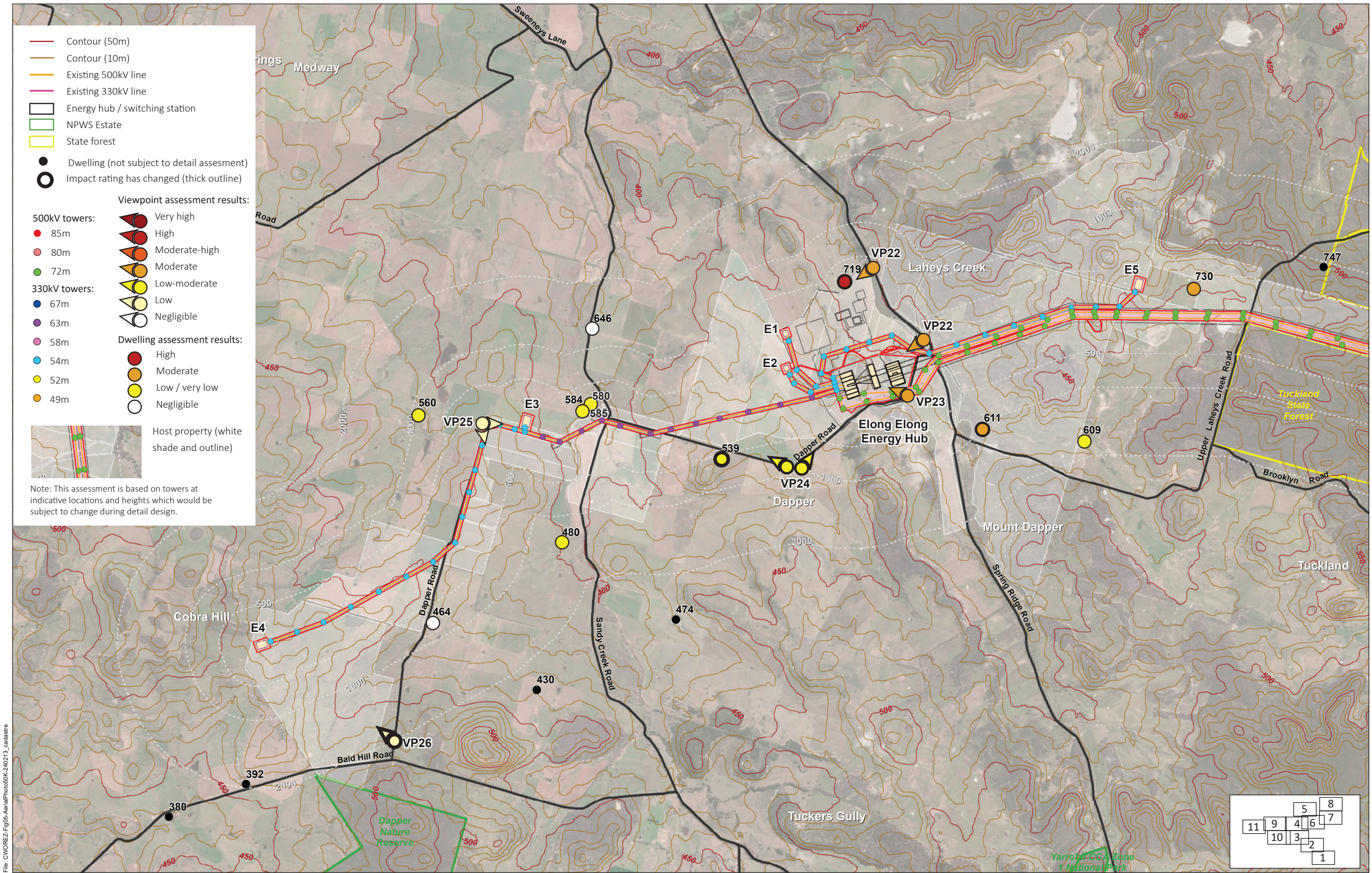
Central-West Orana Renewable Energy Zone Transmission Project (Tallawang to Stubbo)

Appendix E

Landscape and visual impact assessment addendum - Combined detailed visual assessment results plans



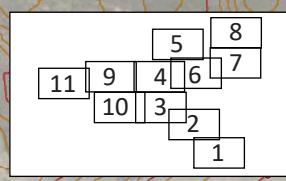
File: C:\WORK\Fig05-AerialPhotos\05K-240213_cadastre



Central-West Orana Renewable Energy Zone Transmission Project (Tuckland to Cobra Hill)

Appendix E

Landscape and visual impact assessment addendum - **Combined detailed visual assessment results plans**



File: CWOREZ-Fig05-AerialPhotos0K-240213_cadastr